

Significant Water Management Issues

Upper Lough Erne Local Management Area Action Plan and Update

December 2013

If you are running a project, or carrying out work that will assist in protecting the water environment, let us know by contacting Eileen Mallon Catchment Management Officer for the Upper Lough Erne LMA eileen.mallon@doeni.gov.uk or 028 92633442.

If you become aware of a water pollution incident, please call the Water Pollution Freephone Hotline in confidence with the location of the pollution incident and the nature of the pollution.

UPPER LOUGH ERNE LOCAL MANAGEMENT AREA PLAN

LMA Action	Progress Update
Organise two CSG meetings per year to provide an open forum for discussion on water issues and encourage involvement in developing and implementing the Local Management Area Plan	<p>CSG Meetings have been held on the following dates: 7 Nov & 30 May 2013 24 Oct & 24 May 2012 11 Oct & 1 June 2011 16 Nov & 8 June 2010 18 Nov & 13 May 2009 1 Oct 2008 19 Feb 2008</p> <p>Presentations and notes of meetings can be found at http://www.ni-environment.gov.uk/water-home/wfd/public_partic_3/catchment_stakeholder_groups/erne_and_melvin.htm.htm</p>
Work with and support local Stakeholders in raising awareness of environmental issues and projects. Seek to identify solutions to water management problems and develop and promote the LMA Action Plan.	<p>Implementation meetings were held with stakeholders to identify water management problems and develop and promote the Action Plan.</p> <p>Stakeholders to provide ongoing input on new actions to update the Upper Lough Erne LMA Action Plan</p> <p>'Householder Awareness - Improving water quality in your local area' leaflet has been developed jointly with Loughs Agency and NIW. Leaflet aim to raise awareness amongst householders on household issues e.g. septic tank maintenance & pesticide use.</p> <p>Leaflets have been distribution in the LMA</p>
Promote and encourage local projects through WATER Environment Community awards	<p>Awards were promoted through CSG meetings, NIEA website and e-mail.</p> <p>The winning entries received £1000 for their environmental improvement projects</p> <p>The 2010 winner for the Erne & Melvin CSG was The Share Holiday Village, Lisnaskea . A presentation was held in Stormont on the 26th May 2011 for the winners.</p>
Highlight funding opportunities for water management projects to local partners	<p>In 2012 Enniskillen anglers were awarded a NIEA Water Quality Improvement Grant. The Club completed a river restoration on 'Earls River', a tributary on the western shore of Lower Lough Erne. The project involved reducing shading, addition of gravel and boulders, fencing and restocking.</p> <p>NIEA will continue to encourage & support future applications to the NIEA Water Quality Improvement Grant through CSG meetings, NIEA website and e-mail.</p>

	For further information see: http://www.doeni.gov.uk/niea/water_quality_improvement_grant
Promote NIEA Water Pollution Hotline through advertising, promotion and waterside signage	The official launch of the LMA pollution hotline signage project took place on 18 th April 2011 with NIEA Chief Executive John McMillan. 13 signs have been located throughout the Upper Lough Erne LMA. The pollution hotline number is promoted frequently by NIEA events, publications and relevant websites
Support pollution prevention campaigns such as NIW's Bag it and Bin it Campaign, Local river clean ups etc.	NIEA support relevant water quality enhancing campaigns by distributing promotional material. NIEA have provided support to local river clean ups in a number of rivers across the province.
Develop leaflets and articles to promote effective farm nutrient and waste management	'Water Quality Plans in Action' article published in Farming Life. A DARD and NIEA poster featuring local farmer contribution to improving water quality within LMA's has been produced and is displayed in relevant venues
Raise awareness and promote the benefits of effective farm nutrient and waste management	All applicants to DARD agri-environment schemes receive a farm waste management advisory visit as part of their application to the scheme. DARD have produced a Code of Good Agricultural Practice which contains practical management advice on how farm wastes such as silage effluent, slurry and manure can be collected, stored and spread with minimum risk to the environment. DARD have developed an agri-environment training course for farmers dealing with farm wastes and nutrient management planning. 'Landowner Awareness - Improving water quality in your local area' leaflet developed jointly with Loughs Agency, UFU, DARD to raise awareness amongst landowners. Leaflets have been distribution in the LMA NIEA delivered a Water Framework Directive awareness talk to CAFRE students.
Complete the phosphorus nutrient budget work for Northern Ireland	Nutrient budgets are being analysed alongside SIMCAT (SIMulation of the water quality of CATchments) models developed to represent the behaviour of flow and pollutants in rivers. This will inform actions to address diffuse and point source nutrient inputs to the water environment.
Conduct LMA investigative surveys to assess benthic invertebrates	Water Management Unit (WMU) freshwater team sampled additional sites on the Colebrooke River system as part of an investigative programme for the Upper Lough Erne LMA. Investigations involved site assessments, kick sampling and invertebrate identification. The sampling was conducted during the summer of 2011. A series of river walks was then conducted to investigate and where possible address the factors contributing to declines in biotic scores.
Create inventory of physical structures in the river channel and apply the UK Fish Passability tool to identify selected obstacles which are causing a barrier to fish migration.	Encourage collecting information relating to obstacles which may affect fish passability in water bodies.
Raise awareness of the impact of misconnections where they have been identified to be causing deterioration in water quality.	NIEA, have produced and distributed leaflets to raise awareness among householders of misconnections. They are available at www.doeni.gov.uk/niea/householder_awareness.pdf

Promote public participation by raising awareness of The Rivers Trust.	NIEA continue to support the establishment and operation of River Trusts in NI including a start up grant, mentoring and advice.
Raise awareness of catchment management via relevant press articles and web publications and providing support at local community events.	NIEA organised a 'Marlbank Open Day' on Friday 15 th June 2012 and local WMU staff provided examples of 'good bugs' and 'bad bugs' to allow those attending to assess water quality using biological monitoring techniques.
Collate existing information on location of aquatic and river bank invasive alien species	<p>Provided advice and support to Lough Erne Invasive Species Group Meetings group meets specifically in relation to the growth of Nuttall's Pondweed in the Erne system.</p> <p>During the course of river walks undertaken by NIEA any sightings or suspected sightings of invasive alien species are collated and reported to Invasive Species Ireland.</p>
Consider site restoration and protection methods to reduce sedimentation and improve habitat for the Freshwater Pearl Mussel.	A benchmarking review has been carried out to identify best practise measures both Nationally and Internationally.
Carry out Rapid Hydro morphology Assessment Technique (RHAT) on one water body within the Upper Lough Erne LMA.	River enhancement project carried out on the Tempo River by DCAL (Inland Fisheries) & Rivers Agency. A RHAT survey was completed by NIEA on the Temp River at Tempo village.
Conduct a water resource assessment to inform review of abstraction licenses for the Upper Lough Erne LMA.	The water resource assessment has been completed by NIEA and is being used to inform abstraction issues.
Targeted education, advice and regulatory action to prevent pollution and protect the water environment	As an integral part of the Upper Lough Erne river walks completed by NIEA any domestic, agricultural, commercial or industrial premises that were suspected of impacting on water quality received targeted advice or regulatory action as appropriate.
Investigate Dissolved Oxygen suppressions	The Colebrooke River Fivemiletown has issues with low Dissolved Oxygen (DO) levels on occasion. Local Regional Operational staff regularly check the DO levels at a number of sites within the waterbody and carryout investigations when appropriate. Agricultural & Industrial pollution problems were identified and rectified which may help improve Dissolved Oxygen levels.
Targeted river walk surveys to investigate the cause of biotic score depression. River walk should determine and address sources of organic pollution affecting benthic invertebrates and resulting in low biotic scores and/or observed sewage fungus.	<p>River survey work carried out on the following river systems:</p> <ul style="list-style-type: none"> • Colebrooke River UKGBNI1NW363602018 • Finn River Tributary UKGBNI1NW363602026 • Finn River Middle UKGBNI1NW363602105 • Killylackey River Upper UKGBNI1NW363602104 • Woodford River Tributary UKGBNI1NW363602029 • Newtownbutler Stream UKGBNI1NW363602028 • Hollybrook River UKGBNI1NW363602025 • Colebrooke River Fivemiletown UKGBNI1NW363602081
Target Pollution Prevention advice to industrial premises and investigate any unconsented industrial discharges. Where required ensure	2 unconsented premises were identified, visited and companies to apply for Water Order (NI) consents.

Water Order consent is obtained.	
Investigate agricultural practices in the catchment through river walks and analysis of agricultural pollution incidents and cross compliance data. Carry out visits where necessary.	8 water bodies have been targeted and river walks/field survey work has been carried out. 22 scheduled cross compliance visits carried out in the Erne & Melvin catchment in 2011.
Carry out compliance assessment of WWTW's > 250 PE to inform future upgrades	Visited Rosslea, Lisnaskea, Newtownbutler and Tempo WWTW. The receiving waterway upstream and downstream of Tempo WWTW is being sampled in 2012 to assess any impact on water quality.
Investigate downstream impacts of WWTW's <250 PE and review performance if necessary.	Visited 3 WWTW sites: Donagh, Monmurray & Tamlaght to assess any impact on the receiving waterway.
Investigate impact of forestry operations within forestry management units within the Upper Lough Erne LMA.	The impact of forestry on water quality is being investigated by ascertaining felling programme in the catchment and engagement with forestry technical field staff / private landowners to ensure measures are in place to mitigate risks from felling. The importance of good practice for all forestry activities to reduce the risk to the aquatic environment has been emphasised. Forest Service (NI) follows the 'Forest & Water Guidelines' produced by the Forestry Commission.
Investigate the impact of quarrying activities	There are a number of quarries in the Upper Lough Erne LMA. NIEA regulate, inspect and monitor quarry discharges as appropriate.
Review the Rivers Agency's maintenance programme.	Meet with Rivers Agency approx. 3 times per year to discuss the maintenance programme for targeted waterbodies.

If you are running a project or carrying out work that will assist in protecting the water environment let us know by contacting Eileen Mallon Catchment Management Officer for the Upper Lough Erne LMA eileen.mallon@doeni.gov.uk or 028 92633442

If you become aware of a water pollution incident please call the Water Pollution Freephone Hotline in confidence with the location of the pollution incident and the nature of the pollution



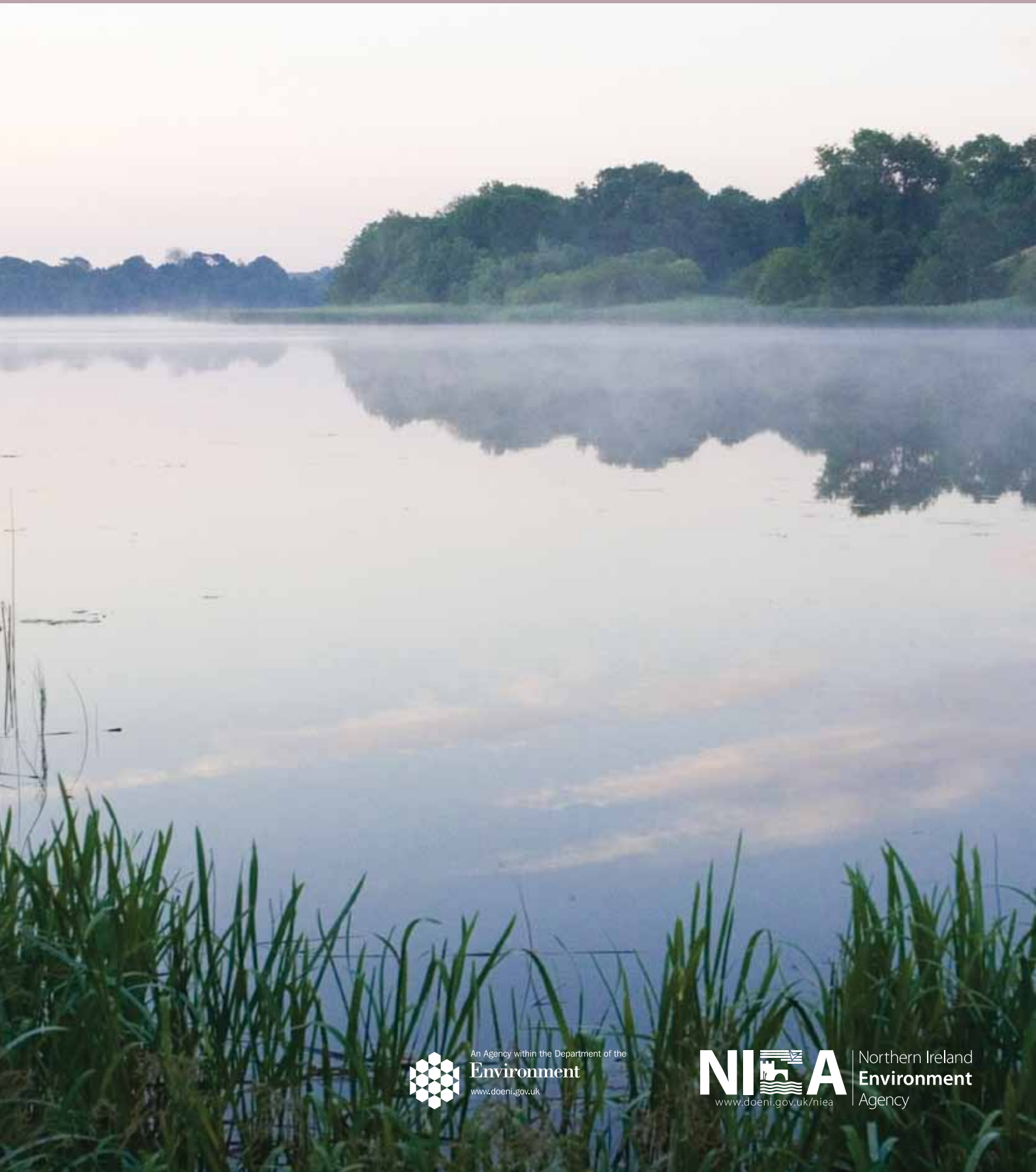
Northern Ireland
Environment Agency

Action Plan 2009 - 2015

March 2012

UPPER LOUGH ERNE

Local Management Area

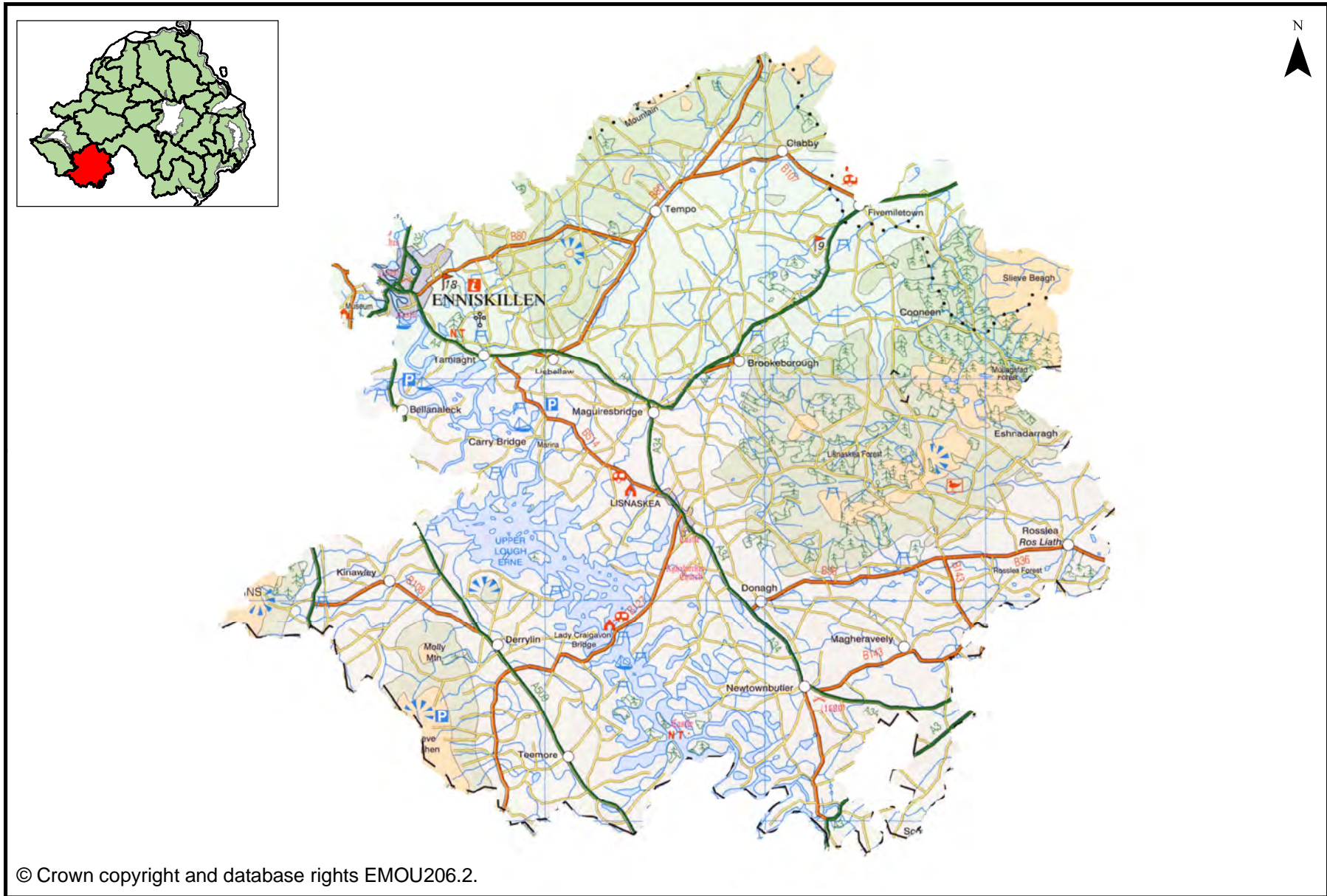


An Agency within the Department of the
Environment
www.doeni.gov.uk



Northern Ireland
Environment
Agency

Map 1: Upper Lough Erne Local Management Area



Introduction

River Basin Management Plans were published in December 2009. The plans describe where the water environment needs to be protected or improved, the timeframe to make these improvements and how that can be achieved. The plans will be implemented through Local Management Areas (LMAs) during the 2009 to 2015 planning cycle. This Upper Lough Erne Local Management Area Action Plan is one of a series of action plans that have been developed for the 26 LMAs across the Neagh Bann, North Western and North Eastern River Basin Districts. The action plan details local measures identified to improve the water environment.

The Upper Lough Erne Local Management Area

The Upper Lough Erne LMA (Map1), part of the North Western River Basin District, covers an area of approximately 869 km² in Northern Ireland. The River Erne rises in the Republic of Ireland and flows north westerly via both Upper and Lower Lough Erne before ultimately draining into Donegal Bay at Kildoney Point. This LMA contains the Upper Lough and all the rivers and tributaries that flow into it e.g. Newtownbutler, Lough-A-Hache, Colebrook, Tempo, Swanlinbar, Finn and Woodford.

The main towns in the area are Enniskillen, Lisnaskea, Fivemiletown, Lisbellaw and Newtownbutler with a number of smaller towns and villages including Tempo, Brookeborough, Derrylin, Bellanaleck and Kinawley. In all, the area supports over 33,000 people. The dominant land use is improved grassland with acid grass.

The Upper Lough Erne LMA supports important habitats and wildlife. These areas have been designated under European Directives and require special protection. Details of the protected areas are summarised in a table at the end of this report.

What is the status of the water environment in the Upper Lough Erne LMA?

76% of the surface water bodies in the Upper Lough Erne LMA (Map 2) have been classified as less than good. The main impact was seen in dissolved oxygen levels and also invertebrate communities. These elements are mainly connected with organic enrichment and the rivers affected include: Colebrook, Newtownbutler, Lough-A-Hache, Woodford Tributary, Swanlinbar, Lacky, Killylacky and Finn.

In addition to organic enrichment, there is also evidence of nutrient enrichment indicated by the number of water bodies affected by impacts on macrophyte and diatom communities. These rivers include Colebrook, Newtownbutler, Tempo and Swanlinbar. Upper Lough Erne also shows evidence of nutrient enrichment.

There are nineteen groundwater bodies within the Upper Lough Erne LMA. All have been classified as good for both quantitative and chemical status. We aim to maintain good status in 100% of our groundwater bodies.

Map 2: 2009 status of surface water bodies in Upper Lough Erne LMA

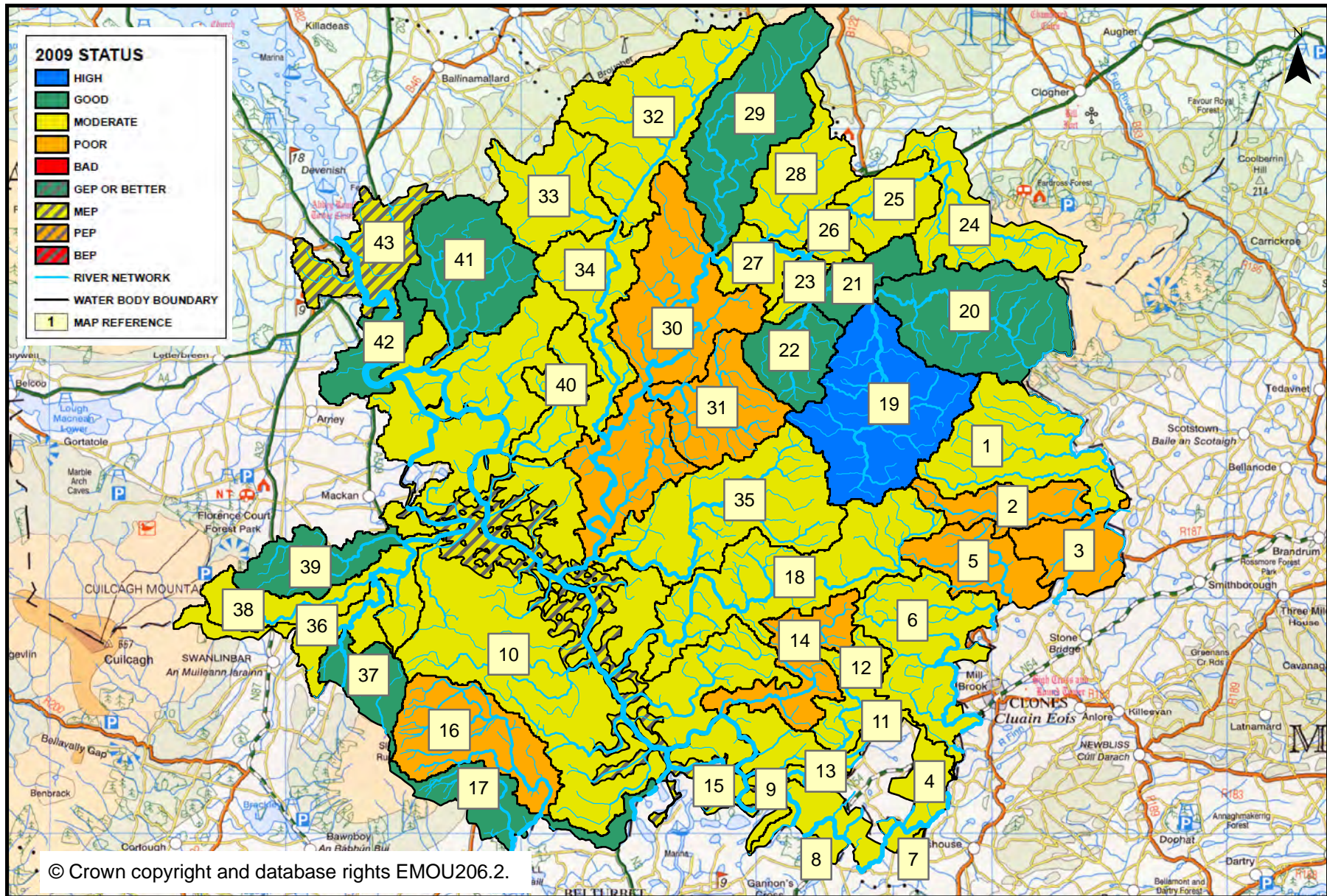


Table 1: Water Body Objectives

Map Reference	Water Body Code	Water Body Name	2009 Status	2015 Objective	Page Number
1	UKGBNI1NW363602106	Finn River Upper	Moderate	Good	10
2	UKGBNI1NW363602026	Finn River tributary	Poor	Moderate	10
3	UKGBNI1NW363602105	Finn River Middle	Poor	Moderate	11
4	UKGBNI1NW363602097	Finn River Lower	Moderate	Moderate	11
5	UKGBNI1NW363602104	Killylacky River Upper	Poor	Moderate	12
6	UKGBNI1NW363602103	Lack River - Killylacky River Lower	Moderate	Good	12
7	UKGBNI1NW363602099	Finn River	Moderate	Good	13
8	UKGBNI1NW363602098	Finn River Lower	Moderate	Good	13
9	UKGBNI3NW0008	Upper Lough Erne	MEP	MEP	14
10	UKGBNI1NW363602063	Upper Lough Erne	Moderate	Good	14
11	UKGBNI1NW363602101	Starraghen Tributary	Moderate	Moderate	15
12	UKGBNI1NW363602102	Starraghen Tributary Upper	Moderate	Moderate	15
13	UKGBNI1NW363602100	Starraghen Tributary Lower	Moderate	Moderate	15
14	UKGBNI1NW363602028	Newtownbutler Stream	Poor	Moderate	16
15	UKGBNI1NW363602096	Erne River - ROI	Poor	Moderate	16
16	UKGBNI1NW363602029	Woodford River Tributary	Poor	Moderate	16
17	UKGBNI1NW363602067	Woodford River	Good	Good	17
18	UKGBNI1NW363602024	River Erne Tributary	Moderate	Moderate	17
19	UKGBNI1NW363602030	Cooneen River	High	High	17
20	UKGBNI1NW363602086	Colebrooke River 5 (Upper)	Good	Good	18
21	UKGBNI1NW363602019	Colebrooke River	Good	Good	18
22	UKGBNI1NW363602020	Colebrooke River Tributary	Good	Good	18

Table 1: Water Quality Objectives (continued)

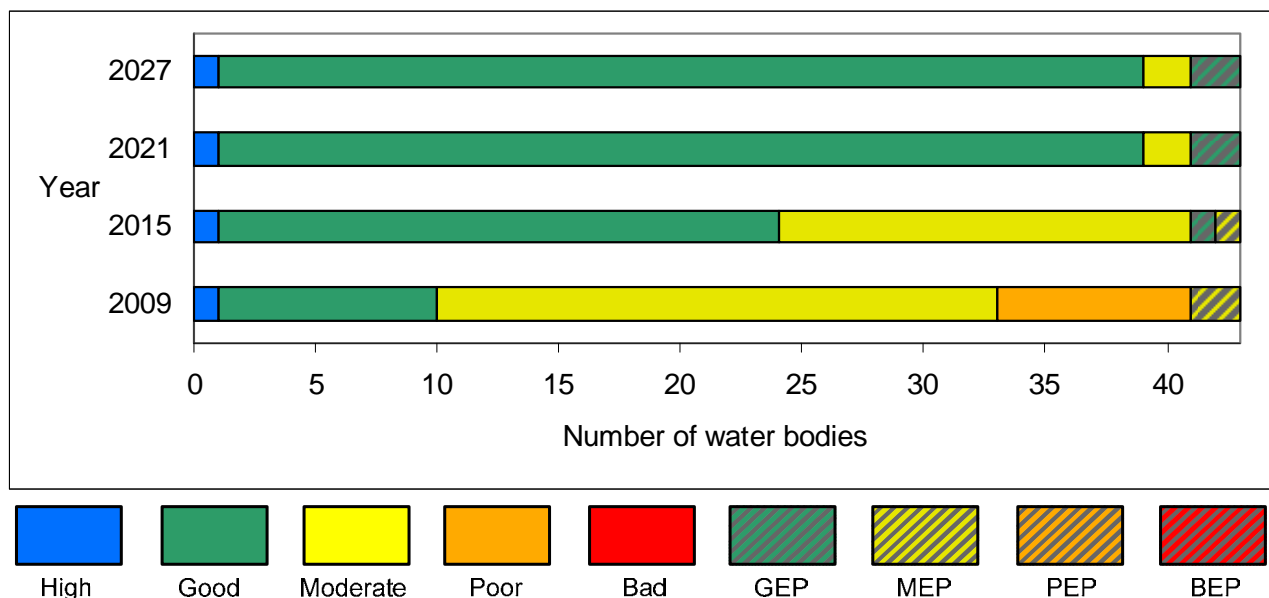
Map Reference	Water Body Code	Water Body Name	2009 Status	2015 Objective	Page Number
23	UKGBNI1NW363602023	Colebrooke River	Moderate	Good	19
24	UKGBNI1NW363602082	Colebrooke River Upper	Moderate	Good	19
25	UKGBNI1NW363602081	Colebrooke River Fivemiletown	Moderate	Good	20
26	UKGBNI1NW363602021	Colebrooke River Tributary	Moderate	Moderate	20
27	UKGBNI1NW363602014	Colebrooke River	Moderate	Good	20
28	UKGBNI1NW363602083	Whitehill Stream Colebrooke	Moderate	Good	21
29	UKGBNI1NW363602085	Many Burns River	Good	Good	21
30	UKGBNI1NW363602018	Colebrooke River	Poor	Moderate	22
31	UKGBNI1NW363602016	Colebrooke River Tributary	Poor	Moderate	22
32	UKGBNI1NW363602043	Tempo River	Moderate	Good	23
33	UKGBNI1NW363602054	Tempo River Tributary	Moderate	Good	23
34	UKGBNI1NW363602022	Tempo River	Moderate	Moderate	24
35	UKGBNI1NW363602025	Hollybrook River	Moderate	Moderate	24
36	UKGBNI1NW363602094	Swanlinbar River Upper	Moderate	Moderate	25
37	UKGBNI1NW363602095	Owengarr River	Good	Good	25
38	UKGBNI1NW363602050	Swanlinbar River	Moderate	Good	26
39	UKGBNI1NW363602051	Swanlinbar River Tributary	Good	Good	26
40	UKGBNI1NW363602017	River Erne Tributary	Moderate	Good	26
41	UKGBNI1NW363602038	Tamlaght Stream	Good	Good	27
42	UKGBNI1NW363602035	River Erne Bellanaleck	Good	Good	27
43	UKGBNI1NW363602039	River Erne Enniskillen	MEP	GEP	27

This page is intentionally blank.

What improvements do we plan to achieve?

We have set environmental objectives to deliver improvements as shown below. We aim to achieve good status or better in 58% of the surface waters by 2015. We also aim to maintain good status in 100% of our groundwaters.

Figure 1: 2009 Status and proposed objectives for surface waters in Upper Lough Erne LMA



How are we going to improve the water environment in the Upper Lough Erne LMA?

There are a number of actions which will be implemented in the Upper Lough Erne LMA in order to maintain and improve the water environment. The list of actions below sets out details of actions to be applied throughout the Upper Lough Erne LMA. This is followed by specific actions for individual water bodies.

The actions below apply throughout the LMA.

	Action to be taken	Action to be taken by	Target Date
1	Complete desktop study and risk analysis using available catchment data to identify areas under pressure and allow further investigations on the ground to be carried out.	DOE NIEA	Completed
2	Carry out monitoring and assessment to identify and address pressures throughout the Upper Lough Erne LMA.	DOE NIEA	Mar 2013
3	Carry out agricultural advisory site visits as required to reduce water pollution risk.	DARD Countryside Management Branch	Dec 2015
4	Carry out compliance assessment for cross compliance agricultural inspections.	DOE NIEA	Mar 2013
5	Conduct invasive alien species recording during river walks and raise awareness on how to prevent the spread of invasive alien species such as Nuttall's Pondweed which is present in Upper Lough Erne..	DOE NIEA	Dec 2015
6	Raise awareness and promote the benefits of effective farm nutrient and waste management.	DOE NIEA, DARD Countryside Management Branch	Dec 2013
7	Encourage riparian zone management with an aim to improve biodiversity and minimise sedimentation through practical management measures on farms.	DARD Countryside Management Branch	Dec 2015
8	Complete the phosphorus nutrient budget work for Northern Ireland to establish nutrient inputs from different sectors.	DOE NIEA, AFBI	Mar 2013
9	Conduct a water resource assessment to inform an ongoing review of abstraction licences within Northern Ireland.	DOE NIEA	Mar 2012
10	Review of groundwater abstraction and planning applications where necessary.	DOE NIEA, Geological Survey NI	Dec 2015
11	Review Rivers Agency's annual watercourse maintenance program.	DOE NIEA, DARD Rivers Agency	Mar 2013
12	Develop leaflets and articles to promote effective farm nutrient and waste management.	DOE NIEA, DARD Countryside Management Branch	Dec 2015
13	Highlight external funding opportunities for water management projects to local partners such as the Woodland Trust scheme.	DOE NIEA	Mar 2013
14	Promote public participation organise 2 Catchment Stakeholder Group meetings per annum to provide a forum for discussing local water quality issues and encourage involvement in developing and implementing the Local Management Area Action Plan.	DOE NIEA, All Stakeholders	Dec 2013

	Action to be taken	Action to be taken by	Target Date
15	Promote public participation by raising awareness of the Rivers Trust.	DOE NIEA	Mar 2013
16	Promote public participation , raise awareness of catchment management issues by release of relevant press articles and web publication of the Upper Lough Erne e-zine.	DOE NIEA	Mar 2013
17	Support local environmental initiatives , promote and encourage local projects through WATER Environment Community awards.	DOE NIEA	Mar 2013
18	Support local environmental initiatives such as clean-sup campaigns.	DOE NIEA	Mar 2013
19	Promote the NIEA Water Pollution Hotline through increased advertising, promotion and waterside signage.	DOE NIEA	Mar 2013
20	Support pollution prevention campaigns such as 'Reduce Reuse Recycle', 'Bag It & Bin It', 'Stop and Think (Not Down the Sink)'. .	DOE NIEA	Dec 2015

The actions below apply to individual water bodies in the LMA. The 2009 status or ecological potential is shown for each water body.

UKGBNI1NW363602106		Finn River Upper	2009 Status: Moderate	
	Action to be taken		Action to be taken by	Target Date
1	Carry out a river walk to determine the decline in the aquatic invertebrate community and dissolved oxygen levels associated with agricultural practices in the catchment.		DOE NIEA	Mar 2013
2	Provide advice on protected area designations for the Slieve Beagh-Mullaghfad-Lisnaskea Special Protect Area (SPA).		DOE NIEA	Dec 2015

[A number of catchment wide actions also apply to this water body. These can be found on Page 8.](#)

UKGBNI1NW363602026		Finn River tributary	2009 Status: Poor	
	Action to be taken		Action to be taken by	Target Date
1	Carry out a river walk to determine the decline in the aquatic invertebrate community associated with agricultural practices in the catchment.		DOE NIEA	Mar 2013
2	Assess sources of organic pollution including domestic wastewater treatment systems.		DOE NIEA	Mar 2013

[A number of catchment wide actions also apply to this water body. These can be found on Page 8.](#)

UKGBNI1NW363602105		Finn River Middle	2009 Status: Poor	
	Action to be taken		Action to be taken by	Target Date
1	Carry out a river walk to determine the decline in dissolved oxygen levels associated with agricultural practices in the catchment.		DOE NIEA	Mar 2013
2	Assess sources of organic pollution including domestic wastewater treatment systems.		DOE NIEA	Mar 2013
3	Carry out a visual inspection of WWTW at Rosslea and investigate any downstream impact from discharge.		DOE NIEA	Mar 2013
4	Carry out pollution prevention and enforcement measures, investigate any unconsented discharges and where required ensure Water Order consent is obtained.		DOE NIEA	Completed
5	Assess forestry operations by investigating the impact of forestry in the East Fermanagh forest area. Ascertain felling programme and engage with technical field staff to ensure measures are in place to mitigate risks from felling.		DOE NIEA, DARD Forest Service	Dec 2015

[A number of catchment wide actions also apply to this water body. These can be found on Page 8.](#)

UKGBNI1NW363602097		Finn River Lower	2009 Status: Moderate	
	Action to be taken		Action to be taken by	Target Date
1	Carry out a river walk to determine the decline in dissolved oxygen levels associated with agricultural practices in the catchment.		DOE NIEA	Mar 2013
2	Assess sources of organic pollution including domestic wastewater treatment systems.		DOE NIEA	Mar 2013
3	Liaise with ROI organisations with the aim of identifying and dealing with potential cross-border water pollution issues.		DOE NIEA, Monaghan County Council, IFI, EPA	Mar 2013
4	Provide advice on protected area designations for the Upper Lough Erne Special Protected Area (SPA).		DOE NIEA	Dec 2015
5	Carry out freshwater fish monitoring with the aim of completing WFD monitoring at programmed surveillance monitoring stations in this water body.		DOE NIEA	Mar 2013

[A number of catchment wide actions also apply to this water body. These can be found on Page 8.](#)

UKGBNI1NW363602104		Killylacky River Upper	2009 Status: Poor	
	Action to be taken		Action to be taken by	Target Date
1	Carry out a river walk to determine the decline in the aquatic invertebrate, aquatic plant communities & dissolved oxygen levels associated with agricultural practices in the catchment.		DOE NIEA	Mar 2013
2	Assess sources of organic pollution including domestic wastewater treatment systems.		DOE NIEA	Mar 2013
A number of catchment wide actions also apply to this water body. These can be found on Page 8.				

UKGBNI1NW363602103		Lacky River - Killylacky River Lower	2009 Status: Moderate	
	Action to be taken		Action to be taken by	Target Date
1	Carry out a river walk to determine the decline in the aquatic invertebrate community and dissolved oxygen levels associated with agricultural practices in the catchment.		DOE NIEA	Mar 2013
2	Carry out a visual inspection of WWTW at Magheraveely and investigate any downstream impact from discharge.		DOE NIEA	Mar 2013
3	Upgrading of WWTW at Magheraveely, work is due to commence in 2012.		DOE NIEA	Mar 2013
4	Liaise with ROI organisations with the aim of identifying and dealing with potential cross-border water pollution issues.		Monaghan County Council, DOE NIEA	Mar 2013
5	Assess sources of organic pollution including domestic wastewater treatment systems.		DOE NIEA	Mar 2013
6	Provide advice on protected area designations for the Marl Lakes Area of Special Scientific Interest (ASSI).		DOE NIEA	Dec 2015
A number of catchment wide actions also apply to this water body. These can be found on Page 8.				

UKGBNI1NW363602099		Finn River	2009 Status: Moderate	
	Action to be taken		Action to be taken by	Target Date
1	Carry out a river walk to investigate agricultural practices in the catchment.		DOE NIEA	Mar 2013
2	Liaise with ROI organisations with the aim of identifying and dealing with potential cross-border water pollution issues.		DOE NIEA, Monaghan County Council, IFI, EPA.	Mar 2013
3	Assess sources of organic pollution including domestic wastewater treatment systems.		DOE NIEA	Mar 2013

[A number of catchment wide actions also apply to this water body. These can be found on Page 8.](#)

UKGBNI1NW363602098		River Finn Lower	2009 Status: Moderate	
	Action to be taken		Action to be taken by	Target Date
1	Carry out a river walk to investigate agricultural practices in the catchment.		DOE NIEA	Mar 2013
2	Liaise with ROI organisations with the aim of identifying and dealing with potential cross-border water pollution issues.		DOE NIEA, Monaghan County Council, IFI, EPA.	Mar 2013
3	Assess sources of organic pollution including domestic wastewater treatment systems.		DOE NIEA	Mar 2013

[A number of catchment wide actions also apply to this water body. These can be found on Page 8.](#)

UKGBNI3NW0008		Upper Lough Erne	2009 Status: MEP	
	Action to be taken		Action to be taken by	Target Date
1	Provide advice on protected area designations for Upper Lough Erne which is designated as an: SAC, SPA, ASSI, RAMSAR site.		DOE NIEA	Dec 2015
2	Carry out compliance assessment relating to the Prevention of Pollution (Erne System) Regulations N.I. (1994) for boats with WC facilities.		DOE NIEA	Mar 2013
3	Carry out monitoring and assessment of decommissioned Glassmullagh waste disposal site.		Fermanagh District Council	Mar 2013
4	Obtain data on reservoir / lake levels, catchment flows and transfers of water from other water body sources to inform the review of the current abstraction / impoundment licence at Killyhevlin.		DOE NIEA	Dec 2019
5	Review the current abstraction licence to finalise maximum abstraction volumes, take account of seasonal variations and ensure the ecological need for compensation flows are fully considered at Killyhevlin.		DOE NIEA	Dec 2019
6	Identification of contamination risks from 'source to tap' through the development of drinking water safety plans at the Killyhevlin WWTW.		NIWL	Mar 2015
7	Continue to monitor mitigation measures through Drinking Water Inspectorate regulatory processes within this catchment.		DOE DWI	Mar 2015
8	Support local measures that will improve water quality, in particular, reduction in the presence of pesticides and the levels of organic matter in raw water which cause implications for water treatment at the Killyhevlin WWTW.		NIWL, DOE DWI, DOE NIEA	Mar 2015

[A number of catchment wide actions also apply to this water body. These can be found on Page 8.](#)

UKGBNI1NW363602063		Upper Lough Erne	2009 Status: Moderate	
	Action to be taken		Action to be taken by	Target Date
1	Carry out monitoring and assessment of Derrylin WWTW system upstream and downstream of the discharge point.		DOE NIEA	Completed
2	Carry out compliance assessment relating to the Prevention of Pollution (Erne System) Regulations N.I. (1994) for boats with WC facilities.		DOE NIEA	Mar 2013
3	Provide advice on protected area designations for Knockninny Area of Special Scientific Interest (ASSI) located in this water body.		DOE NIEA	Dec 2015

[A number of catchment wide actions also apply to this water body. These can be found on Page 8.](#)

UKGBNI1NW363602101		Starraghen Tributary		2009 Status: Moderate	
Action to be taken		Action to be taken by	Target Date		
1	Carry out a river walk to determine the decline in dissolved oxygen levels associated with agricultural practices in the catchment.	DOE NIEA	Mar 2013		
2	Liaise with ROI organisations with the aim of identifying and dealing with potential cross-border water pollution issues.	DOE NIEA, Monaghan County Council, IFI, EPA	Mar 2013		
3	Assess sources of organic pollution including domestic wastewater treatment systems.	DOE NIEA	Mar 2013		
A number of catchment wide actions also apply to this water body. These can be found on Page 8.					

UKGBNI1NW363602102		Starraghen Tributary Upper		2009 Status: Moderate	
Action to be taken		Action to be taken by	Target Date		
1	Carry out a river walk to determine the decline in dissolved oxygen levels associated with agricultural practices in the catchment.	DOE NIEA	Mar 2013		
2	Assess sources of organic pollution including domestic wastewater treatment systems.	DOE NIEA	Mar 2013		
A number of catchment wide actions also apply to this water body. These can be found on Page 8.					

UKGBNI1NW363602100		Starraghen Tributary Lower		2009 Status: Moderate	
Action to be taken		Action to be taken by	Target Date		
1	Carry out a river walk to determine the decline in dissolved oxygen levels associated with agricultural practices in the catchment.	DOE NIEA	Mar 2013		
2	Liaise with ROI organisations with the aim of identifying and dealing with potential cross-border water pollution issues.	DOE NIEA, Monaghan County Council, IFI, EPA	Mar 2013		
3	Assess sources of organic pollution including domestic wastewater treatment systems.	DOE NIEA	Mar 2013		
A number of catchment wide actions also apply to this water body. These can be found on Page 8.					

UKGBNI1NW363602028		Newtownbutler Stream	2009 Status: Poor	
	Action to be taken		Action to be taken by	Target Date
1	Carry out a river walk to determine the decline in the aquatic invertebrate and aquatic plant communities along with dissolved oxygen levels associated with agricultural practices in the catchment.		DOE NIEA	Mar 2013
2	Assess sources of organic pollution including NIWL intermittent discharges/sewage pumping stations & domestic/commercial WWTWs.		DOE NIEA	Mar 2013
3	Carry out compliance assessment and investigate any downstream impact from industrial discharges.		DOE NIEA	Mar 2013
4	Carry out monitoring and assessment of Newtownbutler's WWTW system upstream & downstream of the discharge point.		DOE NIEA	Completed

[A number of catchment wide actions also apply to this water body. These can be found on Page 8.](#)

UKGBNI1NW363602096		Erne River - ROI	2009 Status: Poor	
	Action to be taken		Action to be taken by	Target Date
1	Carry out a river walk to investigate agricultural practices in the catchment.		DOE NIEA	Mar 2013
2	Liaise with ROI organisations with the aim of identifying and dealing with potential cross-border water pollution issues.		DOE NIEA, Cavan County Council, IFI, EPA.	Mar 2013

[A number of catchment wide actions also apply to this water body. These can be found on Page 8.](#)

UKGBNI1NW363602029		Woodford River tributary	2009 Status: Poor	
	Action to be taken		Action to be taken by	Target Date
1	Carry out a river walk to investigate the decline in the aquatic invertebrate community & dissolved oxygen levels associated with agricultural practices in the catchment.		DOE NIEA	Mar 2013
2	Carry out compliance assessment and investigate any downstream impact from industrial discharges.		DOE NIEA	Mar 2013
3	Provide advice on protected area designations for Moninea Bog Special Area of Conservation (SAC) located in this water body.		DOE NIEA	Dec 2015

[A number of catchment wide actions also apply to this water body. These can be found on Page 8.](#)

UKGBNI1NW363602067		Woodford River	2009 Status: Good	
	Action to be taken		Action to be taken by	Target Date
1	Maintain current regulatory controls as water body status is Good or better.		DOE NIEA, All Stakeholders	Dec 2015
2	Provide advice on protected area designations for Moninea Bog Special Area Conservation (SAC) located in this water body.		DOE NIEA	Dec 2015
A number of catchment wide actions also apply to this water body. These can be found on Page 8.				

UKGBNI1NW363602024		River Erne tributary	2009 Status: Moderate	
	Action to be taken		Action to be taken by	Target Date
1	Carry out a river walk to determine the decline in the aquatic invertebrate community & dissolved oxygen levels associated with agricultural practices in the catchment.		DOE NIEA	Mar 2013
2	Upgrading of WWTW at Donagh, the WWTW is due for upgrade 2012.		NIWL	Dec 2012
3	Carry out compliance assessment and investigate any downstream impact from industrial discharges.		DOE NIEA	Mar 2013
4	Assess sources of organic pollution including NIWL intermittent discharges/sewage pumping stations & domestic/commercial WWTWs.		DOE NIEA	Mar 2013
5	Assess forestry operations by investigating the impact of forestry in the East Fermanagh forest area. Ascertain felling programme and engage with technical field staff to ensure measures are in place to mitigate risks from felling.		DOE NIEA, DARD Forest Service	Dec 2015
6	Provide advice on protected area designations for the Slieve Beagh-Mullaghfad-Lisnaskea Special Protected Area (SPA).		DOE NIEA	Dec 2015
A number of catchment wide actions also apply to this water body. These can be found on Page 8.				

UKGBNI1NW363602030		Cooneen River	2009 Status: High	
	Action to be taken		Action to be taken by	Target Date
1	Maintain current regulatory controls as water body status is Good or better.		DOE NIEA	Dec 2015
2	Provide advice on protected area designations for the Slieve Beagh-Mullaghfad-Lisnaskea Special Protected Area (SPA) and Lough Corry Area of Special Scientific Interest (ASSI) located in this water body.		DOE NIEA	Dec 2015
A number of catchment wide actions also apply to this water body. These can be found on Page 8.				

UKGBNI1NW363602086		Colebrooke River 5 (Upper)	2009 Status: Good	
	Action to be taken		Action to be taken by	Target Date
1	Maintain current regulatory controls as water body status is Good or better.		DOE NIEA	Dec 2015
2	Carry out fish monitoring and assessment at 2 locations to determine juvenile Atlantic salmon recruitment under the NASCO Treaty.		DCAL Inland Fisheries	Mar 2013
3	Assess forestry operations to investigate impact of forestry in the East Fermanagh forest area. Ascertain felling programme and engage with technical field staff to ensure measures are in place to mitigate risks from felling.		DOE NIEA, DARD Forest Service	Dec 2015
4	Provide advice on protected area designations for the Slieve Beagh-Mullaghfad-Lisnaskea Special Protected Area (SPA).		DOE NIEA	Dec 2015

[A number of catchment wide actions also apply to this water body. These can be found on Page 8.](#)

UKGBNI1NW363602019		Colebrooke River	2009 Status: Good	
	Action to be taken		Action to be taken by	Target Date
1	Maintain current regulatory controls as water body status is Good or better.		DOE NIEA, All Stakeholders	Dec 2015
2	Carry out monitoring and assessment at 2 locations to determine juvenile Atlantic salmon recruitment under the NASCO Treaty.		DCAL Inland Fisheries	Mar 2013

[A number of catchment wide actions also apply to this water body. These can be found on Page 8.](#)

UKGBNI1NW363602020		Colebrooke River tributary	2009 Status: Good	
	Action to be taken		Action to be taken by	Target Date
1	Maintain current regulatory controls as water body status is Good or better.		DOE NIEA, All Stakeholders	Dec 2015
2	Provide advice on protected area designations for the Slieve Beagh-Mullaghfad-Lisnaskea Special Protected Area (SPA).		DOE NIEA	Dec 2015

[A number of catchment wide actions also apply to this water body. These can be found on Page 8.](#)

UKGBNI1NW363602023		Colebrooke River	2009 Status: Moderate	
	Action to be taken		Action to be taken by	Target Date
1	Carry out a river walk to determine the decline in dissolved oxygen levels associated with agricultural practices in the catchment.		DOE NIEA	Mar 2013
2	Carry out fish monitoring and assessment at 1 location to determine juvenile Atlantic salmon recruitment under the NASCO Treaty.		DCAL Inland Fisheries	Mar 2013

[A number of catchment wide actions also apply to this water body. These can be found on Page 8.](#)

UKGBNI1NW363602082		Colebrooke River upper	2009 Status: Moderate	
	Action to be taken		Action to be taken by	Target Date
1	Carry out a river walk to determine the decline in the phytobenthos community associated with agricultural practices in the catchment.		DOE NIEA	Mar 2012
2	Assess sources of organic pollution including domestic wastewater treatment systems.		DOE NIEA	Mar 2013
3	Assess forestry operations to investigate the impact of forestry in the East Fermanagh forest area. Ascertain felling programme and engage with technical field staff to ensure measures are in place to mitigate risks from felling.		DOE NIEA , DARD Forest Service	Mar 2015
4	Carry out fish monitoring and assessment at 3 locations to determine juvenile Atlantic salmon recruitment under the NASCO Treaty.		DCAL Inland Fisheries	Mar 2013
5	Provide advice on protected area designations for Slieve Beagh Special Area of Conservation (SAC) & an Area of Special Scientific Interest (ASSI) located in this water body.		DOE NIEA	Dec 2015
6	Carry out freshwater fish monitoring with the aim of completing WFD monitoring at programmed surveillance monitoring stations in this water body.		DOE NIEA	Mar 2013

[A number of catchment wide actions also apply to this water body. These can be found on Page 8.](#)

UKGBNI1NW363602081		Colebrooke River Fivemiletown	2009 Status: Moderate	
	Action to be taken		Action to be taken by	Target Date
1	Carry out a river walk to determine the decline in dissolved oxygen levels associated with agricultural practices in the catchment.		DOE NIEA	Mar 2013
2	Carry out compliance assessment and investigate any downstream impact from industrial discharges.		DOE NIEA	Mar 2013
3	Carry out fish monitoring and assessment at 2 locations to determine juvenile Atlantic salmon recruitment under the NASCO Treaty.		DCAL Inland Fisheries	Mar 2013
A number of catchment wide actions also apply to this water body. These can be found on Page 8.				

UKGBNI1NW363602021		Colebrooke River tributary	2009 Status: Moderate	
	Action to be taken		Action to be taken by	Target Date
1	Carry out a river walk to determine the decline in dissolved oxygen levels associated with agricultural practices in the catchment.		DOE NIEA	Mar 2013
2	Assess sources of organic pollution including domestic wastewater treatment systems.		DOE NIEA	Mar 2013
3	Carry out fish monitoring and assessment at 1 location to determine juvenile Atlantic salmon recruitment under the NASCO Treaty.		DCAL Inland Fisheries	Mar 2013
A number of catchment wide actions also apply to this water body. These can be found on Page 8.				

UKGBNI1NW363602014		Colebrooke River	2009 Status: Moderate	
	Action to be taken		Action to be taken by	Target Date
1	Carry out a river walk to determine the decline in the aquatic invertebrate community associated with agricultural practices in the catchment.		DOE NIEA	Mar 2013
2	Assess sources of organic pollution including domestic wastewater treatment systems.		DOE NIEA	Mar 2013
3	Carry out a visual inspection of WWTW and investigate any downstream impact from discharge.		DOE NIEA	Mar 2013
4	Carry out fish monitoring and assessment at 1 location to determine juvenile Atlantic salmon recruitment under the NASCO Treaty.		DCAL Inland Fisheries	Mar 2013
A number of catchment wide actions also apply to this water body. These can be found on Page 8.				

UKGBNI1NW363602083		Whitehill Stream Colebrooke	2009 Status: Moderate	
Action to be taken		Action to be taken by	Target Date	
1	Carry out a river walk to determine the decline in aquatic plants, dissolved oxygen & BOD levels associated with agricultural practices in the catchment.	DOE NIEA	Mar 2013	
2	Carry out compliance assessment and investigate any downstream impact from industrial discharges.	DOE NIEA	Mar 2013	

[A number of catchment wide actions also apply to this water body. These can be found on Page 8.](#)

UKGBNI1NW363602085		Many Burns River	2009 Status: Good	
Action to be taken		Action to be taken by	Target Date	
1	Carry out monitoring and assessment of Clabby WWTW system upstream & downstream of the discharge point.	DOE NIEA	Completed	
2	Carry out pollution prevention and enforcement measures, investigate any unconsented industrial discharges and where required ensure Water Order consent is obtained.	DOE NIEA	Mar 2013	
3	Carry out fish monitoring and assessment at 8 locations to determine juvenile Atlantic salmon recruitment under the NASCO Treaty.	DCAL Inland Fisheries	Mar 2013	
4	Maintain current regulatory controls as water body status is Good or better.	DOE NIEA, All Stakeholders	Dec 2015	

[A number of catchment wide actions also apply to this water body. These can be found on Page 8.](#)

UKGBNI1NW363602018		Colebrooke River	2009 Status: Poor	
	Action to be taken		Action to be taken by	Target Date
1	Carry out monitoring and assessment to determine the decline in the phytobenthos community by means of additional biological survey work.		DOE NIEA	Completed
2	Carry out a river walk to determine the decline in the phytobenthos community associated with agricultural practices in the catchment.		DOE NIEA	Mar 2013
3	Assess sources of organic pollution including NIW intermittent discharges/sewage pumping stations & domestic/commercial WWTWs.		DOE NIEA	Mar 2013
4	Carry out a visual inspection of WWTW at Brookborough and investigate any downstream impact from discharge at Littlemount Bridge.		DOE NIEA	Mar 2013
5	Carry out a visual inspection of WWTW at Monmurray and investigate any downstream impact from discharge.		DOE NIEA	Mar 2013
6	Investigate identified water quality impacts such as the downstream impact of the Combined Storm Overflow (CSO) discharge at Maguiresbridge.		DOE NIEA	Mar 2013
7	Carry out pollution prevention and enforcement measures, investigate any unconsented industrial discharges and where required ensure Water Order consent is obtained.		DOE NIEA	Mar 2013
8	Carry out fish monitoring and assessment at 3 locations to determine juvenile Atlantic salmon recruitment under the NASCO Treaty.		DCAL Inland Fisheries	Mar 2013
9	Carry out monitoring and assessment of water quality in this water body following the Erne Nutrient Management Scheme.		AFBI	Mar 2013
10	Provide advice on protected area designations for the Special Protected Area (SPA) located in this water body.		DOE NIEA	Dec 2015
A number of catchment wide actions also apply to this water body. These can be found on Page 8.				

UKGBNI1NW363602016		Colebrooke River tributary	2009 Status: Poor	
	Action to be taken		Action to be taken by	Target Date
1	Carry out a river walk to determine the decline in aquatic invertebrates & aquatic plant communities associated with agricultural practices in the catchment.		DOE NIEA	Mar 2013
2	Assess sources of organic pollution including domestic wastewater treatment systems.		DOE NIEA	Mar 2013
3	Carry out a visual inspection of WWTW to investigate downstream impact of Brookborough's WWTW storm overflow.		DOE NIEA	Mar 2013
4	Carry out monitoring and assessment of water quality in this water body following the Erne Nutrient Management Scheme.		AFBI	Mar 2013
A number of catchment wide actions also apply to this water body. These can be found on Page 8.				

UKGBNI1NW363602043		Tempo River	2009 Status: Moderate	
	Action to be taken		Action to be taken by	Target Date
1	Carry out monitoring and assessment of Tempo's WWTW system upstream & downstream of the discharge point.		DOE NIEA	Mar 2013
2	Undertake river restoration project to carry out river habitat enhancement work on a stretch of the Tempo River on the outskirts of Tempo village, commencing in Spring 2012.		DCAL Inland Fisheries, DARD Rivers Agency	Mar 2013
3	Carry out full RHAT assessment on the stretch of the Tempo River identified for river habitat enhancement work.		DOE NIEA	Dec 2012
4	Carry out pre and post fish habitat improvement works survey on the stretch of the Tempo River identified for river habitat enhancement.		DCAL Inland Fisheries	Mar 2013
5	Carry out pollution prevention and enforcement measures, investigate any unconsented discharges and where required ensure Water Order consent is obtained.		DOE NIEA	Mar 2013
6	Assess forestry operations by investigating the impact of forestry in the East Fermanagh forest area. Ascertain felling programme and engage with technical field staff to ensure measures are in place to mitigate risks from felling.		DOE NIEA , DARD Forest Service	Dec 2015
7	Carry out fish monitoring and assessment at 5 locations to determine juvenile Atlantic salmon recruitment under the NASCO Treaty.		DCAL Inland Fisheries	Mar 2013
8	Provide advice on protected area designations for the Coolcran Area of Special Scientific Interest (ASSI) located in this water body.		DOE NIEA	Dec 2015
A number of catchment wide actions also apply to this water body. These can be found on Page 8.				

UKGBNI1NW363602054		Tempo River tributary	2009 Status: Moderate	
	Action to be taken		Action to be taken by	Target Date
1	Carry out a river walk to determine the decline in the aquatic plant community associated with agricultural practices in the catchment.		DOE NIEA	Mar 2013
2	Assess forestry operations to investigate the impact of forestry in the East Fermanagh forest area. Ascertain felling programme and engage with technical field staff to ensure measures are in place to mitigate risks from felling.		DOE NIEA, DARD Forest Service	Mar 2015
3	Carry out fish monitoring and assessment at 3 locations to determine juvenile Atlantic salmon recruitment under the NASCO Treaty.		DCAL Inland Fisheries	Mar 2013
A number of catchment wide actions also apply to this water body. These can be found on Page 8.				

UKGBNI1NW363602022		Tempo River	2009 Status: Moderate	
	Action to be taken		Action to be taken by	Target Date
1	Carry out a river walk to investigate agricultural practices in the catchment.		DOE NIEA	Mar 2013
2	Consider site restoration and protection methods to reduce sedimentation and improve habitat for the Freshwater Pearl Mussel (FPM) population present in this water body.		DOE NIEA	Dec 2015
3	Provide advice on protected area designations for the Area of Special Scientific Interest (ASSI) relating to the Freshwater Pearl Mussel located in this water body.		DOE NIEA	Dec 2015
4	Carry out fish monitoring and assessment at 6 locations to determine juvenile Atlantic salmon recruitment under the NASCO Treaty.		DCAL Inland Fisheries	Mar 2013
A number of catchment wide actions also apply to this water body. These can be found on Page 8.				

UKGBNI1NW363602025		Hollybrook River	2009 Status: Moderate	
	Action to be taken		Action to be taken by	Target Date
1	Assess sources of organic pollution including NIWL intermittent discharges/sewage pumping stations & domestic/commercial WWTWs.		DOE NIEA	Mar 2013
2	Carry out compliance assessment and investigate any downstream impact from industrial discharges.		DOE NIEA	Mar 2013
3	Assess sources of organic pollution including domestic wastewater treatment systems.		DOE NIEA	Mar 2013
A number of catchment wide actions also apply to this water body. These can be found on Page 8.				

UKGBNI1NW363602094		Swanlinbar River Upper	2009 Status: Moderate	
	Action to be taken		Action to be taken by	Target Date
1	Carry out a river walk to determine the decline in the aquatic plant and Freshwater Pearl Mussel communities associated with agricultural practices in the catchment.		DOE NIEA	Mar 2013
2	Consider site restoration and protection methods to reduce sedimentation and improve habitat for the Freshwater Pearl Mussel population present in the water body.		INTERREG IVA Programme- DOE NIEA , Donegal County Council	Mar 2014
3	Carry out monitoring and assessment to assess water quality pressures & impacts relating to the Freshwater Pearl Mussel population present.		INTERREG IVA Programme - DOE NIEA, Donegal County Council	Mar 2014
4	Liaise with ROI organisations to protect the Freshwater Pearl Mussel present in this water body.		DOE NIEA, Cavan County Council, EPA, IFI	Mar 2015
5	Assess sources of organic pollution including domestic wastewater treatment systems.		DOE NIEA	Mar 2014
6	Provide advice on protected area designations for the Swanlinbar River Special Area of Conservation (SAC).		DOE NIEA, NPWS	Mar 2014
7	Carry out freshwater fish monitoring with the aim of completing WFD monitoring at programmed surveillance monitoring stations in this water body.		DOE NIEA	Mar 2013
A number of catchment wide actions also apply to this water body. These can be found on Page 8.				

UKGBNI1NW363602095		Owengarr River	2009 Status: Good	
	Action to be taken		Action to be taken by	Target Date
1	Maintain current regulatory controls as water body status is Good or better.		DOE NIEA, All Stakeholders	Dec 2015
2	Carry out pollution prevention and enforcement measures, investigate any unconsented industrial discharges and where required ensure Water Order consent is obtained.		DOE NIEA	Mar 2013
A number of catchment wide actions also apply to this water body. These can be found on Page 8.				

UKGBNI1NW363602050		Swanlinbar River	2009 Status: Moderate	
	Action to be taken		Action to be taken by	Target Date
1	Carry out a river walk to investigate agricultural practices in the catchment.		DOE NIEA	Mar 2013
2	Carry out monitoring and assessment to identify water quality pressures and impacts relating to the Freshwater Pearl Mussel population present.		INTERREG IVA Programme - DOE NIEA, Donegal County Council	Mar 2014
3	Liaise with ROI organisations to protect the Freshwater Pearl Mussel present in this water body.		DOE NIEA, Cavan County Council, IFI, EPA , NPWS	Mar 2015
4	Carry out a visual inspection of WWTW at Kinawley and investigate any downstream impact from discharge.		DOE NIEA	Mar 2013
5	Provide advice on protected area designations for the Swanlinbar River Special Area of Conservation (SAC).		DOE NIEA, NPWS	Mar 2015
A number of catchment wide actions also apply to this water body. These can be found on Page 8.				

UKGBNI1NW363602051		Swanlinbar River tributary	2009 Status: Good	
	Action to be taken		Action to be taken by	Target Date
1	Maintain current regulatory controls as water body status is Good or better.		DOE NIEA	Dec 2015
A number of catchment wide actions also apply to this water body. These can be found on Page 8.				

UKGBNI1NW363602017		River Erne tributary	2009 Status: Moderate	
	Action to be taken		Action to be taken by	Target Date
1	Carry out a river walk to investigate agricultural practices in the catchment.		DOE NIEA	Mar 2013
2	Assess sources of organic pollution including domestic wastewater treatment systems.		DOE NIEA	Dec 2013
3	Provide advice on protected area designations for Upper Lough Erne Special Protected Area (SPA).		DOE NIEA	Dec 2015
A number of catchment wide actions also apply to this water body. These can be found on Page 8.				

UKGBNI1NW363602038		Tamlaght Stream	2009 Status: Good	
	Action to be taken	Action to be taken by	Target Date	
1	Carry out a river walk to investigate agricultural practices in the catchment.	DOE NIEA	Mar 2013	
2	Carry out a visual inspection of WWTW at Tamlaght and investigate any downstream impact from discharge.	DOE NIEA	Mar 2013	
3	Provide advice on protected area designations for Castlecoole Estate Area of Special Scientific Interest (ASSI) located in this water body.	DOE NIEA	Dec 2015	
A number of catchment wide actions also apply to this water body. These can be found on Page 8.				

UKGBNI1NW363602035		River Erne Bellanaleck	2009 Status: Good	
	Action to be taken	Action to be taken by	Target Date	
1	Maintain current regulatory controls as water body status is Good or better.	DOE NIEA, All Stakeholders	Dec 2015	
2	Carry out monitoring and assessment to investigate algal blooms in Mill Lough.	DOE NIEA	Completed	
3	Carry out compliance assessment relating to the Prevention of Pollution (Erne System) Regulations N.I. (1994) for boats with WC facilities.	DOE NIEA	Mar 2013	
A number of catchment wide actions also apply to this water body. These can be found on Page 8.				

UKGBNI1NW363602039		River Erne Enniskillen	2009 Status: MEP	
	Action to be taken	Action to be taken by	Target Date	
1	Assess road schemes for proposed road at Cherrymount, Enniskillen and provide water pollution prevention advice to contractor.	DOE NIEA	Dec 2014	
2	Carry out pollution prevention and enforcement measures, investigate any unconsented discharges and where required ensure Water Order consent is obtained.	DOE NIEA	Mar 2013	
3	Carry out compliance assessment relating to the Prevention of Pollution (Erne System) Regulations N.I. (1994) for boats with WC facilities.	DOE NIEA	Mar 2013	
A number of catchment wide actions also apply to this water body. These can be found on Page 8.				

What other measures are being implemented in the Upper Lough Erne LMA in order to maintain and improve the water environment?

The Programme of Measures described in the North Western River Basin Management Plan (RBMP) have been categorised into two types of measures: existing and planned and supplementary. Existing and planned measures aim to ensure that existing water uses are appropriately managed and that the water environment remains at good status. Existing and planned measures include those which have been put in place to meet legal requirements. Those which apply in this LMA include:

- The Drinking Water Directive (80/778/EEC) as amended by Directive (98/83/EC);
- The Birds Directive (74/409/EEC);
- The Major Accidents Directive (96/82/EC).
- The Sewage Sludge Directive (86/278/EEC);
- The Urban Waste-water Treatment Directive (91/271/EEC);
- The Environmental Impact Assessment Directive (85/337/EEC);
- The Plant Protection Products Directive (91/414/EEC);
- The Nitrates Directive (91/676/EEC);
- The Habitats Directive (92/43/EEC); and
- The Integrated Pollution Prevention Control Directive (96/61/EC);

A number of other existing and planned measures apply in this LMA:

- Cost recovery for water use and promotion of efficient and sustainable water use;
- Protection of drinking water sources;
- Abstraction and Impoundment Control;
- Point source and diffuse source discharge control;
- Controls on physical modifications to surface waters;
- Prevention or reduction of the impact of accidental pollution incidents;
- Authorisation of discharges to groundwater;
- Priority substances control; and
- Controls on other activities impacting on water status.

Further information on existing and planned measures for each sector is available on the programme of measures section of the website.

Supplementary Measures are a number of Northern Ireland wide measures which were agreed by all relevant Departments and Agencies in Northern Ireland including DCAL, DARD, DOE, DRD, NIEA, Loughs Agency and NI Water and published as part of the RBMPs. Supplementary measures have been identified for the following sectors:

- Abstraction and flow regulation;
- Diffuse and point source (Agriculture, Collection & treatment of sewage, Urban Development, Forestry, Industry and other business, Waste);
- Freshwater Morphology and Marine Morphology;
- Invasive Alien Species and

- Other.

Progress on the implementation of these supplementary measures listed in the RBMPs will be reported to the European Commission in December 2012. This LMA action plan forms one of the supplementary measures for the North West RBD and includes a number of others where relevant.

What measures are agreed for water dependent Natura 2000 sites in unfavourable condition?

Special Areas of Conservation (Habitats Directive) and Special Protection Areas (Birds Directive) are assessed as being in favourable or unfavourable condition. These areas have been examined to determine if water dependent features are present.

There are no specific measures for the water dependent features of Slieve Beagh, Cuilcagh Mountain and Upper Lough Erne Special Areas of Conservation as there are no water related adverse activities causing the unfavourable condition assessment.

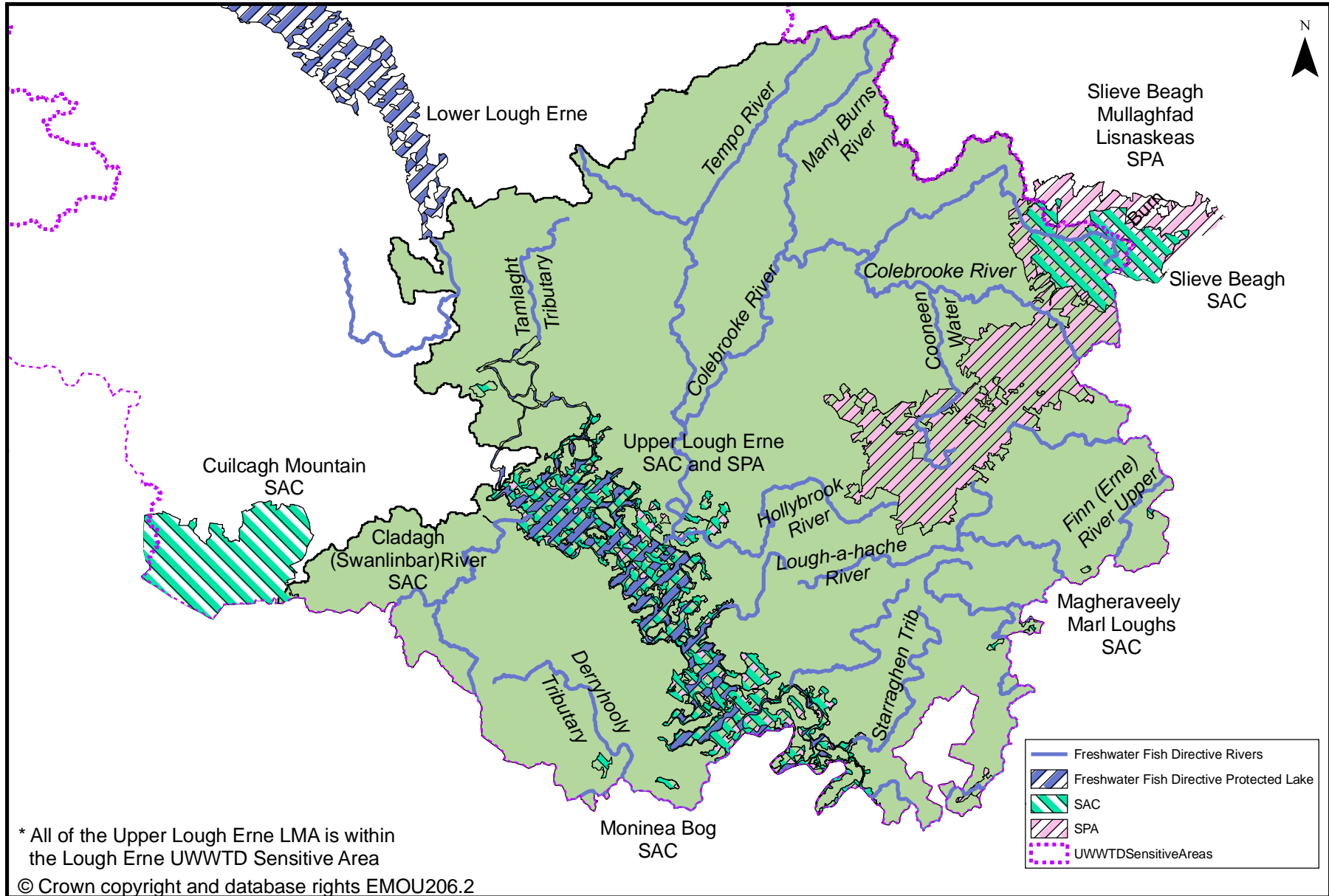
The Cladagh (Swanlinbar) River, Magheraveely Marl Lough and Moninea Bog Special Areas of Conservation have water dependent features which are in unfavourable condition.

Measures for water dependent features of Special Areas of Conservation

There are two water dependent Special Protection Areas in the Upper Lough Erne LMA. Upper Lough Erne Special Protection Area is in favourable condition and the condition of Slieve Beagh- Mullaghfad- Lisnaskea has not yet assessed. Further details on Special Areas of Conservation and Special Protection Areas in the Upper Lough Erne LMA are available in the protected areas section of the website.

This page is intentionally blank.

Map 3: Protected Areas in Upper Lough Erne LMA



Protected areas in Upper Lough Erne LMA

The LMA supports important habitats and wildlife. These areas have been designated under European Directives and require special protection. The protected areas are summarised in Table 2 and illustrated in Map 3.

Table 2: Protected areas in Upper Lough Erne LMA

Protected Area Type	Location
Waters used for the abstraction of drinking water (drinking water protected areas)	There are 16 drinking water protected areas.
<p>Areas designed to protect economically significant aquatic species</p> <p>Freshwater Fish Directive (78/659/EEC)</p> <p>Shellfish Waters Directive (79/923/EC)</p>	<p>There are approximately 317 km of river and 31 km² of lakes identified under the Freshwater Fish Directive all designated Salmonid.</p> <p>There are no designated shellfish waters.</p>
<p>Bathing Waters</p> <p>These are bathing waters identified under the Bathing Waters Directives (76/160/EEC)</p>	There are no identified bathing waters.
<p>Nutrient Sensitive Areas</p> <p>Areas designated as sensitive under the Urban Waste Water Treatment Directive (91/271/EEC) and the Nitrates Directive (91/676/EEC)</p>	<p>There is 1 Urban Waste Water Treatment Directive sensitive area: Lough Erne.</p> <p>A total territory approach has been adopted in Northern Ireland for the Nitrates Directive.</p>
<p>Areas designated for the protection of habitats or species (Natura 2000 sites)</p> <p>These are areas designated for the protection of habitats or species where the maintenance or improvement of the status of water is an important factor in their protection.</p> <p>Habitats Directive (92/43/EEC)</p> <p>Birds Directive (79/409/EEC)</p>	<p>There are 6 water dependent Special Areas of Conservation; Upper Lough Erne, Slieve Beagh, Cladagh (Swanlinbar) River, Magheraveely Marl Loughs, Cuilcagh Mountain and Moninea Bog.</p> <p>There are 2 water dependent Special Protection Areas; Upper Lough Erne and Slieve Beagh-Mullaghfad-Lisnaskea.</p>

Abbreviations

Term	Explanation
AFBI	Agri-Food and Biosciences Institute
DARD	Department of Agriculture and Rural Development
DCAL	Department of Culture, Arts and Leisure
DOE	Department of the Environment
DRD	Department of Regional Development
DWI	Drinking Water Inspectorate
EPA, Ireland	Environmental Protection Agency, Ireland
EP	Ecological Potential – the status of a heavily modified water body measured against the maximum ecological quality it could achieve given the constraints imposed upon it by those heavily modified characteristics necessary for its use. There are four classes for the status of heavily modified water bodies: good ecological potential or better (GEP), moderate ecological potential (MEP), poor ecological potential (PEP) and bad ecological potential (BEP).
GSNI	Geological Survey of Northern Ireland
IFI	Inland Fisheries Ireland
INTERREG IVA	Donegal County Council, in partnership with NIEA has been awarded funding under the European Union's European Regional Development Fund for a project aimed at helping to save the freshwater pearl mussel. The project proposes to undertake a programme of works involving the practical implementation of measures to support the restoration of the freshwater pearl mussel to favourable conservation status at designated sites.
LMA	Local Management Area
NIEA	Northern Ireland Environment Agency
NIWL	Northern Ireland Water Limited
NPWS, Ireland	National Parks and Wildlife Service, Ireland
RHAT	River Hydromorphology Assessment Technique
ROI	Republic of Ireland
WWTW	Waste Water Treatment Works

Working together to implement the Local Management Action Plan.

If you would like to get involved, find out more about the plans, or are carrying out work that will assist in protecting the water environment let us know at the Erne & Melvin Catchment Stakeholder Group meetings or by contacting the Catchment Management Officer, Deidre Spillane.

Email: Deidre.Spillane@doeni.gov.uk

Telephone: 028 6862 8882

Further details are available at www.doeni.gov.uk/niea/nw-workingtogether

Water Pollution Hotline:

***Freephone 0800 80 70 60**

This line is manned 24 hours a day, 7 days a week.

*Mobile calls are charged at standard network rates.

If you become aware of a water pollution incident please call the Water Pollution Hotline in confidence giving the location and nature of the pollution.



Our aim is to protect, conserve and promote the natural environment and built heritage for the benefit of present and future generations.

Northern Ireland Environment Agency
Water Management Unit
17 Antrim Road
Lisburn
BT28 3AL
T. (028) 9262 3004
www.doeni.gov.uk/niea