

Significant Water Management Issues

Upper Bann Local Management Area Action Plan and Update

December 2013

The Upper Bann Local Management Area (LMA) Action plan published to NIEA website

- These LMA action plans are working documents which will evolve as new projects are committed to over time during the River Basin Planning cycle
- This summary provides an update on operational actions in the LMA. Many actions are based on implementation meetings with Upper Bann Catchment Stakeholder Group members in 2012/2013
- If you, as an individual or organisation, can input additional information on actions or projects in the Upper Bann Action Plan please contact your Catchment Management Officer.

	LMA Action	Associated Action	Details of Action
1	Complete desktop study and risk analysis using available catchment data to identify areas under pressure and allow further investigations on the ground to be carried out.	Additional LMA investigative monitoring	<p>29 additional sites were monitored on the Upper Bann LMA between 21/11/2012 and the 05/12/2012 .</p> <p>Investigations involved site assessments, kick sampling and invertebrate identification both in field and in lab.</p> <p>The additional sampling helped in the identification of 14 river walks within the LMA.</p>
2	Carry out monitoring and assessment to identify and address pressures	Data analysis	<p>Data scrutiny completed by WMU water quality planners resulting in a comprehensive desktop study and risk analysis. 14 river walks identified.</p> <p>8 river walks completed between February and June 2013 in the</p>

LMA Action	Associated Action	Details of Action			
throughout the Upper Bann LMA.	River walks	<u>following areas :</u>			
			River Name	Number of Walks	Results and Action
		1	Cusher River	1	(i)Excessive amounts of sewage fungus found at Captains Bridge downstream of a farm. Reported to NIEA Pollution Hotline. Landowner breached. (ii) Sewage Fungus Discharge entering waterway from a domestic Septic Tank. Water Quality Inspector to follow this up. (iii) Cow yard adjacent to the river with slurry entering the waterway. Reported to NIEA Agricultural Regulations team. This has been followed up and the landowner has now rectified the problem.
2	Ballybay River Upstream and Downstream of	1	Historical problems with Industrial Discharge however the Factory is no longer in operation. No discharge present and no action required.		

LMA Action		Associated Action	Details of Action			
				Industrial Discharge.		
			3	Ballybay River	1	High suspended solids in river due to soil erosion on adjacent banks.
			4	Eel Burn	1	(i)Sewage effluent discharging to waterway from a farm. Water Quality Inspectors and Agricultural Regulations Team following up. (ii) Slurry spreading <10m from the waterway. Agricultural regulations team informed and following this up.
			5	Corbet Lough	1	Survey completed of all waterways entering the Lough. No actions required.
			6	Ballybay	1	Stakeholder reported a recurring discharge from a carpet factory at the Garvaghy Road bridge. On inspection the discharge was clear. This is an IPRI site and is regularly monitored by their in house Environmental Officer.
			7	Tulliorior Trib	1	Giant Hogweed present on Riverbanks. No evidence of pollution.
			8	Cusher	1	Traces of sewage found in river and water

LMA Action		Associated Action	Details of Action	
			Feeder Stream	appeared grey in colour. Excessive amount of silage effluent had been dumped over a bank and effluent was draining into the waterway. Reported to Pollution Hotline and followed up by AGREGs Team.
3	Carry out compliance assessment on discharges from WWTW within Catchment		<p>Compliance Assessment Results for 2012 is as follows:</p> <p>Results due for :</p> <ul style="list-style-type: none"> (i) Tandragee WWTW (ii) Gilford 	
4	Carry out compliance assessment on consented industrial		<p>Compliance Assessment results for 2012 is as follows:</p> <ul style="list-style-type: none"> ● 37 sites have been sampled 148 times. ● 7 sites failed to comply. 	

	LMA Action	Associated Action	Details of Action
	discharges within catchment		
5	Carry out fish monitoring and assessment for annual report on catchment status and WFD fish monitoring programme.		This report can be found on: www.dcalni.gov.uk/digest of fisheries statistics.
6	Conduct invasive alien species recording during river walks.		During the course of river walks any sightings or suspected sightings of invasive alien species are collated and reported to Invasive Species Ireland.
7	Raise awareness and promote the		'Look after those Drumlin Lakes' article published in farming life in March 2013. Corbet Lough Restoration programme organised by CAFRE took

	LMA Action	Associated Action	Details of Action
	benefits of effective farm nutrient and waste management within the LMA		place 12 th March 2013. The programme was aimed at landowners local to Corbet Lough and gave advice and information on farm waste disposal and the problems encountered with slurry spreading adjacent to drumlin lakes.
8	Promote the control of invasive alien species on farmland		NIEA Natural Heritage has liaised with a range of individuals and groups and provided training and advice in relation to invasive species control.
9	Upgrading of WWTW's in LMA		WWTW Upgrade complete in the following: WWTW at Derrytrasna
11	Conduct a water resource assessment to inform an ongoing review of abstraction licences within Northern		The water resource assessment has been completed for Upper Bann LMA. The agency will continue to monitor flows within the catchment through a combination of the river flow gauging network, spot gauging and modelling. Existing licence holders will also be required to make monitoring returns on their abstracted volumes.

LMA Action		Associated Action	Details of Action
	Ireland.		
12	Encourage riparian zone management with an aim to improve biodiversity and minimise sedimentation through practical management measures on farms.		A measure within the Nitrates Action Programme is that all farms must carry out crop and soil management to minimise soil erosion and nutrient runoff. This is verified during cross-compliance visits
13	Promote the NIEA Water Pollution Hotline through		Signs erected at: Corbet Lough, Banbridge. Upper and Lower Car Parks at Clare Glen in Tandragee.

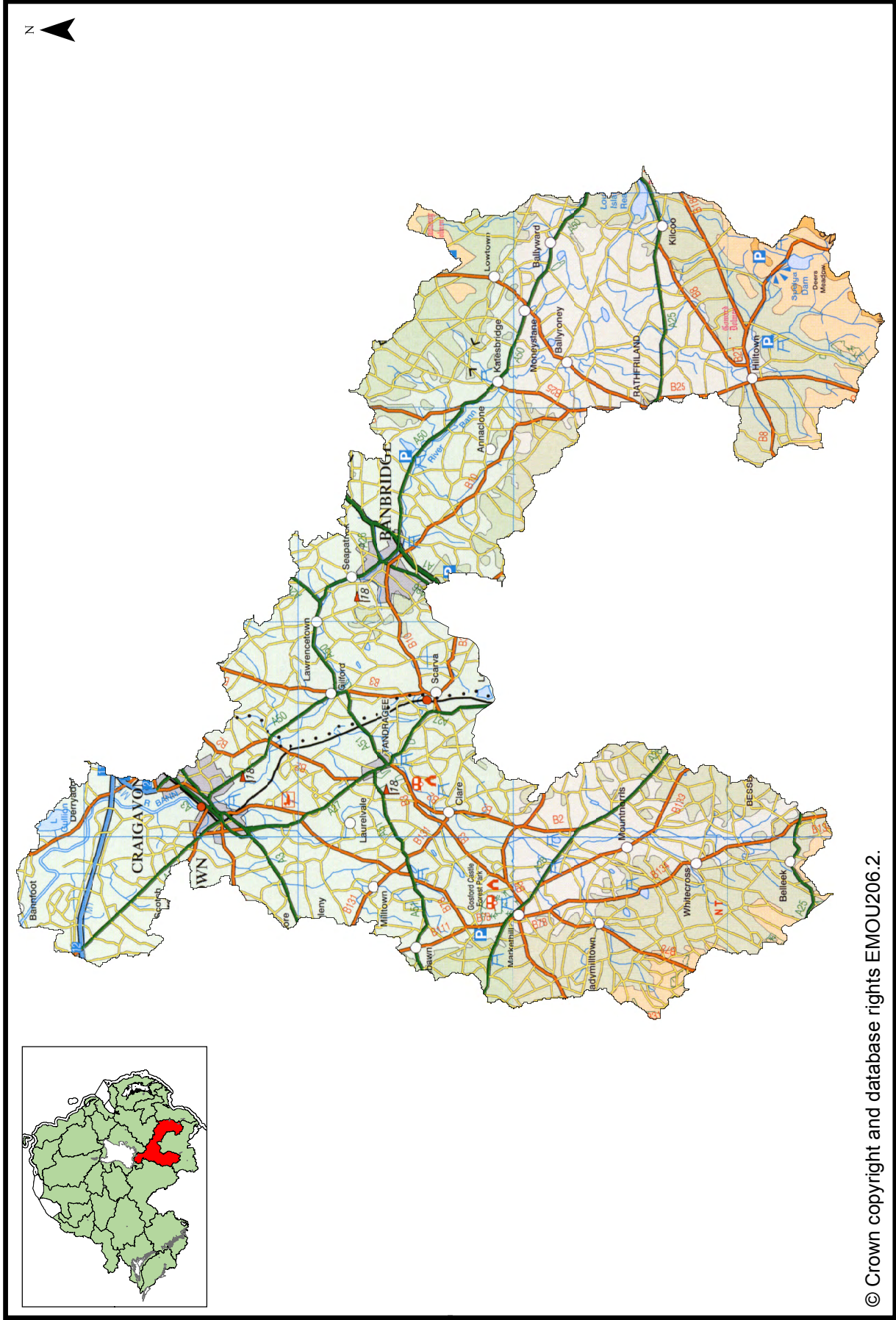
	LMA Action	Associated Action	Details of Action
	increased advertising, promotion and waterside signage throughout the LMA.		
15	Organise two CSG meetings per year to provide an open forum for discussion on water issues and encourage involvement in developing and implementing the Local Management Area Plan.		Spring Meeting held 16 May 2013 in The Old Town Hall, Banbridge. Autumn Meeting held 14 Nov 2013 in Cohannon Inn. Presentations and note of meetings can be found on http://www.doeni.gov.uk/niea/water-home/wfd/public_partic_3/catchment_stakeholder_groups/upper_n_eagh_bann.htm



UPPER BANN
Local Management Area



Map 1: Upper Bann Local Management Area



© Crown copyright and database rights EMOU206.2.

Introduction

River Basin Management Plans were published in December 2009. The plans describe where the water environment needs to be protected or improved, the timeframe to make these improvements and how that can be achieved. The plans will be implemented through Local Management Areas (LMAs) during the 2009 to 2015 planning cycle. This Upper Bann Local Management Area Action Plan is one of a series of action plans that have been developed for the 26 LMAs across the Neagh Bann, North Western and North Eastern River Basin Districts. The action plan details local measures identified to improve the water environment.

Upper Bann Local Management Area

The Upper Bann LMA (Map 1), part of the Neagh Bann River Basin District, drains into Lough Neagh at Bannfoot and covers an area of 397 km². The main river is the Upper Bann, with the Cusher River as a major tributary. The Upper Bann rises in the Mourne Mountains from several tributaries including the Leitrim River, the Muddock River, the Rocky River and the Upper Bann reach. It flows northwards through Banbridge and joins with the Cusher south of Portadown.

The main towns in Upper Bann are Craigavon and Banbridge. There are also many small towns in the area including Tandragee, Markethill and Rathfriland. The main land use in the area is given over to improved grassland plus some arable horticulture and forestry. The river also supports a range of recreational activities such as angling, walking and canoeing.

The twin forks of the upper reaches of the Upper Bann and the Cusher Rivers border on the Mourne Area of Outstanding Natural Beauty and the Ring of Gullion Area of Outstanding Natural Beauty respectively.

Protected areas in Upper Bann LMA

The LMA supports a wide variety of natural habitats and wildlife. Several of these areas have been designated under European Directives and require special protection. Details of the protected areas are summarised in a table at the end of this report.

What is the status of the water environment in the Upper Bann LMA?

100% of surface water bodies in Upper Bann LMA have been classified as less than good status (Map 2). Many of the rivers failed to achieve good status due to elevated levels of phosphorus and impacted invertebrate communities.

Groundwaters (underground water) interact with the surface waters around them, thus the quality and quantity of an area's groundwater can affect the surface waters. There are 3 groundwater bodies within Upper Bann LMA – Aughnacloy, Tandragee and Neagh. All three are currently achieving good status.

In this LMA the main impact in rivers was seen in invertebrate and macrophyte suppression. The rivers affected were: Bann, Annagh, Cusher, Leitrim, Corcrain, Creggan, Glebe, Mowhan, Drumadonnell and Muddock. 7 water bodies were identified as being affected by changes to morphology (physical habitat). The main rivers affected were: River Bann, River Cusher and the Gosford River Cusher.

The water environment in Northern Ireland has been impacted by the introduction of invasive alien species. Some species which have already become established throughout this LMA are:

- Snowberry (*Symphoricarpos albus*)
- Giant Hogweed (*Heracleum mantegazzianum*)
- Japanese Knotweed (*Fallopia japonica*)
- Himalayan Balsam (*Impatiens glandulifera*)

This page is intentionally blank

Map 2: 2009 status of surface water bodies in Upper Bann LMA

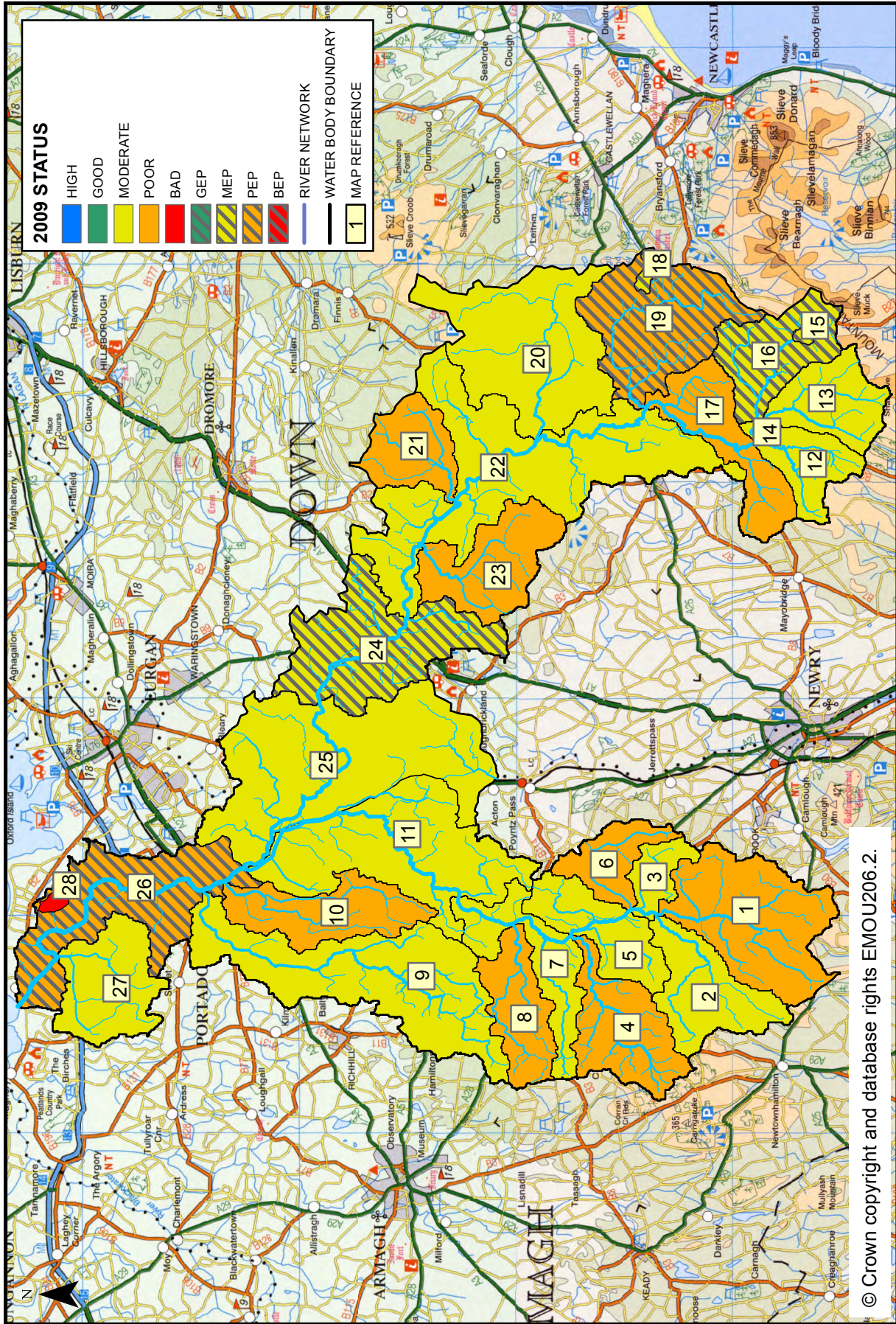


Table 1: 2009 status and proposed objectives

Map Reference	Water Body Code	Water Body Name	2009 Status	2015 Objective	Page Number
1	UKGBNI1NB030308114	Cusher River	Poor	Moderate	11
2	UKGBNI1NB030308113	Creggan River	Moderate	Moderate	12
3	UKGBNI1NB030308092	Cusher River	Moderate	Moderate	12
4	UKGBNI1NB030308120	Mowhan River	Poor	Moderate	13
5	UKGBNI1NB030308094	Cusher River	Moderate	Moderate	13
6	UKGBNI1NB030308118	Cusher River at Lough Gilly	Poor	Moderate	14
7	UKGBNI1NB030308093	Cusher River	Moderate	Moderate	14
8	UKGBNI1NB030308119	Gosford River Cusher	Poor	Moderate	15
9	UKGBNI1NB030308110	Corcrair River	Moderate	Moderate	16
10	UKGBNI1NB030308091	Annagh River	Poor	Moderate	17
11	UKGBNI1NB030308107	Cusher River	Moderate	Moderate	18
12	UKGBNI1NB030308102	Leitrim River	Moderate	Moderate	18
13	UKGBNI1NB030308101	Rocky River	Moderate	Good	19
14	UKGBNI1NB030308088	River Bann	Moderate	Good	19
15	UKGBNI3NB0026	Spelga Dam	MEP	MEP	19
16	UKGBNI1NB030308089	River Bann Upper	MEP	GEP	20
17	UKGBNI1NB030308100	River Bann	Poor	Moderate	20
18	UKGBNI3NB0017	Lough Island Reavy	MEP	MEP	21
19	UKGBNI1NB030308188	Muddock River	PEP	MEP	21
20	UKGBNI1NB030308187	Drumadonnell River	Moderate	Moderate	22
21	UKGBNI1NB030308186	Balloollymore Burn Bann	Poor	Moderate	22
22	UKGBNI1NB030308184	River Bann	Moderate	Moderate	23

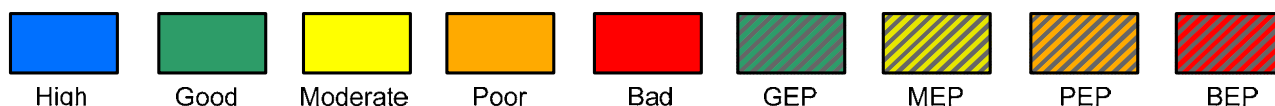
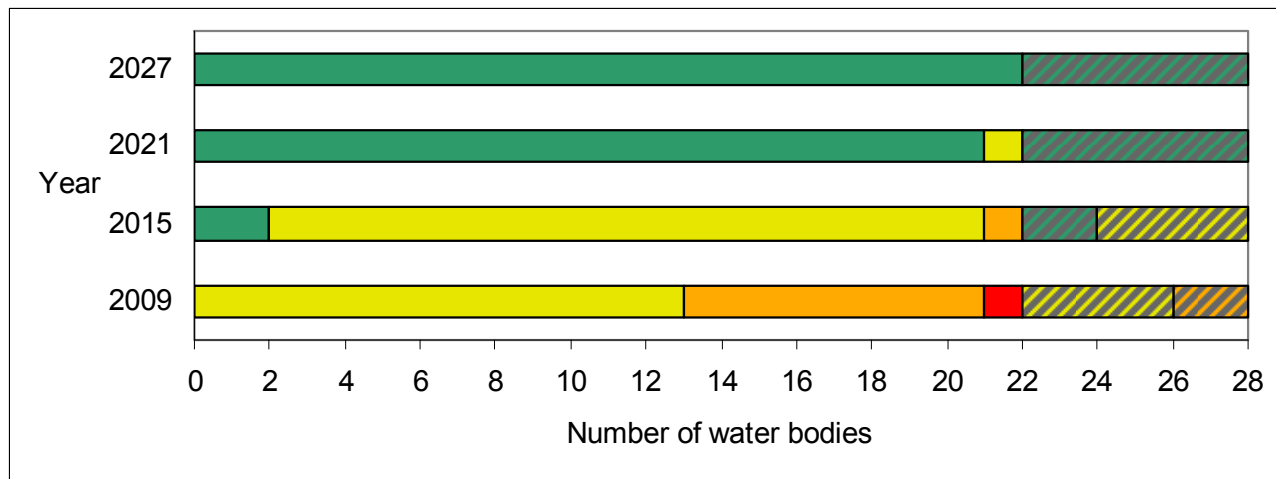
Table 1: 2009 status and proposed objectives (continued)

Map Reference	Water Body Code	Water Body Name	2009 Status	2015 Objective	Page Number
23	UKGBNI1NB030308117	Glebe Burn Bann	Poor	Moderate	24
24	UKGBNI1NB030308197	River Bann	MEP	GEP	24
25	UKGBNI1NB030308189	River Bann	Moderate	Moderate	25
26	UKGBNI1NB030308103	River Bann Bannfoot	PEP	MEP	25
27	UKGBNI1NB030308105	Farlough River Bann	Moderate	Moderate	26
28	UKGBNI3NB0018	Lough Gullion	Bad	Poor	26

What improvements do we plan to achieve?

We have set environmental objectives to deliver improvements as shown below. We aim to achieve good status or better in 14% of our surface waters and maintain good status in 100% of our groundwaters.

Figure 1: 2009 status and proposed objectives for surface waters in Upper Bann LMA



How are we going to maintain and improve the water environment in Upper Bann LMA?

There are a number of measures which will be implemented in Upper Bann LMA in order to maintain and improve the water environment. The list of actions that follows include actions that apply throughout the LMA and also actions that apply to individual water bodies.

The actions below apply throughout the LMA.

	Action to be taken	Action to be taken by	Target Date
1	Promote public participation in the river basin planning process by hosting bi-annual Catchment Stakeholder Group meetings, holding bi-lateral meetings with groups and individuals and the generation of e-zines.	DOE NIEA	Dec 2015
2	Promote public participation by raising awareness of Rivers Trusts.	DOE NIEA	Dec 2015
3	Promote the NIEA Water Pollution Hotline through increased advertising, promotion and waterside signage at targeted sites throughout the LMA.	DOE NIEA	Mar 2014
4	Support local environmental initiatives which improve the water environment.	DOE NIEA	Dec 2015
5	Support pollution prevention campaigns such as 'Reduce Reuse Recycle', 'Bag It & Bin It', 'Stop and Think (Not Down the Sink)' to increase awareness of key issues.	DOE NIEA	Dec 2015
6	Review Rivers Agency's annual watercourse maintenance program to assess for potential ecological impacts within the LMA.	DOE NIEA, DARD Rivers Agency	Dec 2014
7	Conduct a water resource assessment to inform an ongoing review of abstraction licences within Northern Ireland.	DOE NIEA	Mar 2014
8	Conduct invasive alien species recording during river walks and raise awareness on how to prevent the spread of invasive alien species within the LMA.	DOE NIEA	Mar 2014
9	Complete the phosphorus nutrient budget work for Northern Ireland to establish nutrient inputs from different sectors.	AFBI, DOE NIEA	Mar 2014
10	Review the relevance of nutrient budget in the context of this LMA to establish relative nutrient inputs from agriculture, industry and sewage discharges.	DOE NIEA	Mar 2014
11	Raise awareness and promote the benefits of effective pollution control and farm nutrient and waste management.	DOE NIEA, DARD Countryside Management Branch	Mar 2015
12	Encourage riparian zone management with an aim to improve biodiversity and minimise sedimentation through practical management measures on farms within the LMA.	DOE NIEA, DARD Countryside Management Branch	Mar 2014
13	Ensure that licences for new and existing hydro power developments are compliant with the Water Framework Directive and Habitats Regulations to support good ecological status and carry out risk based compliance visits.	DOE NIEA	Mar 2014
14	Promote best practice in the use of pesticides on farms within the LMA.	DOE NIEA, DARD Countryside Management Branch	Dec 2015

	Action to be taken	Action to be taken by	Target Date
15	Develop leaflets and articles to promote effective farm nutrient and waste management within the LMA.	DOE NIEA, DARD Countryside Management Branch	Dec 2015
16	Promote the control of invasive alien species on farmland within the LMA.	DOE NIEA, DARD Countryside Management Branch	Dec 2015
17	Review of groundwater abstraction and planning applications where necessary.	DOE NIEA	Dec 2015
18	Observation of nitrate trends in groundwater and liaison with research partners for further investigation.	DOE NIEA	Dec 2015
19	Highlight external funding opportunities for water management projects to local partners including the Water Quality Improvement Grant.	DOE NIEA	Mar 2014
20	Complete desktop study and risk analysis using available catchment data to identify areas under pressure and allow further investigations on the ground to be carried out . Initial desktop analysis is complete and work is ongoing.	DOE NIEA	Mar 2014
21	Promote public participation and raise awareness of biodiversity conservation and enhancement in the form of an Action for Biodiversity project within Upper Bann LMA.	INTERREG Action for Biodiversity Special EU Programmes Body	Mar 2014
22	Promote public participation by working with the NI Rivers Trust development officer and support the development of Rivers Trusts within LMA.	DOE NIEA, The Rivers Trust	Mar 2014
23	Carry out monitoring and assessment to collate inventory of invasive species, obtain information from Centre for Environmental Data and Recording (CEDAR) and Invasive Species Ireland.	DOE NIEA	Mar 2014
24	Carry out compliance assessment in relation to IPRI (Industrial Pollution and Radiochemical Inspectorate) sites.	DOE NIEA	Mar 2014
25	Carry out monitoring and assessment in the form of a Septic Tank Research Project on test sites within the Upper Bann LMA.	AFBI, DOE NIEA	Mar 2015
26	Provide advice on protected area designations in relation to Annex 1 Habitat, Annex 2 Species and Annex 5 species e.g Salmon, Otter, Lamprey and Ranunculus Rivers.	DOE NIEA	Mar 2015
27	Carry out agricultural advisory site visits where identified as an issue through river walks, spot checks or as identified by stakeholders.	DOE NIEA	Mar 2015
28	Offer a farm nutrient and waste management advisory visit to farmers following a pollution incident (on referral by NIEA).	DOE NIEA, DARD	Mar 2015

The actions below apply to individual water bodies in the LMA. The 2009 status or ecological potential is shown for each water body.

UKGBNI1NB030308114		Cusher River	2009 Status: Poor	
	Action to be taken		Action to be taken by	Target Date
1	Conduct biological investigations to assess aquatic invertebrates at Captains Bridge, feeder at Tullyah, feeder at Lissaraw, feeder at Tullywinny, Carricknanny, and Carrickgallogly.		DOE NIEA	Completed
2	Carry out monitoring and assessment of aquatic plants in Cusher River at Captains Bridge.		DOE NIEA	Completed
3	Assess forestry operations at Outleckan Wood. Engage with forestry technical staff to ensure appropriate mitigation measures are included in felling plans to reduce impacts on water quality.		DOE NIEA	Mar 2014
4	Promote the NIEA Water Pollution Hotline through increased advertising, promotion and waterside signage at Captains Bridge, Whitecross and Blackwater Bridge.		DOE NIEA	Mar 2014
5	Assess significance of sheep dip usage and review groundwater authorisations where appropriate within this water body.		DOE NIEA	Mar 2014
6	Carry out compliance assessment of consented discharges within the water body.		DOE NIEA	Dec 2014
7	Carry out a river walk between Cusher River at Carrickgallogly and Cusher River at Carricknanny to investigate invertebrate suppression as observed by biological survey in Autumn 2012.		DOE NIEA	Completed
8	Carry out a visual inspection of WWTW at Ballymoyer and Drumilly.		DOE NIEA	Completed

[A number of catchment wide actions also apply to this water body. These can be found on Page J.](#)

UKGBNI1NB030308113		Creggan River	2009 Status: Moderate	
	Action to be taken		Action to be taken by	Target Date
1	Carry out monitoring and assessment of aquatic plants in Whitecross Stream at Whitecross.		DOE NIEA	Completed
2	Carry out compliance assessment of consented discharges within the water body.		DOE NIEA	Dec 2014
3	Assess forestry operations at Cold Brae Wood and Glenny's Hill. Engage with forestry technical staff to ensure appropriate mitigation measures are included in felling plans to reduce impacts on water quality.		DOE NIEA	Mar 2014
4	Assess significance of sheep dip usage and review groundwater authorisations where appropriate within this water body.		DOE NIEA	Mar 2014

[A number of catchment wide actions also apply to this water body. These can be found on Page J.](#)

UKGBNI1NB030308092		Cusher River	2009 Status: Moderate	
	Action to be taken		Action to be taken by	Target Date
1	Carry out monitoring and assessment of aquatic plants in Cusher River at McCreedys Bridge.		DOE NIEA	Completed

[A number of catchment wide actions also apply to this water body. These can be found on Page J.](#)

UKGBNI1NB030308120		Mowhan River	2009 Status: Poor	
	Action to be taken		Action to be taken by	Target Date
1	Conduct biological investigations to assess aquatic invertebrates in Clady Water Rd Bridge, Clady Milltown and Mowhan River at Mowhan Bridge.		DOE NIEA	Completed
2	Carry out monitoring and assessment to investigate failure of aquatic plants in Mowhan River at Derrycughan.		DOE NIEA	Completed
3	Carry out monitoring and assessment to establish causes of dissolved oxygen suppression within water body.		DOE NIEA	Dec 2014
4	Carry out a visual inspection of WWTW at Kilmachugh.		DOE NIEA	Completed
5	Carry out compliance assessment of consented discharges within the water body.		DOE NIEA	Dec 2014
6	Assess forestry operations at Carn Hill. Engage with forestry technical staff to ensure appropriate mitigation measures are included in felling plans to reduce impacts on water quality.		DOE NIEA, DARD Forest Service	Mar 2014
7	Assess significance of sheep dip usage and review groundwater authorisations where appropriate within this water body.		DOE NIEA	Mar 2014

[A number of catchment wide actions also apply to this water body. These can be found on Page J.](#)

UKGBNI1NB030308094		Cusher River	2009 Status: Moderate	
	Action to be taken		Action to be taken by	Target Date
1	Carry out monitoring and assessment of aquatic plants in Cusher River Tributary at Mountnorris.		DOE NIEA	Completed
2	Carry out a visual inspection of WWTW at Mullaghmore.		DOE NIEA	Completed
3	Carry out compliance assessment of consented discharges within the water body.		DOE NIEA	Mar 2014
4	Promote the NIEA Water Pollution Hotline through increased advertising, promotion and waterside signage at Glenanne Road Bridge.		DOE NIEA	Mar 2014
5	Assess significance of sheep dip usage and review groundwater authorisations where appropriate within this water body.		DOE NIEA	Mar 2014

[A number of catchment wide actions also apply to this water body. These can be found on Page J.](#)

UKGBNI1NB030308118		Cusher River at Lough Gilly	2009 Status: Poor	
	Action to be taken		Action to be taken by	Target Date
1	Conduct biological investigations to assess aquatic invertebrates at Road bridge Upstream of Lough Gilly and Road Bridge at Ballydogherty.		DOE NIEA	Completed
2	Carry out monitoring and assessment of aquatic plants in Loughgilly River at Ballygorman.		DOE NIEA	Completed
3	Assess significance of sheep dip usage and review groundwater authorisations where appropriate within this water body.		DOE NIEA	Mar 2014
4	Carry out a river walk between Cusher feeder stream at Ballydogherty Rd Bridge and Cusher River at Bolton Bridge to investigate the cause of invertebrate suppression and high levels of sewage fungus as observed by biological survey in Autumn 2012.		DOE NIEA	Mar 2014
<p>A number of catchment wide actions also apply to this water body. These can be found on Page J.</p>				

UKGBNI1NB030308093		Cusher River	2009 Status: Moderate	
	Action to be taken		Action to be taken by	Target Date
1	Assess significance of sheep dip usage and review groundwater authorisations where appropriate within this water body.		DOE NIEA	Mar 2014
<p>A number of catchment wide actions also apply to this water body. These can be found on Page J.</p>				

UKGBNI1NB030308119		Gosford River Cusher	2009 Status: Poor	
	Action to be taken		Action to be taken by	Target Date
1	Carry out compliance assessment of consented discharges within the water body.		DOE NIEA	Dec 2014
2	Assess forestry operations at Gosford Forest Park. Engage with forestry technical staff to ensure appropriate mitigation measures are included in felling plans to reduce impacts on water quality.		DOE NIEA, DARD Forest Service	Mar 2014
3	Carry out a river walk at Glassdrummond, McKinleys Hill to assess sources of organic pollution from agriculture as desktop analysis shows high levels of phosphate within this area.		DOE NIEA	Mar 2014
4	Investigate identified water quality impacts at outfall of Surface Water Drainage System at housing development in Markethill. Desktop analysis shows high levels of phosphate in soil and receiving water.		DOE NIEA, NIWL	Mar 2014
5	Carry out full RHAT assessment within this water body.		DOE NIEA	Mar 2014

[A number of catchment wide actions also apply to this water body. These can be found on Page J.](#)

UKGBNI1NB030308110		Corcrain River	2009 Status: Moderate	
	Action to be taken		Action to be taken by	Target Date
1	Carry out a river walk between Ballybay at Milltown and Ballybay at Ballybreagh Road Bridge to investigate invertebrate suppression as observed by biological survey in Autumn 2012.		DOE NIEA	Mar 2014
2	Carry out a river walk at Garvaghy Bridge to investigate recurrent pollution problems.		DOE NIEA	Mar 2014
3	Carry out monitoring and assessment of aquatic plants in Corcrain River at Obins Street Portadown.		DOE NIEA	Completed
4	Carry out a visual inspection of WWTW Milltown Agory, Aghory, Marlacoo Road and Ballymacauley.		DOE NIEA	Completed
5	Carry out compliance assessment of consented discharges within the water body.		DOE NIEA	Dec 2014
6	Promote the NIEA Water Pollution Hotline through increased advertising, promotion and waterside signage at Peoples Park Portadown.		DOE NIEA, Craigavon BC	Mar 2015
7	Assess significance of sheep dip usage and review groundwater authorisations where appropriate within this water body.		DOE NIEA	Mar 2014
8	Carry out a river walk on Ballybay River between upstream and downstream of industrial discharge to investigate invertebrate suppression as observed by biological survey in Autumn 2012.		DOE NIEA	Mar 2014
9	Carry out a river walk between Ballybay River at Ballintaggart Road Bridge and Ballybay at Ballybay Bridge to investigate invertebrate suppression as observed by biological survey in Autumn 2012.		DOE NIEA	Mar 2014

[A number of catchment wide actions also apply to this water body. These can be found on Page J.](#)

UKGBNI1NB030308091		Annagh River	2009 Status: Poor	
	Action to be taken		Action to be taken by	Target Date
1	Conduct biological investigations to assess aquatic invertebrates in Annagh feeders at Lisavague and Laurelvale and Annagh River at Dawsons Grove to determine the extent of ecological impact of upstream agricultural activity and suspected pollution pressures.		DOE NIEA	Completed
2	Carry out monitoring and assessment of aquatic plants in Annagh River at Maghon.		DOE NIEA	Completed
3	Carry out a visual inspection of WWTW at Laurelvale Road.		DOE NIEA	Completed
4	Carry out compliance assessment of consented discharges within the water body.		DOE NIEA	Mar 2014
5	Assess significance of sheep dip usage and review groundwater authorisations where appropriate within this water body.		DOE NIEA	Mar 2014
6	Carry out a river walk between Annagh River at Dawsons Grove and Annagh River at WWTW to investigate the cause of invertebrate suppression as observed by biological survey in Autumn 2012.		DOE NIEA	Mar 2014
7	Carry out a river walk between Annagh River at Lisavague Road Bridge and Annagh River at Cornasreeb Road Bridge to investigate the cause of invertebrate suppression and high quantity of Sewage Fungus observed during biological survey in Autumn 2012.		DOE NIEA	Mar 2014

[A number of catchment wide actions also apply to this water body. These can be found on Page J.](#)

UKGBNI1NB030308107		Cusher River	2009 Status: Moderate	
	Action to be taken		Action to be taken by	Target Date
1	Carry out a river walk upstream of Clare Glen at Clare Village to investigate recurring pollution reports and failures in soluble reactive phosphate and dissolved oxygen levels.		DOE NIEA	Mar 2014
2	Carry out monitoring and assessment of aquatic plants in Cusher River at Knock Bridge.		DOE NIEA	Completed
3	Carry out a visual inspection of WWTW at Ballymore and Portadown Road.		DOE NIEA	Completed
4	Carry out compliance assessment of Tandragee WWTW.		DOE NIEA	Dec 2014
5	Carry out compliance assessment of consented discharges within the water body.		DOE NIEA	Dec 2013
6	Promote the NIEA Water Pollution Hotline through increased advertising, promotion and waterside signage at river access in car park at Clare Glen Tandragee.		DOE NIEA	Mar 2014
7	Assess significance of sheep dip usage and review groundwater authorisations where appropriate within this water body.		DOE NIEA	Mar 2014

[A number of catchment wide actions also apply to this water body. These can be found on Page J.](#)

UKGBNI1NB030308102		Leitrim River	2009 Status: Moderate	
	Action to be taken		Action to be taken by	Target Date
1	Carry out monitoring and assessment of aquatic plants in Leitrim River at Leitrim Bridge.		DOE NIEA	Completed
2	Assess significance of sheep dip usage and review groundwater authorisations where appropriate within this water body.		DOE NIEA	Mar 2014
3	Assess forestry operations within Rostrevor Forest. Engage with forestry technical staff to ensure appropriate mitigation measures are included in felling plans to reduce impacts on water quality.		DOE NIEA	Mar 2014

[A number of catchment wide actions also apply to this water body. These can be found on Page J.](#)

UKGBNI1NB030308101		Rocky River	2009 Status: Moderate	
	Action to be taken		Action to be taken by	Target Date
1	Carry out monitoring and assessment of aquatic plants at Rocky River at Rocky River Bridge.		DOE NIEA	Completed
2	Assess forestry operations within Rostrevor Forest. Engage with forestry technical staff to ensure appropriate mitigation measures are included in felling plans to reduce impacts on water quality.		DOE NIEA	Mar 2014
3	Carry out fish monitoring and assessment in Rocky River at Rocky River Bridge.		DOE NIEA, AFBI	Completed

[A number of catchment wide actions also apply to this water body. These can be found on Page J.](#)

UKGBNI1NB030308088		River Bann	2009 Status: Moderate	
	Action to be taken		Action to be taken by	Target Date
1	Carry out compliance assessment of consented discharges within the water body.		DOE NIEA	Mar 2014
2	Promote the NIEA Water Pollution Hotline through increased advertising, promotion and waterside signage at the ford at Hilltown/ Leitrim Bridge.		DOE NIEA	Mar 2014

[A number of catchment wide actions also apply to this water body. These can be found on Page J.](#)

UKGBNI3NB0026		Spelga Dam	2009 Status: MEP	
	Action to be taken		Action to be taken by	Target Date
1	Assess sources of organic pollution from agriculture and on-site wastewater treatment systems within lake catchment as water body fails to achieve good status for aquatic plants.		DOE NIEA	Mar 2015
2	Assess forestry operations in forest area adjacent to Spelga Dam. Engage with forestry technical staff to ensure appropriate mitigation measures are included in felling plans to reduce impacts on water quality.		DOE NIEA, DARD Forest Service	Mar 2014
3	Investigate feasibility and practicality of implementing morphological mitigation measures as recommended by the Heavily Modified Water Bodies report.		DOE NIEA, NIWL	Mar 2014

[A number of catchment wide actions also apply to this water body. These can be found on Page J.](#)

UKGBNI1NB030308089		River Bann Upper	2009 Status: MEP	
	Action to be taken		Action to be taken by	Target Date
1	Carry out monitoring and assessment of aquatic plants in Kinahalla River above New Bridge.		DOE NIEA	Completed
2	Assess forestry operations in forest area adjacent to Spelga Dam. Engage with forestry technical staff to ensure appropriate mitigation measures are included in felling plans to reduce impacts on water quality.		DOE NIEA	Mar 2014
3	Assess significance of sheep dip usage and review groundwater authorisations where appropriate within this water body.		DOE NIEA	Mar 2014
4	Investigate feasibility and practicality of implementing morphological mitigation measures as recommended by the Heavily Modified Water Bodies report.		DOE NIEA	Mar 2015
5	Identification of contamination risks from 'source to tap' through the development of drinking water safety plans.		NIWL	Mar 2015
6	Continue to monitor mitigation measures through Drinking Water Inspectorate regulatory processes.		DOE DWI	Mar 2015
7	Support local measures that will improve water quality, in particular, reduction in the presence of pesticides and the levels of organic matter in raw water which cause implications for water treatment.		DOE DWI	Mar 2015

[A number of catchment wide actions also apply to this water body. These can be found on Page J.](#)

UKGBNI1NB030308100		River Bann	2009 Status: Poor	
	Action to be taken		Action to be taken by	Target Date
1	Conduct biological investigations to assess aquatic invertebrates upstream and downstream of Hilltown WWTW.		DOE NIEA	Completed
2	Carry out monitoring and assessment of aquatic plants in Upper Bann at McCombs Bridge and Leitrim Road Lane.		DOE NIEA	Completed
3	Assess significance of sheep dip usage and review groundwater authorisations where appropriate within this water body.		DOE NIEA	Mar 2014
4	Promote the NIEA Water Pollution Hotline through increased advertising, promotion and waterside signage adjacent to Clonduff and Rathfriland Angling Club signage at Mill Road Hilltown.		DOE NIEA	Mar 2014
5	Carry out compliance assessment of consented discharges within the water body.		DOE NIEA	Dec 2014

[A number of catchment wide actions also apply to this water body. These can be found on Page J.](#)

UKGBNI3NB0017		Lough Island Reavy	2009 Status: MEP	
	Action to be taken	Action to be taken by	Target Date	
1	Assess sources of organic pollution from agriculture and on-site wastewater treatment systems within lake catchment as water body fails to achieve good status for phytoplankton - see associated actions within Muddock River Waterbody 8188.	DOE NIEA	Mar 2014	
2	Investigate feasibility and practicality of implementing morphological mitigation measures as recommended by the Heavily Modified Water Body report.	DOE NIEA, NIWL	Mar 2015	
A number of catchment wide actions also apply to this water body. These can be found on Page J.				

UKGBNI1NB030308188		Muddock River	2009 Status: PEP	
	Action to be taken	Action to be taken by	Target Date	
1	Carry out monitoring and assessment to establish extent of dissolved oxygen suppression within the water body.	DOE NIEA	Dec 2014	
2	Carry out monitoring and assessment of aquatic plants in Muddock River at Muddock Bridge.	DOE NIEA	Completed	
3	Carry out a visual inspection of WWTW at St. John's Terrace.	DOE NIEA	Completed	
4	Carry out compliance assessment of consented discharges within the water body.	DOE NIEA	Dec 2014	
5	Assess significance of sheep dip usage and review groundwater authorisations where appropriate within this water body.	DOE NIEA	Mar 2014	
6	Investigate feasibility and practicality of implementing morphological mitigation measures as recommended by the Heavily Modified Water Bodies Report.	DOE NIEA, NIWL	Mar 2015	
7	Identification of contamination risks from 'source to tap' through the development of drinking water safety plans.	NIWL	Mar 2015	
8	Continue to monitor mitigation measures through Drinking Water Inspectorate regulatory processes.	DOE DWI	Mar 2015	
9	Support local measures that will improve water quality, in particular, reduction in the presence of pesticides and the levels of organic matter in raw water which cause implications for water treatment.	DOE DWI	Mar 2015	
A number of catchment wide actions also apply to this water body. These can be found on Page J.				

UKGBNI1NB030308187		Drumadonnell River	2009 Status: Moderate	
	Action to be taken		Action to be taken by	Target Date
1	Carry out monitoring and assessment to establish the extent of dissolved oxygen suppression within the water body.		DOE NIEA	Dec 2014
2	Carry out monitoring and assessment of aquatic plants in Drumadonnell River at Ballyronee Road.		DOE NIEA	Completed
3	Carry out a visual inspection of WWTW at Manse Road.		DOE NIEA	Mar 2014
4	Carry out compliance assessment of consented discharges within the water body.		DOE NIEA	Dec 2014
5	Assess significance of sheep dip usage and review groundwater authorisations where appropriate within this water body.		DOE NIEA	Mar 2014
A number of catchment wide actions also apply to this water body. These can be found on Page J.				

UKGBNI1NB030308186		Balloolymore Burn Bann	2009 Status: Poor	
	Action to be taken		Action to be taken by	Target Date
1	Conduct biological investigations to assess aquatic invertebrates at Shanrod Lough bridge, Shanrod House, feeder at Shanrod House and bridge at Balloolymore.		DOE NIEA	Completed
2	Carry out monitoring and assessment of aquatic plants in Eel Burn above Polands Bridge.		DOE NIEA	Completed
3	Carry out compliance assessment of consented discharges within the water body.		DOE NIEA	Dec 2014
4	Assess significance of sheep dip usage and review groundwater authorisations where appropriate within this water body.		DOE NIEA	Mar 2014
5	Carry out a river walk between Eel Burn at Balloolymore and Eel Burn at Corbally House to investigate the cause of invertebrate suppression and presence of sewage fungus.		DOE NIEA	Mar 2014
A number of catchment wide actions also apply to this water body. These can be found on Page J.				

UKGBNI1NB030308184		River Bann	2009 Status: Moderate	
	Action to be taken		Action to be taken by	Target Date
1	Raise awareness and promote the benefits of effective pollution control and farm nutrient and waste management in the Corbet Lough catchment area by developing a Lough Corbet Restoration Programme. CAFRE have agreed to deliver a series of workshops to farmers and landowners in the Corbet Lough area.		DOE NIEA, CAFRE	Mar 2014
2	Investigate identified water quality impacts on Corbet Lough by survey and analysis of surrounding landuse and septic tanks within the catchment.		DOE NIEA	Mar 2014
3	Carry out monitoring and assessment of aquatic plants in Upper Bann at Ballydown and Kate McKays Bridge.		DOE NIEA	Completed
4	Carry out a visual inspection of WWTW at Katesbridge, Aughnavallog, Ballybrick and Drumnascamph.		DOE NIEA	Completed
5	Carry out compliance assessment of consented discharges within the water body.		DOE NIEA	Dec 2014
6	Assess significance of sheep dip usage and review groundwater authorisations where appropriate within this water body.		DOE NIEA	Mar 2014
7	Carry out monitoring and assessment by deploying a Lake Monitoring Buoy to determine failing elements and water quality impacts on Lough Corbet.		DOE NIEA	Mar 2014
8	Raise awareness and promote the benefits of effective pollution control and farm nutrient and waste management by releasing a press article to the farming press with respect to water quality problems affecting inter drumlin lakes including Lough Corbet.		DOE NIEA	Mar 2013

[A number of catchment wide actions also apply to this water body. These can be found on Page J.](#)

UKGBNI1NB030308117		Glebe Burn Bann	2009 Status: Poor	
	Action to be taken	Action to be taken by	Target Date	
1	Conduct biological investigations to assess aquatic invertebrates at Glebe Burn Bann and Cappagh.	DOE NIEA	Completed	
2	Carry out monitoring and assessment to investigate failure of aquatic plants in Tullyorior Tributary at Tullyorior Road Bridge.	DOE NIEA	Completed	
3	Carry out monitoring and assessment to establish extent of dissolved oxygen suppression within the water body.	DOE NIEA	Dec 2014	
4	Carry out compliance assessment of consented discharges within the water body.	DOE NIEA	Dec 2014	
5	Assess significance of sheep dip usage and review groundwater authorisations where appropriate within this water body.	DOE NIEA	Mar 2014	
6	Carry out a river walk at Tullyorior Tributary at Cappagh to investigate invertebrate suppression as observed by biological survey in Autumn 2012.	DOE NIEA	Mar 2014	
A number of catchment wide actions also apply to this water body. These can be found on Page J.				

UKGBNI1NB030308197		River Bann	2009 Status: MEP	
	Action to be taken	Action to be taken by	Target Date	
1	Carry out monitoring and assessment of aquatic plants in Upper Bann at Lawrencetown.	DOE NIEA	Completed	
2	Carry out a visual inspection of WWTW at Hazelbank and Dougan Place.	DOE NIEA	Completed	
3	Carry out compliance assessment of consented discharges within the water body.	DOE NIEA	Dec 2014	
4	Promote the NIEA Water Pollution Hotline through increased advertising, promotion and waterside signage at footbridge access to Solitude Park Banbridge.	DOE NIEA, Banbridge BC	Mar 2014	
5	Assess significance of sheep dip usage and review groundwater authorisations where appropriate within this water body.	DOE NIEA	Dec 2014	
6	Investigate feasibility and practicality of implementing morphological mitigation measures as recommended by the Heavily Modified Water Body Report.	DOE NIEA	Mar 2015	
A number of catchment wide actions also apply to this water body. These can be found on Page J.				

UKGBNI1NB030308189		River Bann	2009 Status: Moderate	
	Action to be taken	Action to be taken by	Target Date	
1	Carry out monitoring and assessment of aquatic plants in Upper Bann at Dynes Bridge.	DOE NIEA	Completed	
2	Carry out compliance assessment at Gilford WWTW.	DOE NIEA	Completed	
3	Carry out compliance assessment of consented discharges within the water body.	DOE NIEA	Dec 2014	
4	Carry out a visual inspection of WWTW at Rock Cottages, Locard Park, Knocknagore, Rosevale Rd and Maglion Terrace.	DOE NIEA	Completed	
5	Promote the NIEA Water Pollution Hotline through increased advertising, promotion and waterside signage at Dynes Bridge.	DOE NIEA	Mar 2014	
A number of catchment wide actions also apply to this water body. These can be found on Page J.				

UKGBNI1NB030308103		River Bann Bannfoot	2009 Status: PEP	
	Action to be taken	Action to be taken by	Target Date	
1	Carry out monitoring and assessment upstream of the monitoring stations at Motorway Bridge and Shillingtons Bridge to assess causes of dissolved oxygen and soluble reactive phosphate suppression within this water body.	DOE NIEA	Dec 2014	
2	Carry out a river walk at Upper Bann Tributary at Carn Industrial Estate to investigate failure of aquatic invertebrates and aquatic plants.	DOE NIEA	Mar 2014	
3	Promote the NIEA Water Pollution Hotline through increased advertising, promotion and waterside signage public footway / canal towpath at Whitecoat Bridge.	DOE NIEA, Craigavon BC	Mar 2014	
4	Carry out monitoring and assessment of aquatic plants in Upper Bann below Motorway Bridge and at Shillington Bridge.	DOE NIEA	Completed	
5	Upgrading of WWTW at Derrytrasna.	DOE NIEA	Completed	
6	Carry out compliance assessment of consented discharges within the water body.	DOE NIEA	Dec 2014	
7	Assess significance of sheep dip usage and review groundwater authorisations where appropriate within this water body.	DOE NIEA	Mar 2014	
8	Investigate feasibility and practicality of implementing morphological mitigation measures as recommended by the Heavily Modified Water Bodies report.	DOE NIEA	Mar 2014	
A number of catchment wide actions also apply to this water body. These can be found on Page J.				

UKGBNI1NB030308105 **Farlough River Bann** **2009 Status: Moderate**

	Action to be taken	Action to be taken by	Target Date
1	Assess significance of sheep dip usage and review groundwater authorisations where appropriate within this water body.	DOE NIEA	Mar 2014

[A number of catchment wide actions also apply to this water body. These can be found on Page J.](#)

UKGBNI3NB0018 **Lough Gullion** **2009 Status: Bad**

	Action to be taken	Action to be taken by	Target Date
1	Assess sources of organic pollution from agriculture and on-site wastewater treatment systems within lake catchment as water body fails to achieve good status for aquatic plants, phosphorus, phytobenthos and dissolved oxygen.	DOE NIEA	Mar 2014
2	Carry out monitoring and assessment by deploying a monitoring buoy in the Lough between May and Sept to establish extent of dissolved oxygen suppression.	DOE NIEA	Mar 2015

[A number of catchment wide actions also apply to this water body. These can be found on Page J.](#)

What other measures are being implemented to maintain and improve the water environment in the Upper Bann LMA?

The programme of measures described in the Neagh Bann River Basin Management Plan has been categorised into two types of measures: existing and planned and supplementary. Existing and planned measures aim to ensure that existing water uses are appropriately managed and that the water environment remains at good status.

Existing and planned measures include those which have been put in place to meet legal requirements. Those which apply in this LMA include:

- The Birds Directive (79/409/EEC);
- The Drinking Water Directive (80/778/EEC) as amended by Directive (98/83/EC);
- The Major Accidents Directive (96/82/EC);
- The Environmental Impact Assessment Directive (85/337/EEC);
- The Sewage Sludge Directive (86/278/EEC);
- The Urban Waste-water Treatment Directive (91/271/EEC);
- The Plant Protection Products Directive (91/414/EEC);
- The Nitrates Directive (91/676/EEC); and
- The Integrated Pollution Prevention Control Directive (96/61/EC).

A number of other existing and planned measures apply in this LMA:

- Cost recovery for water use and promotion of efficient and sustainable water use;
- Protection of drinking water sources;
- Abstraction and impoundment control;
- Point source and diffuse source discharge control;
- Controls on physical modifications to surface waters;
- Prevention or reduction of the impact of accidental pollution incidents;
- Authorisation of discharges to groundwater;
- Priority substances control; and
- Controls on other activities impacting on water status; and
- Controls to avoid increase of pollution in Marine Waters

Further information on existing and planned measures for each sector is available on the programme of measures section of the website.

Supplementary measures are a number of NI wide measures which were agreed by all relevant departments and Agencies in Northern Ireland including DCAL, DARD, DOE, DRD, NIEA, Loughs Agency and NI Water and published as part of the RBMP's.

Supplementary measures have been identified for the following sectors:

- Abstraction and flow regulation;
- Diffuse and point source (Agriculture, Collection and Treatment of sewage, Urban Development, Forestry, Industry and other business, Waste);
- Freshwater Morphology and Marine Morphology;
- Invasive Alien Species and
- Other.

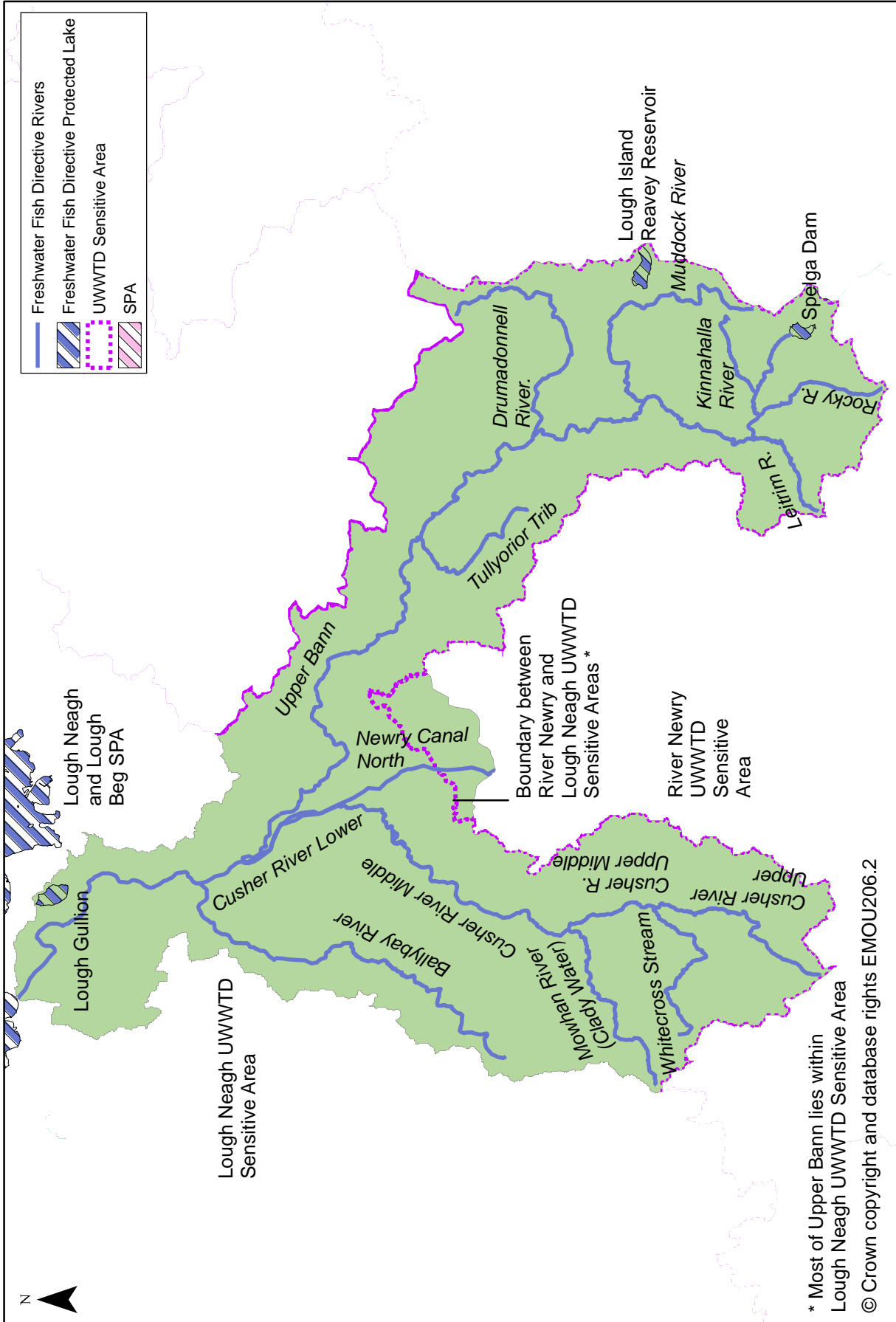
Progress on the implementation of these supplementary measures listed in the RBMP's was reported to the European Commission in December 2012. This LMA action plan forms one of the supplementary measures for the Neagh Bann RBD and includes a number of others where relevant.

What measures are agreed for water dependent Natura 2000 sites in unfavourable condition?

Special Areas of Conservation (Habitats Directive) and Special Protection Areas (Birds Directive) are assessed as being in favourable or unfavourable condition. These areas have been examined to determine if water dependent features are present.

There are no water dependent Special Areas of Conservation in Upper Bann LMA, although it does border the Eastern Mourne Special Area of Conservation. The Lough Neagh and Lough Beg Special Protection Area in this LMA is in unfavourable condition. Unfavourable Special Protection Areas require investigation to identify external and internal factors. The issues are unclear, but may be related to changes in migratory patterns, disturbance to high tide roost sites, water quality and/or ecological factors. Further details on Special Areas of Conservation and Special Protection Areas in the Upper Bann LMA are available in the protected areas section of the website.

Map 3: Protected Areas in Upper Bann LMA



* Most of Upper Bann lies within Lough Neagh UWWTD Sensitive Area
© Crown copyright and database rights EMOU206.2

Protected areas in the Upper Bann LMA

The Upper Bann LMA supports important habitats and wildlife. These areas have been designated under European Directives and require special protection. The protected areas are summarised in the following table and illustrated in Map 3.

Table 2: Protected areas in Upper Bann LMA

Protected Area Type	Location
<p>Waters used for the abstraction of drinking water (drinking water protected areas)</p>	<p>There are 7 surface water protected areas for drinking water. There are 3 groundwater protected areas for drinking water.</p>
<p>Areas designed to protect economically significant aquatic Species</p> <p>Freshwater Fish Directive (78/659/EEC)</p> <p>Shellfish Waters Directive (79/923/EC)</p>	<p>There are 206 km of rivers (22 km designated Cyprinid, 184 km designated Salmonid), 13.3 km canals (designated Cyprinid) and 2.5km² lakes (designated Salmonid) identified under the Freshwater Fish Directive.</p> <p>There are no designated shellfish waters.</p>
<p>Bathing Waters These are bathing waters identified under the Bathing Waters Directives (76/160/EEC)</p>	<p>There are no identified bathing waters.</p>
<p>Nutrient Sensitive Areas</p> <p>Areas designated as sensitive under the Urban Waste Water Treatment Directive (91/271/EEC)</p> <p>Nitrates Directive (91/676/EEC)</p>	<p>There is 1 Urban Waste Water Treatment Directive sensitive area; Lough Neagh.</p> <p>A total territory approach has been adopted in Northern Ireland for the Nitrates Directive.</p>
<p>Areas designated for the protection of habitats or species (Natura 2000 sites) These are areas designated for the protection of habitats or species where the maintenance or improvement of the status of water is an important factor in their protection.</p> <p>Habitats Directive (92/43/EEC)</p> <p>Birds Directive (79/409/EEC)</p>	<p>There are no water dependent Special Areas of Conservation.</p> <p>There is 1 Special Protection Areas; Lough Neagh and Lough Beg.</p>

Abbreviations

Term	Explanation
AFBI	Agri-Food and Biosciences Institute
DARD	Department of Agriculture and Rural Development
DCAL	Department of Culture, Arts and Leisure
DOE	Department of the Environment
DRD	Department of Regional Development
EP	Ecological Potential – the status of a heavily modified water body measured against the maximum ecological quality it could achieve given the constraints imposed upon it by those heavily modified characteristics necessary for its use. There are four classes for the status of heavily modified water bodies: good ecological potential or better (GEP), moderate ecological potential (MEP), poor ecological potential (PEP) and bad ecological potential (BEP).
GSNI	Geological Survey of Northern Ireland
LMA	Local Management Area
NIEA	Northern Ireland Environment Agency
NIWL	Northern Ireland Water Limited
WWTW	Waste Water Treatment Works

Working together to implement the Local Management Action Plan.

If you would like to get involved, find out more about the plans, or are carrying out work that will assist in protecting the water environment let us know at the Upper Neagh Bann Catchment Stakeholder Group meetings or by contacting the Catchment Management Officer, Wendy Craig.

Email: wendy.craig@doeni.gov.uk

Telephone: 028 9262 3168

Further details are available at www.doeni.gov.uk/niea/neagh-workingtogether

Water Pollution Hotline:

***Freephone 0800 80 70 60**

This line is manned 24 hours a day, 7 days a week.

*Mobile calls are charged at standard network rates.

If you become aware of a water pollution incident please call the Water Pollution Hotline in confidence giving the location and nature of the pollution.



Our aim is to protect, conserve and promote the natural environment and built heritage for the benefit of present and future generations.

Northern Ireland Environment Agency
Water Management Unit
17 Antrim Road
Lisburn
BT28 3AL
T. (028) 9262 3004
www.doeni.gov.uk/niea



An Agency within the Department of the
Environment
www.doeni.gov.uk



**INVESTORS
IN PEOPLE**