

Significant Water Management Issues

Lower Bann Local Management Area Action Plan and Update

December 2013

Lower Bann Local Management Area Action Plan Update October 2012

LMA Action	Progress Update
Organise two CSG meetings per year to provide an open forum for discussion on water issues and encourage involvement in developing and implementing the Lower Bann Management Area Plan	Spring Meeting held 09 May 2012 in Ballymena North Business Centre, Autumn meeting scheduled for 16 October 2012 in Randalstown. Spring Meeting held 29 May 2013, Autumn meeting held 05 November 2013. Presentations and Note of meetings can be found on http://www.doeni.gov.uk/niea/water-home/wfd/public_partic_3/catchment_stakeholder_groups/lower_neagh_bann.htm
Promote and encourage local projects through WATER Environment Community awards	Awards promoted through CSG meeting, NIEA website and e-mail. The Lower Neagh Bann 2012 winners were Clady Angling Club who proposed a Salmon in the Classroom project involving local schools, and Causeway Coast & Glens Heritage Trust for their Water for Life project. No award made in 2013 due to the introduction of Water Quality Improvement Grant scheme
Highlight external funding opportunities for water management projects to local partners	Water Environment Community Awards promoted through CSG meeting, NIEA website and e-mail. Water Quality Improvement Grant Scheme promoted through email contact list and NIEA website.
Promote NIEA Water Pollution Hotline through advertising, promotion and signage	Signs erected at Somerset Park, Castleroe Road, Coleraine – Lower Bann A29 Drumcroon Road – Macosquin River Clady Angling Club House – Clady River Kilrea Road – Clady River NIEA pollution hotline number to be added to DCAL notice boards - to be rolled out with signage replacements Hotline number is promoted frequently on NIEA facebook page and NIEA Twitter website.
Develop leaflets and articles to promote effective farm nutrient	‘Water Quality Plans in Action’ article published in Farming Life October 2010. “Landowner Awareness – Improving Water Quality in your local area” leaflet

Lower Bann Local Management Area Action Plan Update October 2012

and waste management	developed in conjunction with DARD, UFU and Loughs Agency.
Collate existing information on location of aquatic (including river bank) invasive alien species	During the course of river walks and RHAT surveys undertaken by NIEA any sightings or suspected sightings of invasive alien species are collated and reported to Invasive Species Ireland.
Raise awareness of catchment management issues by release of relevant press articles and web publication of Lough Neagh LMA e-zine. Support local community events.	3 rd issue of the Lough Neagh LMA E-zine e-mailed to Lower Neagh Bann CSG contacts. Attendance at 2012 Balmoral Show demonstrating the use of the River Basin Planning Web-mapper. NIEA staff took part in the 'Greenmount College Centenary Celebration Open Day' event which was organised by CAFRE. Staff from NIEA provided examples of 'good bugs' and 'bad bugs' to allow children to assess the water quality of their river. Also took the opportunity to highlight River Basin Management Plans. NIEA staff also attended Horticulture 2012 at Greenmount to promote River Basin Management Plans and pesticide use and disposal awareness.
Promote the control of invasive alien species on farmland	NIEA Natural heritage have liaised with a range of individuals and groups and provided training and advice in relation to invasive species control
Raise awareness and promote the benefits of effective farm nutrient and waste management	All applicants to DARD agri-environment schemes receive a farm waste management advisory visit as part of their application to the scheme. DARD have produced a Code of Good Agricultural Practice which contains practical management advice on how farm wastes such as silage effluent, slurry and manure can be collected, stored and spread with minimum risk to the environment. DARD have developed an agri-environment training course for farmers dealing with farm wastes and nutrient management planning. Water Framework Directive awareness talk given to CAFRE students in April 2012
Encourage riparian zone management with an aim to improve biodiversity and minimise	A measure within the Nitrates Action Programme is that all farms must carry out crop and soil management to minimise soil erosion and nutrient runoff. This is verified during cross-compliance visits.

Lower Bann Local Management Area Action Plan Update October 2012

sedimentation through practical management measures on farms	
Complete the phosphorus nutrient budget work for Northern Ireland	Nutrient budgets are being analysed alongside SIMCAT (SIMulation of the water quality of CATchments) models developed to represent the behaviour of flow and pollutants in rivers. This will inform actions to address diffuse and point source nutrient inputs to the water environment.
Create an inventory of physical structures within the river channel and bank structures	Some work has been carried out in respect of assessment of physical barriers to fish passage. NIEA staff are continuing to access physical structures in rivers and this work is on-going on Six Mile Water at present.
Investigate the feasibility and practicality of implementing morphological mitigation measures	Discussions held with Council Biodiversity Officer, Rivers Agency and Rivers Restoration Centre to look at a potential project in the Ballymoney area.
Carry out a river walk to determine and address sources of organic pollution affecting benthic invertebrates and resulting in low biotic scores and/or observed sewage fungus	Ballymoney River - No evidence of polluting discharges. CSO's found but did not appear to be causing pollution
Targeted education, advice and regulatory action to prevent pollution and protect the water environment	"Householder Awareness – Improving Water Quality in your local area" leaflet has been developed with NIW. The leaflet aims to raise awareness amongst householders on issues such as septic tanks and pesticide use.
Develop targeted ecological modelling tools for lake management.	The Interreg funded DOLMANT Project is currently underway. The outcome of this project will be used to inform management actions for the Lough.
Carryout Rapid Hydro morphology Assessment Technique (RHAT) survey to ground truth heavily	Ballymoney River - survey carried out - recommendation is that the Heavily Modified designation is removed. This will be put forward for approval at end of 1 st cycle River Basin Management Plans.

Lower Bann Local Management Area Action Plan Update October 2012

modified designation	
Conduct a water resource assessment to inform a review of abstraction licenses for the Lower Bann LMA	The water resource assessment has been completed for Lower Bann LMA. The Agency will continue to monitor flows within the catchment through a combination of the river flow gauging network, spot gauging and modelling. Existing licence holders will also be required to make monitoring returns on their abstracted volumes.
Carry out a Lough Neagh baseline fish survey starting in summer 2011.	This is being carried out by AFBI and work began in the summer 2011. The project is scheduled to last 3 years. This is part of the DOLMANT project
Observation of nitrate trends and liaison with research partners for further investigation into recovery time	Nitrates are part of the surveillance and operational monitoring carried out by NIEA. As NIEA does not fund any research directly it can only encourage research institutions in certain topics. To date this topic has not been adopted and progressed

If you are running a project or carrying out work that will assist in protecting the water environment or restoring natural waters let us know by contacting Gerry Wilson, Catchment Management Officer for Lower Neagh Bann by e-mailing gerry.wilson@doeni.gov.uk or by telephone 9262 3219

If you become aware of a water pollution incident **you** can call the Water Pollution Freephone Hotline in confidence with the location of the pollution incident and the nature of the pollution

Lower Bann Local Management Area Action Plan Update October 2012



LOWER BANN
Local Management Area



Map 1: Lower Bann Local Management Area



© Crown copyright and database rights EMOU206.2.

Introduction

River Basin Management Plans were published in December 2009. The plans describe where the water environment needs to be protected or improved, the timeframe to make these improvements and how that can be achieved. The plans will be implemented through Local Management Areas (LMAs) during the 2009 to 2015 planning cycle. The Lower Bann Local Management Area Action Plan is one of a series of action plans that have been developed for the 26 LMAs across the Neagh Bann, North Western and North Eastern River Basin Districts. The action plan details local measures identified to improve the water environment.

Lower Bann Local Management Area

The Lower Bann LMA (Map 1) is part of the Neagh Bann River Basin District and stretches from Lough Neagh at Toome to the north coast. The Lower Bann LMA covers an area of 1044 km². The main river is the Lower Bann which flows from Lough Neagh in the south, through Lough Beg and onwards towards Coleraine. The river joins with a number of significant tributaries such as the Aghadowey, Agivey and Macosquin Rivers and supports a wide diversity of natural habitats several of which are protected. The river also supports a wide range of recreational activities including walking, canoeing, boating and angling. Coleraine and Ballymoney are the main towns in the Lower Bann LMA. Significant smaller towns include Garvagh and Portglenone. There are two Areas of Outstanding Natural Beauty in this LMA. These are Binevenagh and Sperrin. There are also thirty Areas of Special Scientific Interest in the area including Bann Estuary and Errigal Glen.

The Lower Bann LMA supports important habitats and wildlife. These areas have been designated under European Directives and require special protection. Details of the protected areas are summarised in Table 3.

What is the status of surface waters in the Lower Bann LMA?

71% of the surface water bodies in the Lower Bann LMA (Map 2) have been classified as less than good status and 7% of these have been identified as heavily modified. There are a number of pressures that may prevent some waters reaching good quality and the main ones in this LMA are considered to be:

- Abstraction and flow regulation
- Diffuse and point source pollution
- Changes to morphology (physical habitat)
- Invasive alien species

Groundwaters (underground water) interact with the surface waters around them, thus the quality and quantity of an area's groundwater can affect the surface waters. There is one

groundwater body in the Lower Bann LMA, Coleraine-Kilrea, which is currently achieving good status.

Six water bodies in the area were identified as being impacted by abstraction and flow regulation. Bann Brook is classified due to water storage. River Bann at Coleraine has been modified due to navigation and flood risk management. River Bann at Portglenone has bank reinforcements at the marina, flood gates and canals. Ballymoney River has two impoundments, three weirs and is reinforced throughout the town of Ballymoney. Lough Beg is controlled by the Toome sluice gates. The Bann Estuary is subject to moderated flows from the sluice gates at Toome as well as tidal and navigation considerations. A number of biological and chemical water quality elements used in classification can be affected by both diffuse and point source pollution.

In this LMA the main impacts were seen in invertebrate communities and to a lesser extent in macrophyte communities. The rivers affected were: Ballymoney, Lisnagroan, Knockoneill, Bann Brook, Macosquin, Shinney, Black Burn, Glenlough, Drumawhiskey, River Bann, Ivy Burn, Culmore River, Breckagh Water, Articlave, Ballysally Burn and Lodge Burn.

Seven rivers were identified as being affected by changes to morphology (physical habitat). The main rivers affected were: Knockoneill, Glenlough, Aghadowey, Ashlamaduff, Brockagh, Ballysally Burn and Mettican Rivers. The water environment in Northern Ireland has been impacted by the introduction of invasive alien species. Species which have already become established throughout this LMA include:

- Canadian Pondweed (*Elodea canadensis*)
- Himalayan Balsam (*Impatiens glandulifera*)
- Giant Hogweed (*Heracleum mantegazzianum*)
- Japanese Knotweed (*Fallopia japonica*)

This page is intentionally blank.

Map 2: 2009 Status of surface water bodies in Lower Bann LMA

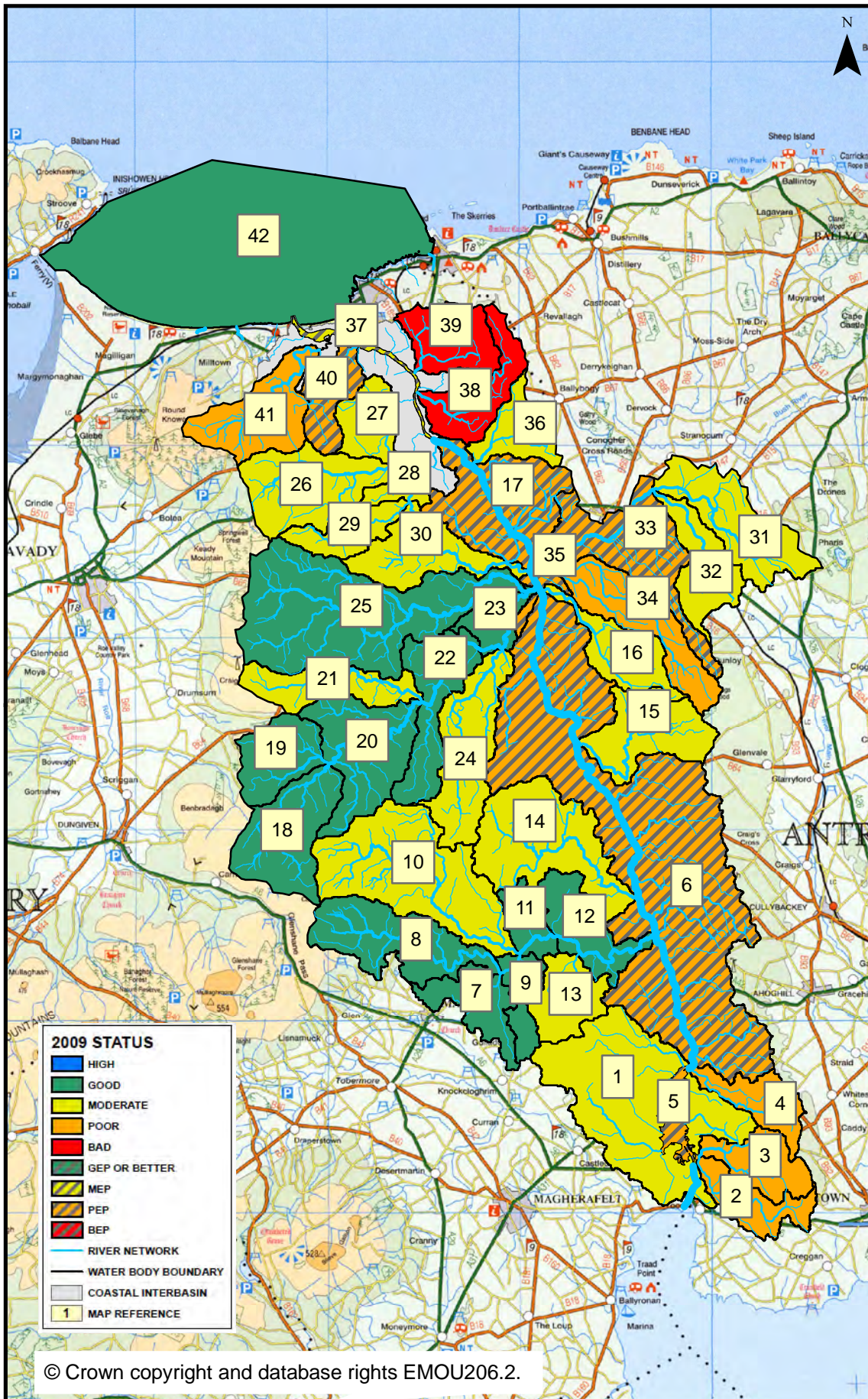


Table 1: 2009 status and proposed objectives

Map Reference	Water Body Code	Water Body Name	2009 Status	2015 Objective	Page Number
1	UKGBNI1NB030301169	River Bann Beg	Moderate	Good	12
2	UKGBNI1NB030301163	Ivy Burn	Poor	Moderate	12
3	UKGBNI1NB030301153	River Bann Tributary	Poor	Moderate	12
4	UKGBNI1NB030301152	River Bann Tributary	Poor	Moderate	13
5	UKGBNI3NB0013	Lough Beg	PEP	PEP	13
6	UKGBNI1NB030301149	River Bann	PEP	MEP	13
7	UKGBNI1NB030301155	Curragh Burn	Good	Good	13
8	UKGBNI1NB030301230	Grillagh River	Good	Good	14
9	UKGBNI1NB030301081	Curragh Burn Tributary	Good	Good	14
10	UKGBNI1NB030301069	Knockoneill River	Moderate	Good	15
11	UKGBNI1NB030301079	Clady River	Good	Good	15
12	UKGBNI1NB030301078	Clady River	Good	Good	16
13	UKGBNI1NB030301080	Clady River Tributary	Moderate	Good	16
14	UKGBNI1NB030301068	Inverroe River	Moderate	Good	16
15	UKGBNI1NB030301166	Culmore River	Moderate	Good	17
16	UKGBNI1NB030301070	Lonagher Burn	Moderate	Good	17
17	UKGBNI1NB030301214	River Bann	PEP	MEP	17
18	UKGBNI1NB030301215	Ashlamaduff River	Good	Good	18
19	UKGBNI1NB030301216	Brockagh Water	Good	Good	18
20	UKGBNI1NB030301075	Agivey River	Good	Good	18
21	UKGBNI1NB030301224	Mettican River	Moderate	Good	19
22	UKGBNI1NB030301066	Agivey River	Good	Good	19

Table 1: 2009 status and proposed objectives (continued)

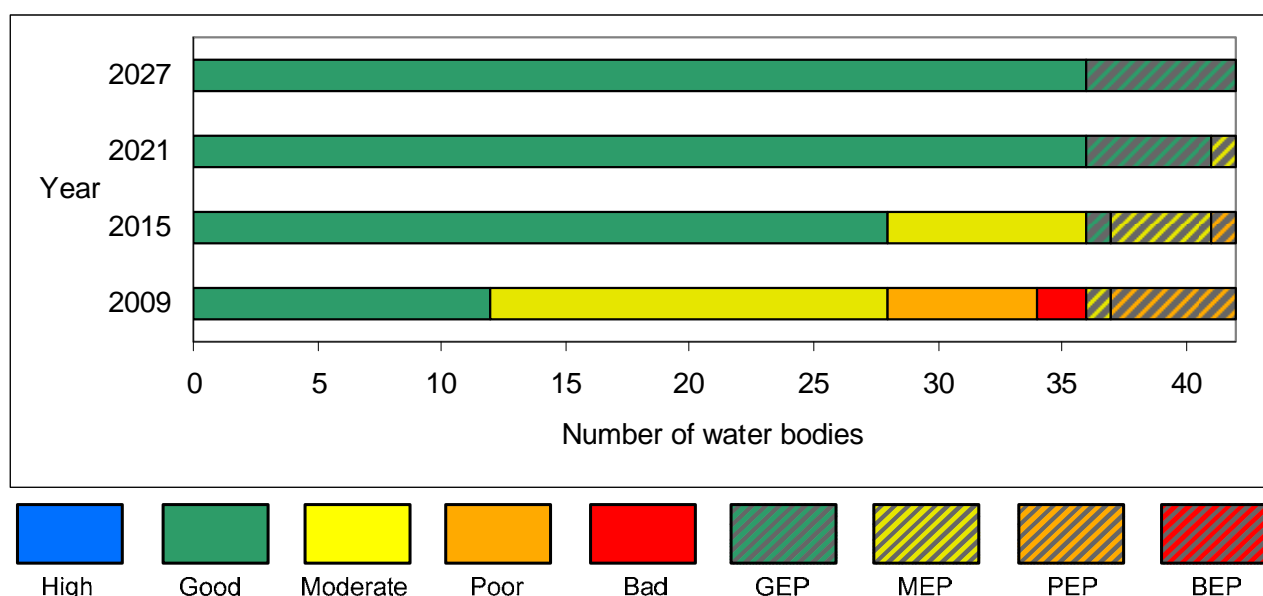
Map Reference	Water Body Code	Water Body Name	2009 Status	2015 Objective	Page Number
23	UKGBNI1NB030301064	Agivey River	Good	Good	19
24	UKGBNI1NB030301072	Mayoghill River	Moderate	Good	20
25	UKGBNI1NB030301213	Aghadowey River	Good	Good	20
26	UKGBNI1NB030301225	Macosquin River	Moderate	Good	21
27	UKGBNI1NB030301077	Black Burn	Moderate	Good	21
28	UKGBNI1NB030301074	Macosquin River	Moderate	Good	21
29	UKGBNI1NB030301076	Shinney Water	Moderate	Good	22
30	UKGBNI1NB030301073	Macosquin River	Moderate	Good	22
31	UKGBNI1NB030301211	Breckagh River	Moderate	Good	22
32	UKGBNI1NB030301146	Glenlough River	Moderate	Good	23
33	UKGBNI1NB030301220	Ballymoney River	PEP	MEP	23
34	UKGBNI1NB030301147	Drumawhiskey River	Poor	Moderate	24
35	UKGBNI1NB030301065	Ballymoney River	Poor	Moderate	24
36	UKGBNI1NB030301219	River Bann Tributary	Moderate	Good	25
37	UKGBNI5NB010010	Bann Estuary	MEP	GEP	25
38	UKGBNI1NB030301223	Lodge Burn	Bad	Moderate	25
39	UKGBNI1NB030301222	Ballysally Burn Bann	Bad	Moderate	26
40	UKGBNI1NB030301071	Bann Brook	PEP	MEP	26
41	UKGBNI1NB030301221	Articlave River	Poor	Moderate	26
42	UKGBNI6NB010	Portstewart Bay	Good	Good	27

This page is intentionally blank.

What improvements do we plan to achieve?

We have set environmental objectives to deliver improvements as shown below. We aim to achieve good status or better in 69% of our surface waters and maintain good status in 100% of our groundwaters.

Figure 1: 2009 status and proposed objectives for surface waters in the Lower Bann LMA



How are we going to maintain and improve the water environment in the Lower Bann LMA?

There are a number of actions which will be implemented in the Lower Bann LMA in order to maintain and improve the water environment. The list of actions that follows include actions that apply throughout the LMA and also actions that apply to individual water bodies.

The actions below apply throughout the LMA.

	Action to be taken	Action to be taken by	Target Date
1	Conduct a water resource assessment to inform an ongoing review of abstraction licences within Northern Ireland.	DOE NIEA	Mar 2013
2	Ensure that licences for new and existing hydro power developments are compliant with the Water Framework Directive and Habitats Regulations to support good ecological status and carry out risk based compliance visits.	DOE NIEA	Mar 2013
3	Review of groundwater abstraction and planning applications where necessary.	DOE NIEA, Geological Survey NI	Dec 2015
4	Complete the phosphorus nutrient budget work for Northern Ireland to establish nutrient inputs from different sectors.	AFBI	Mar 2013
5	Review the relevance of nutrient budget in the context of this LMA to establish relative nutrient inputs from agriculture, industry and sewage discharges.	DOE NIEA	Mar 2013
6	Observation of nitrate trends in groundwater and liaison with research partners for further investigation.	DOE NIEA, Geological Survey NI	Dec 2015
7	Raise awareness and promote the benefits of effective farm nutrient and waste management within the LMA.	DARD Countryside Management Branch	Mar 2013
8	Develop leaflets and articles to promote effective farm nutrient and waste management within the LMA.	DARD Countryside Management Branch	Mar 2013
9	Encourage riparian zone management with an aim to improve biodiversity and minimise sedimentation through practical management measures on farms within the LMA.	DARD Countryside Management Branch	Mar 2013
10	Promote best practice in the use of pesticides on farms within the LMA.	DARD Countryside Management Branch	Mar 2013
11	Promote the control of invasive alien species on farmland within the LMA.	DARD Countryside Management Branch	Mar 2013
12	Conduct invasive alien species recording during river walks and raise awareness on how to prevent the spread of invasive alien species within the LMA.	DOE NIEA	Mar 2013
13	Promote the NIEA Water Pollution Hotline through increased advertising, promotion and waterside signage in appropriate areas.	DOE NIEA	Mar 2013
14	Promote public participation by hosting bi-annual Catchment Stakeholder group meetings, holding bi-lateral meetings with interested groups and individuals and the generation of e-zines.	DOE NIEA	Mar 2013

	Action to be taken	Action to be taken by	Target Date
15	Promote public participation by encouraging the establishment of Rivers Trusts.	DOE NIEA	Mar 2013
16	Review Rivers Agency's annual watercourse maintenance program within the LMA.	DOE NIEA, Rivers Agency	Mar 2013
17	Highlight external funding opportunities for water management projects to local partners including the Water Environment Community Awards.	DOE NIEA	Mar 2013
18	Support local environmental initiatives such as river clean up campaigns.	DOE NIEA	Mar 2013
19	Support pollution prevention campaigns such as 'Reduce Reuse Recycle', 'Bag It & Bin It', 'Stop and Think (Not Down the Sink)'.	DOE NIEA, NIWL	Mar 2013
20	Create an inventory of physical structures within the river channel and bank structures where identified during river walks.	DOE NIEA	Mar 2013

The actions below apply to individual water bodies in the LMA. The 2009 status or ecological potential is shown for each water body.

UKGBNI1NB030301169		River Bann Beg	2009 Status: Moderate	
	Action to be taken		Action to be taken by	Target Date
1	Carry out compliance assessment of Bellaghy WWTW.		DOE NIEA	Mar 2013
2	Carry out compliance assessment of consented industrial discharges including Tar & Bitumen plant at Rocktown.		DOE NIEA	Mar 2013
3	Assess sources of oil contamination around Industrial Estate at Deerpark, Toome.		DOE NIEA	Mar 2013

[A number of catchment wide actions also apply to this water body. These can be found on Page 10.](#)

UKGBNI1NB030301163		Ivy Burn	2009 Status: Poor	
	Action to be taken		Action to be taken by	Target Date
1	Carry out compliance assessment of private sewage consented discharge.		DOE NIEA	Mar 2013
2	Carry out a river walk from Duneane Road to Roguery Road to investigate polluting impacts on aquatic invertebrates.		DOE NIEA	Mar 2013
3	Conduct invasive alien species recording during river walks and raise awareness on how to prevent the spread of invasive alien species.		DOE NIEA	Mar 2013

[A number of catchment wide actions also apply to this water body. These can be found on Page 10.](#)

UKGBNI1NB030301153		River Bann tributary	2009 Status: Poor	
	Action to be taken		Action to be taken by	Target Date
1	Carry out a visual inspection of WWTW at Moneyglass.		DOE NIEA	Mar 2013

[A number of catchment wide actions also apply to this water body. These can be found on Page 10.](#)

UKGBNI1NB030301152		River Bann tributary	2009 Status: Poor	
	Action to be taken		Action to be taken by	Target Date
1	Carry out compliance assessment at Grange (Taylorstown) Waste Water Treatment Works.		DOE NIEA	Mar 2013
2	Carry out compliance assessment of consented vehicle wash.		DOE NIEA	Mar 2013
A number of catchment wide actions also apply to this water body. These can be found on Page 10.				

UKGBNI3NB0013		Lough Beg	2009 Status: PEP	
	Action to be taken		Action to be taken by	Target Date
1	Develop targeted ecological modelling tools for lake management.		DOE NIEA	Dec 2015
A number of catchment wide actions also apply to this water body. These can be found on Page 10.				

UKGBNI1NB030301149		River Bann	2009 Status: PEP	
	Action to be taken		Action to be taken by	Target Date
1	Investigate identified water quality impacts due to the influence of Lough Neagh on this water body.		DOE NIEA	Dec 2015
2	Carry out compliance assessment visits on hydro power installations to ensure compliance with the Abstraction and Impoundment Regulations.		DOE NIEA	Mar 2013
A number of catchment wide actions also apply to this water body. These can be found on Page 10.				

UKGBNI1NB030301155		Curragh Burn	2009 Status: Good	
	Action to be taken		Action to be taken by	Target Date
1	Maintain current regulatory controls as water body status is Good or better.		DOE NIEA	Mar 2013
A number of catchment wide actions also apply to this water body. These can be found on Page 10.				

UKGBNI1NB030301230		Grillagh River	2009 Status: Good	
	Action to be taken		Action to be taken by	Target Date
1	Maintain current regulatory controls as water body status is Good or better.		DOE NIEA	Mar 2013
2	Carry out fish monitoring and assessment at the 17 current sites located in this water body to determine juvenile Atlantic salmon recruitment under the NASCO treaty.		AFBI, DCAL	Mar 2013
3	Provide advice on protected area designations relating to Carn-Glenshane Special Area of Conservation.		DOE NIEA	Dec 2015
4	Carry out compliance assessment visits on hydro power installations to ensure compliance with the Abstraction and Impoundment Regulations.		DOE NIEA	Mar 2013

[A number of catchment wide actions also apply to this water body. These can be found on Page 10.](#)

UKGBNI1NB030301081		Curragh Burn tributary	2009 Status: Good	
	Action to be taken		Action to be taken by	Target Date
1	Maintain current regulatory controls as water body status is Good or better.		DOE NIEA	Mar 2013
2	Carry out fish monitoring and assessment at 1 site to determine juvenile Atlantic salmon recruitment under the NASCO treaty.		AFBI, DCAL	Mar 2013

[A number of catchment wide actions also apply to this water body. These can be found on Page 10.](#)

UKGBNI1NB030301069		Knockoneill River	2009 Status: Moderate	
	Action to be taken		Action to be taken by	Target Date
1	Assess sources of organic pollution for example from Combined Sewer Overflows in vicinity of Upperlands.		DOE NIEA	Mar 2013
2	Carry out compliance assessment of Swatragh WWTW.		DOE NIEA	Mar 2013
3	Carry out compliance assessment of industrial consented discharges including a Scrapyard, a Fuel Depot, a Textile Plant and a Fish Hatchery.		DOE NIEA	Mar 2013
4	Carry out a river walk from Upperlands Bridge (Kilrea Road) to Dungalady Bridge to investigate impact on aquatic invertebrates.		DOE NIEA	Mar 2013
5	Conduct invasive alien species recording during river walks and raise awareness on how to prevent the spread of invasive alien species.		DOE NIEA	Mar 2013
6	Carry out compliance assessment visits on hydro power installations to ensure compliance with the Abstraction and Impoundment Licensing regulations.		DOE NIEA	Mar 2013
7	Carry out fish monitoring and assessment at the 18 current sites located in this water body to determine juvenile Atlantic salmon recruitment under the NASCO treaty.		AFBI, DCAL	Mar 2013
8	Provide advice on protected area designations relating to Carn-Glenshane Special Area of Conservation.		DOE NIEA	Dec 2015

[A number of catchment wide actions also apply to this water body. These can be found on Page 10.](#)

UKGBNI1NB030301079		Clady River	2009 Status: Good	
	Action to be taken		Action to be taken by	Target Date
1	Maintain current regulatory controls as water body status is Good or better.		DOE NIEA	Mar 2013

[A number of catchment wide actions also apply to this water body. These can be found on Page 10.](#)

UKGBNI1NB030301078		Clady River	2009 Status: Good	
	Action to be taken		Action to be taken by	Target Date
1	Maintain current regulatory controls as water body status is Good or better.		DOE NIEA	Mar 2013
2	Carry out fish monitoring and assessment at the 3 sites in this water body to determine juvenile Atlantic salmon recruitment under the NASCO treaty.		AFBI, DCAL	Mar 2013
3	Carry out compliance assessment visits on hydro power installations to ensure compliance with the Abstraction and Impoundment Regulations.		DOE NIEA	Mar 2013
A number of catchment wide actions also apply to this water body. These can be found on Page 10.				

UKGBNI1NB030301080		Clady River tributary	2009 Status: Moderate	
	Action to be taken		Action to be taken by	Target Date
1	Carry out a visual inspection of WWTW at Moyagall Road.		DOE NIEA	Completed
2	Assess forestry operations in Portglenone Forest. Ascertain felling programme in the catchment and engage with forestry technical field staff to ensure measures are in place to mitigate risks from felling.		DOE NIEA	Mar 2013
3	Investigate sources of sediment from peat extraction activities.		DOE NIEA	Mar 2013
4	Investigate identified water quality impacts in relation to abstraction for hydro electric schemes.		DOE NIEA	Dec 2015
A number of catchment wide actions also apply to this water body. These can be found on Page 10.				

UKGBNI1NB030301068		Inverroe River	2009 Status: Moderate	
	Action to be taken		Action to be taken by	Target Date
1	Carry out a visual inspection of WWTW at Fallahogy, Drumagarner, Lismoyle.		DOE NIEA	Completed
2	Carry out a visual inspection of WWTW at Drumard and Drumane.		DOE NIEA	Mar 2013
3	Carry out a river walk from Shanaghy Bridge to confluence with Inver Roe Water to investigate impact on aquatic invertebrates.		DOE NIEA	Mar 2013
4	Conduct invasive alien species recording during river walks and raise awareness on how to prevent the spread of invasive alien species.		DOE NIEA	Mar 2013
A number of catchment wide actions also apply to this water body. These can be found on Page 10.				

UKGBNI1NB030301166		Culmore River	2009 Status: Moderate	
	Action to be taken		Action to be taken by	Target Date
1	Conduct biological investigations to assess aquatic invertebrates at Beechcroft, Gortclanny and Lisnagaver bridge.		DOE NIEA	Completed
2	Assess sources of organic pollution from agriculture at Rasharkin.		DOE NIEA	Mar 2013
A number of catchment wide actions also apply to this water body. These can be found on Page 10.				

UKGBNI1NB030301070		Lonagher Burn	2009 Status: Moderate	
	Action to be taken		Action to be taken by	Target Date
1	Conduct biological investigations to assess aquatic invertebrates at Mullan's bridge, Dirraw, near Carrowreagh House and Eden Burn.		DOE NIEA	Completed
2	Carry out pollution prevention and enforcement measures as a follow up to LMA investigations.		DOE NIEA	Mar 2013
A number of catchment wide actions also apply to this water body. These can be found on Page 10.				

UKGBNI1NB030301214		River Bann	2009 Status: PEP	
	Action to be taken		Action to be taken by	Target Date
1	Assess sources of organic pollution from agriculture and septic tanks.		DOE NIEA	Mar 2013
2	Carry out a river walk in Artigoran tributary to investigate polluting impacts on aquatic invertebrates, algae and aquatic plants.		DOE NIEA	Mar 2013
3	Conduct invasive alien species recording during river walks and raise awareness on how to prevent the spread of invasive alien species.		DOE NIEA	Mar 2013
A number of catchment wide actions also apply to this water body. These can be found on Page 10.				

UKGBNI1NB030301215		Ashlamaduff River	2009 Status: Good	
	Action to be taken		Action to be taken by	Target Date
1	Maintain current regulatory controls as water body status is Good or better.		DOE NIEA	Mar 2013
2	Provide advice on protected area designations relating to Carn-Glenshane Special Area of Conservation.		DOE NIEA	Dec 2015
A number of catchment wide actions also apply to this water body. These can be found on Page 10.				

UKGBNI1NB030301216		Brockagh Water	2009 Status: Good	
	Action to be taken		Action to be taken by	Target Date
1	Maintain current regulatory controls as water body status is Good or better.		DOE NIEA	Mar 2013
A number of catchment wide actions also apply to this water body. These can be found on Page 10.				

UKGBNI1NB030301075		Agivey River	2009 Status: Good	
	Action to be taken		Action to be taken by	Target Date
1	Maintain current regulatory controls as water body status is Good or better.		DOE NIEA	Mar 2013
2	Provide advice on protected area designations relating to Carn-Glenshane Special Area of Conservation.		DOE NIEA	Dec 2015
A number of catchment wide actions also apply to this water body. These can be found on Page 10.				

UKGBNI1NB030301224		Mettican River	2009 Status: Moderate	
	Action to be taken		Action to be taken by	Target Date
1	Assess forestry operations in Gortnamoyagh, Garvagh and Aghadowey. Ascertain felling programme in the catchment and engage with forestry technical field staff to ensure measures are in place to mitigate risks from felling.		DOE NIEA	Mar 2013
2	Carry out compliance assessment on Garvagh Waste Water Treatment Works.		DOE NIEA	Mar 2013
3	Assess sources of organic pollution in the lower reaches of the water body.		DOE NIEA	Mar 2013
4	Carry out compliance assessment visits on hydro power installations to ensure compliance with the Abstraction and Impoundment Regulations.		DOE NIEA	Mar 2013
A number of catchment wide actions also apply to this water body. These can be found on Page 10.				

UKGBNI1NB030301066		Agivey River	2009 Status: Good	
	Action to be taken		Action to be taken by	Target Date
1	Carry out compliance assessment visits on hydro power installations to ensure compliance with the Abstraction and Impoundment Regulations.		DOE NIEA	Mar 2013
A number of catchment wide actions also apply to this water body. These can be found on Page 10.				

UKGBNI1NB030301064		Agivey River	2009 Status: Good	
	Action to be taken		Action to be taken by	Target Date
1	Maintain current regulatory controls as water body status is Good or better.		DOE NIEA	Mar 2013
A number of catchment wide actions also apply to this water body. These can be found on Page 10.				

UKGBNI1NB030301072		Mayoghill River	2009 Status: Moderate	
	Action to be taken		Action to be taken by	Target Date
1	Carry out a visual inspection of WWTW at Mayoghill, Cullyramer, Boveedy, Caheny.		DOE NIEA	Completed
2	Carry out compliance assessment of 4 private sewage consented discharges.		DOE NIEA	Mar 2013
3	Carry out a river walk at Cullyramer Road from Mayoghill Bridge to Caheny Bridge to investigate polluting impacts on algae.		DOE NIEA	Mar 2013
4	Conduct invasive alien species recording during river walks and raise awareness on how to prevent the spread of invasive alien species.		DOE NIEA	Mar 2013

[A number of catchment wide actions also apply to this water body. These can be found on Page 10.](#)

UKGBNI1NB030301213		Aghadowey River	2009 Status: Good	
	Action to be taken		Action to be taken by	Target Date
1	Maintain current regulatory controls as water body status is Good or better.		DOE NIEA	Mar 2013
2	Conduct invasive alien species recording during river walks and raise awareness on how to prevent the spread of invasive alien species.		DOE NIEA	Mar 2013
3	Carry out compliance assessment of waste disposal facility at Ringsend.		DOE NIEA	Mar 2013
4	Carry out compliance assessment visits on hydro power installations to ensure compliance with the Abstraction and Impoundment Regulations.		DOE NIEA	Mar 2013

[A number of catchment wide actions also apply to this water body. These can be found on Page 10.](#)

UKGBNI1NB030301225		Macosquin River	2009 Status: Moderate	
	Action to be taken		Action to be taken by	Target Date
1	Investigate identified water quality impacts especially in relation to water abstraction.		DOE NIEA	Mar 2013
2	Investigate sources of sediment from Quarry operations.		DOE NIEA	Mar 2013
3	Carry out a river walk from A29 to confluence with Black Burn to investigate impacts on the aquatic invertebrate life.		DOE NIEA	Mar 2013
4	Conduct invasive alien species recording during river walks and raise awareness on how to prevent the spread of invasive alien species.		DOE NIEA	Mar 2013
5	Carry out compliance assessment visits on hydro power installations to ensure compliance with the Abstraction and Impoundment Licensing Regulations.		DOE NIEA	Mar 2013
A number of catchment wide actions also apply to this water body. These can be found on Page 10.				

UKGBNI1NB030301077		Black Burn	2009 Status: Moderate	
	Action to be taken		Action to be taken by	Target Date
1	Carry out a river walk from A29 to confluence with Macosquin River to investigate impacts on the aquatic invertebrate life.		DOE NIEA	Mar 2013
2	Conduct invasive alien species recording during river walks and raise awareness on how to prevent the spread of invasive alien species.		DOE NIEA	Mar 2013
A number of catchment wide actions also apply to this water body. These can be found on Page 10.				

UKGBNI1NB030301074		Macosquin River	2009 Status: Moderate	
	Action to be taken		Action to be taken by	Target Date
1	Investigate sources of sediment in the watercourse downstream of the quarry.		DOE NIEA	Mar 2013
A number of catchment wide actions also apply to this water body. These can be found on Page 10.				

UKGBNI1NB030301076		Shinney Water	2009 Status: Moderate	
	Action to be taken		Action to be taken by	Target Date
1	Assess sources of organic pollution to determine cause of aquatic invertebrate failure.		DOE NIEA	Mar 2013
A number of catchment wide actions also apply to this water body. These can be found on Page 10.				

UKGBNI1NB030301073		Macosquin River	2009 Status: Moderate	
	Action to be taken		Action to be taken by	Target Date
1	Assess significance of sheep dip usage and review groundwater authorisations where appropriate.		DOE NIEA	Mar 2013
2	Carry out compliance assessment of 2 private sewage consented discharges.		DOE NIEA	Mar 2013
A number of catchment wide actions also apply to this water body. These can be found on Page 10.				

UKGBNI1NB030301211		Breckagh Water	2009 Status: Moderate	
	Action to be taken		Action to be taken by	Target Date
1	Carry out a visual inspection of WWTW at Killramer.		DOE NIEA	Completed
2	Carry out compliance assessment at Ballinmore WWTW.		DOE NIEA	Mar 2013
3	Assess significance of sheep dip usage and review groundwater authorisations where appropriate.		DOE NIEA	Mar 2013
A number of catchment wide actions also apply to this water body. These can be found on Page 10.				

UKGBNI1NB030301146		Glenlough River	2009 Status: Moderate	
	Action to be taken		Action to be taken by	Target Date
1	Carry out a visual inspection of WWTW at Garryduff.		DOE NIEA	Completed
2	Carry out agricultural advisory site visits as part of pollution prevention work.		DOE NIEA	Mar 2013
3	Carry out a river walk from Glenlough Road to Kilraghts Road to identify sources of pollution impacting on the aquatic invertebrate life.		DOE NIEA	Mar 2013
4	Conduct invasive alien species recording during river walks and raise awareness on how to prevent the spread of invasive alien species.		DOE NIEA	Mar 2013

[A number of catchment wide actions also apply to this water body. These can be found on Page 10.](#)

UKGBNI1NB030301220		Ballymoney River	2009 Status: PEP	
	Action to be taken		Action to be taken by	Target Date
1	Assess sources of organic pollution including agriculture, NIW intermittent discharges, WWTW, sewage pumping stations and septic tanks (domestic and private).		DOE NIEA	Mar 2013
2	Carry out a visual inspection of WWTW at Coldagh.		DOE NIEA	Mar 2013
3	Carry out compliance assessment of Industrial consented discharges including site drainage, a vehicle wash, car dismantlers premises and 2 private sewage discharges.		DOE NIEA	Mar 2013
4	Carry out full RHAT assessment to ground truth Heavily Modified Water Body status (River Hydromorphology Assessment Technique).		DOE NIEA	Completed
5	Carry out a river walk from confluence of Breckagh Burn with Ballymoney River to Milltown Bridge to assess impact on aquatic invertebrate life.		DOE NIEA	Mar 2013
6	Carry out a river walk from Milltown Bridge to Sloan's Bridge to assess impact on aquatic invertebrate life.		DOE NIEA	Mar 2013
7	Carry out a river walk from Sloan's Bridge to confluence with Drumawhiskey River to assess impact on aquatic invertebrate life.		DOE NIEA	Mar 2013
8	Conduct invasive alien species recording during river walks and raise awareness on how to prevent the spread of invasive alien species.		DOE NIEA	Mar 2013
9	Investigate feasibility and practicality of implementing morphological mitigation measures as recommended by the River Habitat Assessment Technique survey.		DOE NIEA, DARD Rivers Agency	Dec 2015

[A number of catchment wide actions also apply to this water body. These can be found on Page 10.](#)

UKGBNI1NB030301147		Drumawhiskey River	2009 Status: Poor	
	Action to be taken		Action to be taken by	Target Date
1	Conduct biological investigations to assess aquatic invertebrates in Bendooragh Burn, Tullaghans bridge, Claughy Bridge, Moneycannon bridge, Drumawhiskey River and Burnside.		DOE NIEA	Completed
2	Assess sources of organic pollution from Bendooragh and Drumawhiskey WWTW.		DOE NIEA	Mar 2013
3	Assess forestry operations in Craigs. Ascertain felling programme in the catchment and engage with forestry technical field staff to ensure measures are in place to mitigate risks from felling.		DOE NIEA	Mar 2013
4	Assess sources of organic pollution from agriculture in mid reach of the water body.		DOE NIEA	Mar 2013
5	Carry out a river walk from Drumawhiskey Bridge to Ballymoney River to investigate polluting impacts on aquatic invertebrates.		DOE NIEA	Mar 2013
6	Conduct invasive alien species recording during river walks and raise awareness on how to prevent the spread of invasive alien species.		DOE NIEA	Mar 2013
7	Carry out pollution prevention and enforcement measures at identified sites from biology investigation and river walk.		DOE NIEA	Mar 2012
A number of catchment wide actions also apply to this water body. These can be found on Page 10.				

UKGBNI1NB030301065		Ballymoney River	2009 Status: Poor	
	Action to be taken		Action to be taken by	Target Date
1	Investigate failure of aquatic invertebrates in this stretch of the river.		DOE NIEA	Mar 2013
A number of catchment wide actions also apply to this water body. These can be found on Page 10.				

UKGBNI1NB030301219		River Bann tributary	2009 Status: Moderate	
	Action to be taken		Action to be taken by	Target Date
1	Carry out a visual inspection of WWTW at Fish Loughan.		DOE NIEA	Mar 2013
2	Carry out compliance assessment of private sewage consented discharge.		DOE NIEA	Mar 2013
3	Assess forestry operations in Garry Wood. Ascertain felling programme in the catchment and engage with forestry technical field staff to ensure measures are in place to mitigate risks from felling.		DOE NIEA	Mar 2013

[A number of catchment wide actions also apply to this water body. These can be found on Page 10.](#)

UKGBNI5NB010010		Bann Estuary	2009 Status: MEP or Worse	
	Action to be taken		Action to be taken by	Target Date
1	Assess sources of organic pollution.		DOE NIEA	Mar 2013

[A number of catchment wide actions also apply to this water body. These can be found on Page 10.](#)

UKGBNI1NB030301223		Lodge Burn	2009 Status: Bad	
	Action to be taken		Action to be taken by	Target Date
1	Carry out a river walk from the Industrial Estate to the Leisure Centre car park to investigate impacts on the aquatic invertebrate life.		DOE NIEA	Mar 2013
2	Assess sources of organic pollution including agriculture, NIW intermittent discharges, WWTW, sewage pumping stations and septic tanks (domestic and private).		DOE NIEA	Mar 2013
3	Assess sources of oil contamination particularly relating to the Industrial Estate near the Causeway Coast Hospital.		DOE NIEA	Mar 2013
4	Carry out compliance assessment of 4 Industrial consented discharges including a Creamery, and Site drainage at 3 premises.		DOE NIEA	Mar 2013
5	Undertake river restoration project in connection with a flood prevention scheme.		DARD Rivers Agency	Mar 2013
6	Carry out a visual inspection of WWTW at Boghill.		DOE NIEA	Mar 2013
7	Conduct invasive alien species recording during river walks and raise awareness on how to prevent the spread of invasive alien species.		DOE NIEA	Mar 2013

[A number of catchment wide actions also apply to this water body. These can be found on Page 10.](#)

UKGBNI1NB030301222		Ballysally Burn Bann	2009 Status: Bad	
	Action to be taken	Action to be taken by	Target Date	
1	Conduct biological investigations to assess aquatic invertebrates in Dundooan Feeder.	DOE NIEA	Completed	
2	Assess sources of organic pollution including septic tanks and sewage misconnections.	DOE NIEA	Mar 2013	

[A number of catchment wide actions also apply to this water body. These can be found on Page 10.](#)

UKGBNI1NB030301071		Bann Brook	2009 Status: PEP	
	Action to be taken	Action to be taken by	Target Date	
1	Carry out a visual inspection of WWTW at Bellany.	DOE NIEA	Mar 2013	
2	Assess forestry operations in Springwell Forest. Ascertain felling programme in the catchment and engage with forestry technical field staff to ensure measures are in place to mitigate risks from felling.	DOE NIEA	Mar 2013	
3	Investigate identified water quality impacts in connection with water abstraction.	DOE NIEA	Mar 2013	

[A number of catchment wide actions also apply to this water body. These can be found on Page 10.](#)

UKGBNI1NB030301221		Articlave River	2009 Status: Poor	
	Action to be taken	Action to be taken by	Target Date	
1	Assess forestry operations in Grange and Springwell. Ascertain felling programme in the catchment and engage with forestry technical field staff to ensure measures are in place to mitigate risks from felling.	DOE NIEA	Mar 2013	
2	Investigate identified water quality impacts due to abstraction to Ballinrees.	DOE NIEA	Mar 2013	
3	Assess significance of sheep dip usage and review groundwater authorisations where appropriate.	DOE NIEA	Mar 2013	
4	Carry out a river walk from Ballywildrick Bridge to main river to investigate impacts on the aquatic invertebrate life.	DOE NIEA	Mar 2013	
5	Conduct invasive alien species recording during river walks and raise awareness on how to prevent the spread of invasive alien species.	DOE NIEA	Mar 2013	

[A number of catchment wide actions also apply to this water body. These can be found on Page 10.](#)

UKGBNI6NB010		Portstewart Bay	2009 Status: Good	
	Action to be taken		Action to be taken by	Target Date
1	Maintain current regulatory controls as water body status is Good or better.		DOE NIEA	Mar 2013
2	Provide advice on protected area designations including Benone (Magilligan), Castlerock, Portstewart and Portrush (Mill Strand) bathing water protected areas.		DOE NIEA	Mar 2013

[A number of catchment wide actions also apply to this water body. These can be found on Page 10.](#)

What other measures are being implemented to maintain and improve the water environment in the Lower Bann LMA?

The programme of measures described in the Neagh Bann River Basin Management Plan has been categorised into two types of measures: existing and planned and supplementary. Existing and planned measures aim to ensure that existing water uses are appropriately managed and that the water environment remains at good status.

Existing and planned measures include those which have been put in place to meet legal requirements. Those which apply in this LMA include:

- The Birds Directive (79/409/EEC);
- The Drinking Water Directive (80/778/EEC) as amended by Directive (98/83/EC);
- The current Bathing Water Directive (76/106/EEC) and revised Bathing Water Directive (2006/7/EEC);
- The Environmental Impact Assessment Directive (85/337/EEC);
- The Urban Waste-water Treatment Directive (91/271/EEC);
- The Sewage Sludge Directive (86/278/EEC);
- The Major Accidents Directive (96/82/EC);
- The Plant Protection Products Directive (91/414/EEC);
- The Nitrates Directive (91/676/EEC);
- The Habitats Directive (92/43/EEC); and
- The Integrated Pollution Prevention Control Directive (96/61/EC).

A number of other existing and planned measures apply in this LMA:

- Cost recovery for water use and promotion of efficient and sustainable water use;
- Point source and diffuse source discharge control;
- Abstraction and Impoundment Control;
- Protection of drinking water sources;
- Controls on physical modifications to surface waters;
- Prevention or reduction of the impact of accidental pollution incidents;
- Authorisation of discharges to groundwater;
- Priority substances control;
- Controls on other activities impacting on water status;
- Controls to avoid increase in pollution of marine waters.

Further information on existing and planned measures for each sector is available on the programme of measures section of the website.

Supplementary Measures are a number of NI wide measures which were agreed by all relevant Departments and Agencies in Northern Ireland including DCAL, DARD, DOE, DRD, Loughs Agency and NI Water and published as part of the RBMPs. Supplementary measures have been identified for the following sectors:

- Abstraction and flow regulation;

- Diffuse and point source (Agriculture, Collection & treatment of sewage, Urban Development, Forestry, Industry and other businesses, Waste);
- Freshwater Morphology and Marine Morphology;
- Invasive Alien Species and
- Other.

Progress on the implementation of these supplementary measures listed in the RBMPs will be reported to the European Commission in December 2012. This LMA action plan forms one of these supplementary measures for the Neagh Bann RBD and includes a number of others where relevant.

What measures are agreed for water dependent Natura 2000 sites in unfavourable condition?

Special Areas of Conservation (Habitats Directive) and Special Protection Areas (Birds Directive) are assessed as being in favourable or unfavourable condition. These areas have been examined to determine if water dependent features are present.

Dead Island Bog and Wolf Island Bog Special Areas of Conservation are in favourable condition. There are no specific measures for the Bann Estuary Special Area of Conservation as there are no water related adverse activities causing this condition assessment of the water dependent features. The Carn-Glenshane Pass Special Area of Conservation, Table 2, has water dependent features which are in unfavourable condition.

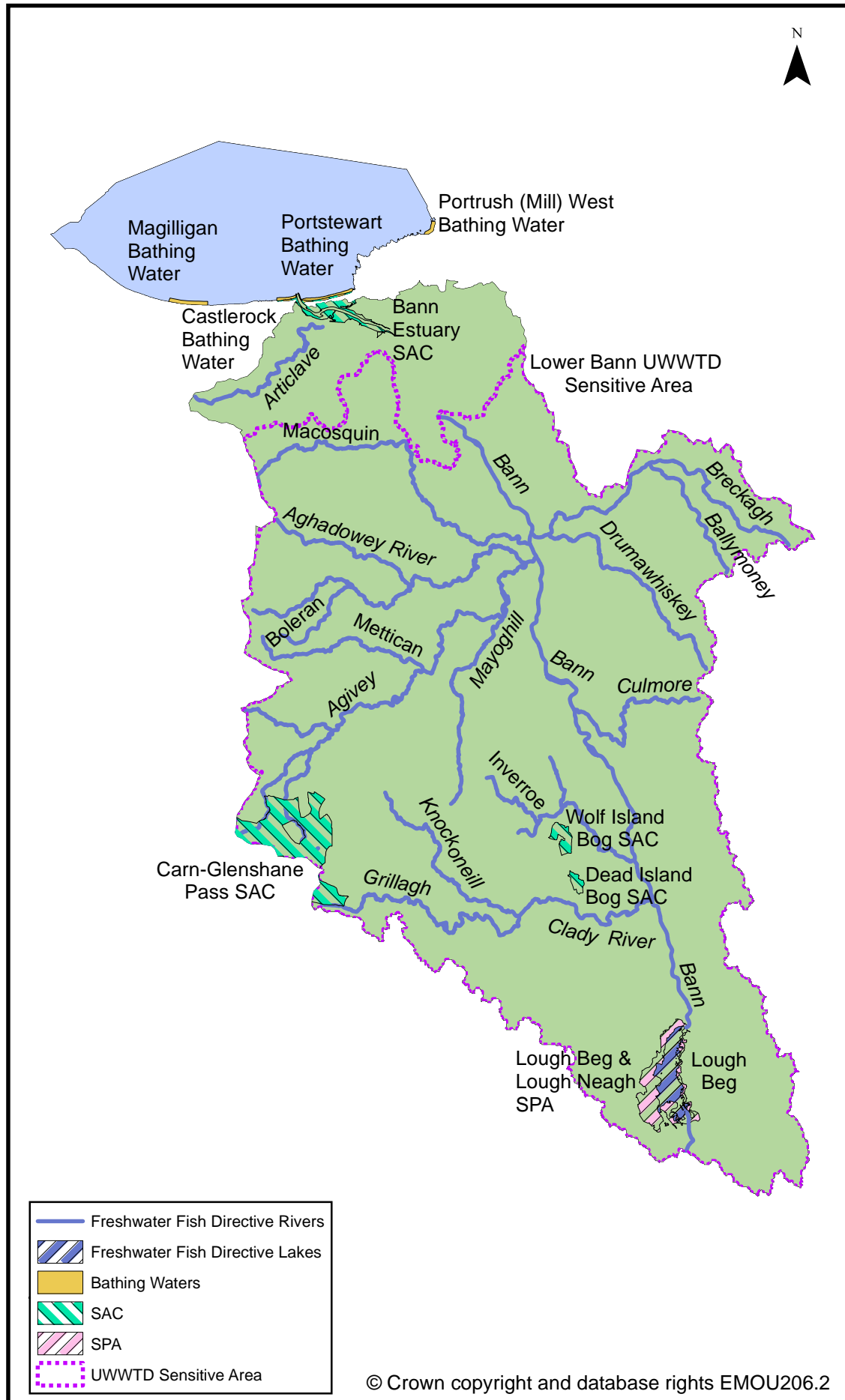
Table 2: Measures for water dependent features of Special Areas of Conservation

Name	Current condition assessment of water dependent features	Measures in place
Carn-Glenshane Pass	Blanket bogs unfavourable due to water management (including drainage, dredging or alterations to the water table) and also over-grazing (including deer browsing)	There are currently 2 MOSS agreements for the site There are also 9 NICMS referrals from DARD

Lough Neagh and Lough Beg Special Protection Area are in unfavourable condition. Unfavourable Special Protection Areas require investigation to identify external and internal factors. The issues are unclear; may be changes in migratory patterns, disturbance to high tide roost sites, water quality and/or ecological factors. Further details on Special Areas of Conservation and Special Protection Areas in the Lower Bann LMA are available in the protected areas section of the NIEA website.

This page is intentionally blank.

Map 3: Protected Areas in Lower Bann LMA



Protected Areas in the Lower Bann LMA

The LMA supports important habitats and wildlife. These areas have been designated under European Directives and require special protection. The protected areas are summarised in Table 3 and illustrated in Map 3.

Table 3: Protected areas in Lower Bann LMA

Protected Area Type	Location
<p>Waters used for the abstraction of drinking water (drinking water protected areas)</p>	<p>There are no drinking water protected areas.</p>
<p>Areas designed to protect economically significant aquatic species</p> <p>Freshwater Fish Directive (78/659/EEC)</p> <p>Shellfish Waters Directive (79/923/EC)</p>	<p>There are 307 km of river and 4.7km² of lake (Lough Beg) identified under the Freshwater Fish Directive, all designated Salmonid.</p> <p>There are no designated shellfish waters.</p>
<p>Bathing Waters</p> <p>These are bathing waters identified under the Bathing Waters Directives (76/160/EEC)</p>	<p>There are 4 identified bathing waters; Magilligan, Castlerock, Portstewart and Portrush (Mill) West.</p>
<p>Nutrient Sensitive Areas</p> <p>Areas designated as sensitive under the Urban Waste Water Treatment Directive (91/271/EEC) and the Nitrates Directive (91/676/EEC)</p>	<p>There is 1 Urban Waste Water Treatment Directive sensitive area; Lower Bann.</p> <p>A total territory approach has been adopted in Northern Ireland for the Nitrates Directive.</p>
<p>Areas designated for the protection of habitats or species (Natura 2000 sites)</p> <p>These are areas designated for the protection of habitats or species where the maintenance or improvement of the status of water is an important factor in their protection.</p> <p>Habitats Directive (92/43/EEC)</p> <p>Birds Directive (79/409/EEC)</p>	<p>There are 4 water dependent Special Areas of Conservation within the Lower Neagh Bann LMA; Bann Estuary, Dead Island Bog, Wolf Island Bog and Carn-Glenshane Pass.</p> <p>There is 1 Special Protection Area; Lough Neagh and Lough Beg.</p>

Abbreviations

Term	Explanation
AFBI	Agri-Food and Biosciences Institute
DARD	Department of Agriculture and Rural Development
DCAL	Department of Culture, Arts and Leisure
DOE	Department of the Environment
DRD	Department of Regional Development
EP	Ecological Potential – the status of a heavily modified water body measured against the maximum ecological quality it could achieve given the constraints imposed upon it by those heavily modified characteristics necessary for its use. There are four classes for the status of heavily modified water bodies: good ecological potential or better (GEP), moderate ecological potential (MEP), poor ecological potential (PEP) and bad ecological potential (BEP).
GSNI	Geological Survey of Northern Ireland
LMA	Local Management Area
MOSS	Management of Sensitive Sites
NICMS	Northern Ireland Countryside Management Scheme
NIEA	Northern Ireland Environment Agency
NIWL	Northern Ireland Water Limited
RBP	
WWTW	Waste Water Treatment Works

Working together to implement the Local Management Action Plan.

If you would like to get involved, find out more about the plans, or are carrying out work that will assist in protecting the water environment let us know at the Lower Neagh Bann Catchment Stakeholder Group meetings or by contacting the Catchment Management Officer, Gerry Wilson.

Email: gerry.wilson@doeni.gov.uk

Telephone: 028 9262 3219.

Further details are available at www.doeni.gov.uk/niea/neagh-workingtogether

Water Pollution Hotline:

***Freephone 0800 80 70 60**

This line is manned 24 hours a day, 7 days a week.

*Mobile calls are charged at standard network rates.

If you become aware of a water pollution incident please call the Water Pollution Hotline in confidence giving the location and nature of the pollution.



Our aim is to protect, conserve and promote the natural environment and built heritage for the benefit of present and future generations.

Northern Ireland Environment Agency
Water Management Unit
17 Antrim Road
Lisburn
BT28 3AL
T. (028) 9262 3004
www.doeni.gov.uk/niea