

Significant Water Management Issues

# Derg and Mourne Local Management Area Action Plan and Update

December 2013

- These LMA action plans are working documents which will evolve as new projects are committed to over time during the River Basin Planning cycle
- This summary provides an update on operational actions in the LMA. Many actions are based on implementation meetings with Upper Foyle Catchment Stakeholder Group members in 2011/2012
- If you, as an individual or organisation, can input additional information on actions or projects in the Derg and Mourne Action Plan please contact [Steven.McDowell@doeni.gov.uk](mailto:Steven.McDowell@doeni.gov.uk) or telephone 028 92 623114

	LMA Action	Progress Report
1	Complete desktop study and risk analysis using available catchment data to identify areas under pressure and allow further investigations on the ground to be carried out.	Data scrutiny completed by WMU water quality planners resulting in a comprehensive desktop study and risk analysis. Analysis of local data from different WMU teams, including historical monitoring data (biology/chemistry), occurrence of pollution incidents land use, run-off risk, soil type, soil cohesion
	Carry out monitoring and assessment to identify and address pressures throughout the Derg and Mourne LMA.  Conduct biological investigations to assess aquatic invertebrates	21 additional Biological sampling sites in summer of 2011.  River walks were identified in these areas and some pollution incidences were investigated
2	Carry out pollution prevention and enforcement measures, if necessary, to resolve localised pollution problems identified when carrying out river walks in the Killen Burn, Derg River 1 (Lower), Cavanalee River	Pollution incidences <ul style="list-style-type: none"> <li>• Killen Burn <ul style="list-style-type: none"> <li>2 Agricultural Incidences. One resulting in a breach and fine of £1,000.</li> <li>1 septic tank issue. Remedial advice given</li> </ul> </li> <li>• Derg River 1 (Lower) <ul style="list-style-type: none"> <li>2 Agricultural Incidences. In one landowner breached under Single Farm Payment. In the 2<sup>nd</sup> the landowner was breached Under Cross Compliance.</li> </ul> </li> <li>• Cavanalee River <ul style="list-style-type: none"> <li>2 Agricultural Incidences <ul style="list-style-type: none"> <li>1 -The polluter was fined £1500 in court and breached under the Nitrates Directive</li> <li>1 Other – advice given at time</li> </ul> </li> </ul> </li> <li>• Shanaghy Burn <ul style="list-style-type: none"> <li>1 Agricultural Incidence. Landowner given advice by NIEA and DARD and warned about future discharges</li> </ul> </li> </ul>

	LMA Action	Progress Report
3	Carry out monitoring and assessment on a catchment scale by developing the concept of a SCAMP for the Derg Catchment	Initial discussions with NIW on possible pilot project. Meeting was at the end of summer 2012.
4	Carry out pre and post fish habitat improvement works survey where funding is committed for works.	Ongoing when funding available
5	Carry out fish monitoring and assessment for annual report on catchment status and WFD fish monitoring programme.	Loughs Agency – completed on an annual basis <a href="http://www.loughs-agency.org/fs/doc/publications/river-derg-and-tributaries-catchment-status-report-2011.pdf">http://www.loughs-agency.org/fs/doc/publications/river-derg-and-tributaries-catchment-status-report-2011.pdf</a>
6	Continue to monitor mitigation measures through Drinking Water Inspectorate regulatory processes within this catchment	There are no enforcement processes in place within this catchment. The only regulatory process in place is the requirement to undertake a risk assessment of the catchment (Issue 003 provided to DWI on 23/12/11). The assessment identifies the high risk of pesticides within the catchment and details mitigation as (i) NIW liaison with NIEA through Pesticide and Catchment Management Group, (ii) Increased monitoring for pesticides within the R. Derg, (iii) Pesticide Awareness Workshop held Mar 2011 with key stakeholders, (iv) Derg Pesticide Sub-group (chaired by NIW) in place with a 3-5 year programme to look at ways to control use in catchment and education/information mechanisms (last meeting 8/05/12), and (v) increased monitoring for pesticides (mainly MCPA) being undertaken by NI Water within the catchment.
7	Identification of contamination risks from 'source to tap' through the development of drinking water safety plans for the Derg catchment	Drinking Water Safety Plans are being developed by NIW. Meeting on pesticide detections in drinking water catchments planned for November 21 <sup>st</sup> 2012. Pesticide Working Group established with representation from NIW, DARD, UFU, NIEA, DWI, Road Service, Forest Service, CAFRE and AFBI. Through the 'Pesticide Working Group' have published NIW leaflet 'Using pesticides....Stop and think about the water you drink' and an NIEA factsheet. UFU sourced pesticide awareness leaflets from the Voluntary Initiative. NIEA published folders for the dissemination of the pesticide educational materials.  'Focus' catchment in Derg but will extend to other drinking water catchments.

	LMA Action	Progress Report
8	Ensure that licences for new and existing hydro power developments are compliant with the Water Framework Directive and Habitats Regulations to support good ecological status and carry out risk based compliance visits.	The Water Abstraction and Impoundment (Licensing) Regulations (Northern Ireland) 2006 came into operation on 1 February 2007. The purpose of the Regulations is to control the abstraction and impoundment of water by means of a licensing regime. All licences are assessed through a combination of factors which will determine whether a scheme is environmentally acceptable; however, each scheme is assessed on a site specific basis. The guidance document is linked below: <a href="http://www.doeni.gov.uk/niea/guidance_for_run-of_river_hydropower_schemes_in_northern_ireland_.pdf460kb_.pdf">http://www.doeni.gov.uk/niea/guidance_for_run-of_river_hydropower_schemes_in_northern_ireland_.pdf460kb_.pdf</a>
9	Conduct a water resource assessment to inform an ongoing review of abstraction licences within Northern Ireland.	Ongoing - The Agency will continue to monitor flows within the catchment through a combination of the river flow gauging network, spot gauging and modeling. Existing licence holders will also be required to make monitoring returns on their abstracted volumes.
10	Complete the phosphorus nutrient budget work for Northern Ireland to establish nutrient inputs from different sectors.	Nutrient budgets are being analysed alongside SIMCAT (SIMulation of the water quality of CATchments) models developed to represent the behaviour of flow and pollutants in rivers. This will inform actions to address diffuse and point source nutrient inputs to the water environment.
11	Create an inventory of physical structures within the river channel and bank structures to ensure required standards are met	NIEA staff have been trained in the use of this tool and are beginning to carry out assessments. If you are aware of any barriers in the Derg and Mourne and would like to have this assessed using the UK Fish Passability Tool please contact your Catchment Officer.  Loughs Agency have mapped all potential barriers to fish migration in the Derg River
12	Review Rivers Agency's annual watercourse maintenance program and work closely on the flood bank work on the lower stretches of the Derg and Mourne to ensure minimal impact on water quality.	Quarterly meetings with Rivers Agency and DCAL to discuss maintenance programme and any other projects

	LMA Action	Progress Report
13	Review of groundwater abstraction and planning applications where necessary.	On-going. The groundwater team is a regular consultee on groundwater abstractions and planning applications for all of Northern Ireland.
14	Develop leaflets and articles to promote effective farm nutrient and waste Management.	<p>Pesticide Working Group – NIW, UFU, DARD, CAFRE, AFBI, Rivers Agency, Loughs Agency and NIEA and they raise awareness of the problem with pesticide detections in Drinking Water Catchments.</p> <p>Through the 'Pesticide Working Group' have developed a Pesticide flyer. NIW published 'stop and think about the water you drink' under the same group. UFU sourced pesticide awareness leaflets from the Voluntary Initiative.</p> <p>'Landowner's Awareness – Improving Water Quality in your local area' leaflet developed in conjunction with DARD, UFU and Loughs Agency.</p> <p>NIEA attended the Horticultural Show at Greenmount to promote Pesticide issues.</p> <p>The Water Catchment Partnership was established NIW, UFU, DARD, CAFRE, The Voluntary Initiative, DOE and NIEA to proactively work together to promote and raise awareness of best practice when using pesticides in the garden or on the farm.</p> <p>Attended agricultural shows – Omagh and Clogher Valley.</p>
15	Raise awareness and promote the benefits of effective farm nutrient and waste management.	<p>All applicants to DARD Agri-Environment Schemes receive farm waste management advice as part of their application to the scheme. DARD has produced a 'Code of Good Agricultural Practice' which contains practical management advice on how farm wastes can be collected, stored and spread with minimal risk to the environment. Production of 'Improving Water Quality' leaflet for Landowners.</p> <p>This leaflet has been developed jointly with Loughs Agency, UFU and DARD to raise awareness amongst the agricultural sector. The issues were initially raised through the implementation meetings eg gravel removal, river litter.</p> <p>DARD has developed an agri-environment training course for farmers dealing with farm wastes and nutrient management planning.</p> <p>Water Framework Directive awareness talk given to CAFRE students in April 2011. Farm Nutrient and Waste Management Planning talk given to CAFRE students April 2012.</p> <p>Joint leaflet published.</p> <p>'Water Quality Plans in Action' article published in Farming Life Oct 2012</p>

	LMA Action	Progress Report
16	Encourage riparian zone management with an aim to improve biodiversity and minimise sedimentation through practical management measures on farms.	A measure within the Nitrates Action Programme is that all farms must carry out crop and soil management to minimise soil erosion and nutrient runoff. This is verified during cross-compliance visits.
17	Promote riparian zone management project opportunities such as buffer zone creation, fencing, native species planting and in- channel habitat improvements including spawning bed and nursery habitat improvement.	Loughs Agency and Pettigo District Angling Association continued with their ongoing project - The Lough Derg Wild Trout Conservation Project. Other projects ongoing.
18	Carry out fish monitoring and assessment to assess migration of Lough Derg trout downstream into the River Derg	<ul style="list-style-type: none"> <li>• Leaghany River</li> <li>• Derg River 4 (Upper)</li> </ul> Loughs Agency and Pettigo District Angling Association continued with their ongoing project - The Lough Derg Wild Trout Conservation Project.
19	Provide advice on protected area designations to work towards improving unfavourable condition assessments.	<p>Natural Heritage regulates activities that may have an adverse impact on aquatic designated sites through the planning system as well as the consent/assent process. They do this through the implementation of the Environment (Northern Ireland) Order 2002 and the Conservation (Natural Habitats, etc.) Regulations (Northern Ireland) 1995 (as amended).</p> <p>Page 9 of the LMA information leaflet produced for Derg and Mourne states the existing and planned measures which will be implemented in order to maintain and improve the water environment. Many of these measures will be carried out by NH through the implementation of the aforementioned regulations.</p>
20	Highlight external funding opportunities for water management projects to local partners.	<p>Stakeholders informed about NIEA's Water Community Award. Also informed about launch of NIEA's Water Quality Improvement Grant Scheme <a href="http://www.doeni.gov.uk/niea/water-home/wfd/water_quality_improvement_grant.htm">http://www.doeni.gov.uk/niea/water-home/wfd/water_quality_improvement_grant.htm</a></p> <p>Minister Mark Durkan announced Challenge Fund on 18<sup>th</sup> October 2013. Provides funding for communities and organisations to develop local environmental projects. £1.2 million being funded (NIEA and Forest Service) <a href="http://www.nienvironmentlink.org/projects/nieachallengefund.php">http://www.nienvironmentlink.org/projects/nieachallengefund.php</a></p>

	LMA Action	Progress Report
21	Support pollution prevention campaigns such as 'Reduce Reuse Recycle', 'Bag It & Bin It', 'Stop and Think (Not Down the Sink)', 'Stop and think (about the water you drink)'.	<p>NIEA incorporates the 'Reduce Reuse Recycle', 'Bag It &amp; Bin It', 'Stop and Think (Not down the Sink)' messages in our information leaflets and promotes these philosophies during engagement with the public.</p> <p>NIEA in conjunction with Northern Ireland Water, have produced an information leaflet to highlight the dangers of pesticides around waterways and the potential impacts on wildlife and drinking water.</p> <p>These messages are promoted at events and functions.</p>
22	Promote the NIEA Water Pollution Hotline through increased advertising, promotion and waterside signage throughout the LMA.	<p>Identifying location of pollution hotline signs throughout the Derg and Mourne LMA in co-operation with angling clubs and local groups.</p> <p>7 Pollution hotline signs at present are throughout the catchment</p> <ul style="list-style-type: none"> <li>• D&amp;Mo1 Tullnashane Bridge – Pettigo District Anglers Association</li> <li>• D&amp;Mo2 Killeter Bridge – Castlederg Anglers</li> <li>• D&amp;Mo3 Creeduff Bridge</li> <li>• D&amp;Mo4 Castlederg Bridge – Castlederg Anglers</li> <li>• D&amp;Mo5 Spamount Footbridge</li> <li>• D&amp;Mo6 Ardstraw Bridge</li> <li>• D&amp;Mog Swinging Bridge at Sionmills</li> </ul>
23	Promote public participation and raise awareness of catchment management issues by release of relevant press articles and web publication of LMA e-zines	Updated on a regular basis on the web site and through local newspapers re local events.

	LMA Action	Progress Report
24	<p>Support local measures that will improve water quality, in particular, reduction in the pressure of pesticides and the levels of organic matter in raw water which cause implications for water treatment at Castledearg water treatment works.</p>	<ul style="list-style-type: none"> <li>• Derg River 1 (Lower)</li> </ul> <p>The establishment of the Derg Pesticide working group whose actions to be taken to help to improve WQ.</p> <ul style="list-style-type: none"> <li>• Protection of the Drinking Water Supply to consumers – “Source to Tap”</li> <li>• Stakeholders Working together to identify activities that represent the greatest risk to water supplies</li> <li>• Understand the risks in the catchment and develop mitigation strategies to reduce the amount of pesticide entering the water environment</li> <li>• Raise Awareness of the risk to the drinking water supply from pesticide use by all stakeholders</li> <li>• Promote good practice in the use and handling of pesticide products</li> <li>• Raise awareness on the quantity and frequency of use of pesticides <ul style="list-style-type: none"> <li>- to keep applications as low as reasonably practicable</li> <li>- promote potential cost savings to the user though better timing of applications, in the right amount and where needed</li> </ul> </li> <li>• Stakeholders in the group include - NI Water, NIEA, AFBI, Drinking Water Inspectorate (DWI), Ulster Farmers Union, DARD – Forest Service, DARD – Rivers Agency, DARD – Countryside Management Branch, DRD Roads Service, Loughs Agency, Strabane Council, Donegal County Council and Coillte</li> </ul>



	LMA Action	Progress Report
25	Promote public participation by supporting local community events	<ul style="list-style-type: none"> <li>• Ardstraw event “Life Under the Bridge” Sat 5<sup>th</sup> May 2012 - Ardstraw &amp; District Community Association</li> <li>• Greenmount Centenary Show Sat 16<sup>th</sup> June 2012 – Greenmount</li> <li>• Clipper Event Sat 7<sup>th</sup> July 2012 – Londonderry City Council</li> <li>• Castledearg Anglers Event Sunday 29<sup>th</sup> July 2012 - Castledearg Angling Club Open Day</li> </ul> <p>All events attended were very successful. Positive feedback from the public re Action Plans, displays, Good/Bad bugs as indicator species of pollution.</p> <ul style="list-style-type: none"> <li>• Staff also attended The Balmoral Show 16<sup>th</sup>-18<sup>th</sup> May 2012 and Horticultural Show Greenmount 19<sup>th</sup> Sept 2012.</li> <li>• Staff also attended The Balmoral Show 15<sup>th</sup> July 2013</li> <li>• Clogher Valley Show 31/07/2013 – Raising awareness of pesticides in our catchment and drinking water.</li> <li>• “Source of Dennet to Mouth” – awareness event publicity of Dennet angling group, walk and talk on litter.</li> </ul>
26	Promote public participation and encourage local projects through the Water Community Awards.	<p>Greenshoots with Omagh Integrated Primary School and Pettigo District Angling Association (PDAA) were successfully awarded the £1000 Water Community Awards</p> <ul style="list-style-type: none"> <li>• PDAA – Water for Life – The Derg Valley</li> </ul> <p>The Project will examine the importance of water quality in the Derg valley. It plans to document the water quality by interviewing local people in the area and have their stories available online via a web site.</p>
27	Promote public participation by organising two Catchment Stakeholder Group meetings per year to provide an open forum for discussion on water issues and encourage involvement in developing and implementing the Local Management Area Plan.	<p>The Autumn meeting was on 14<sup>th</sup> October 2013 in Loughmacrory, Omagh. Presentations and minutes of meetings can be found at <a href="http://www.doeni.gov.uk/nea/water-home/wfd/public_partic_3/catchment_stakeholder_groups/upper_foyle.htm">http://www.doeni.gov.uk/nea/water-home/wfd/public_partic_3/catchment_stakeholder_groups/upper_foyle.htm</a></p>

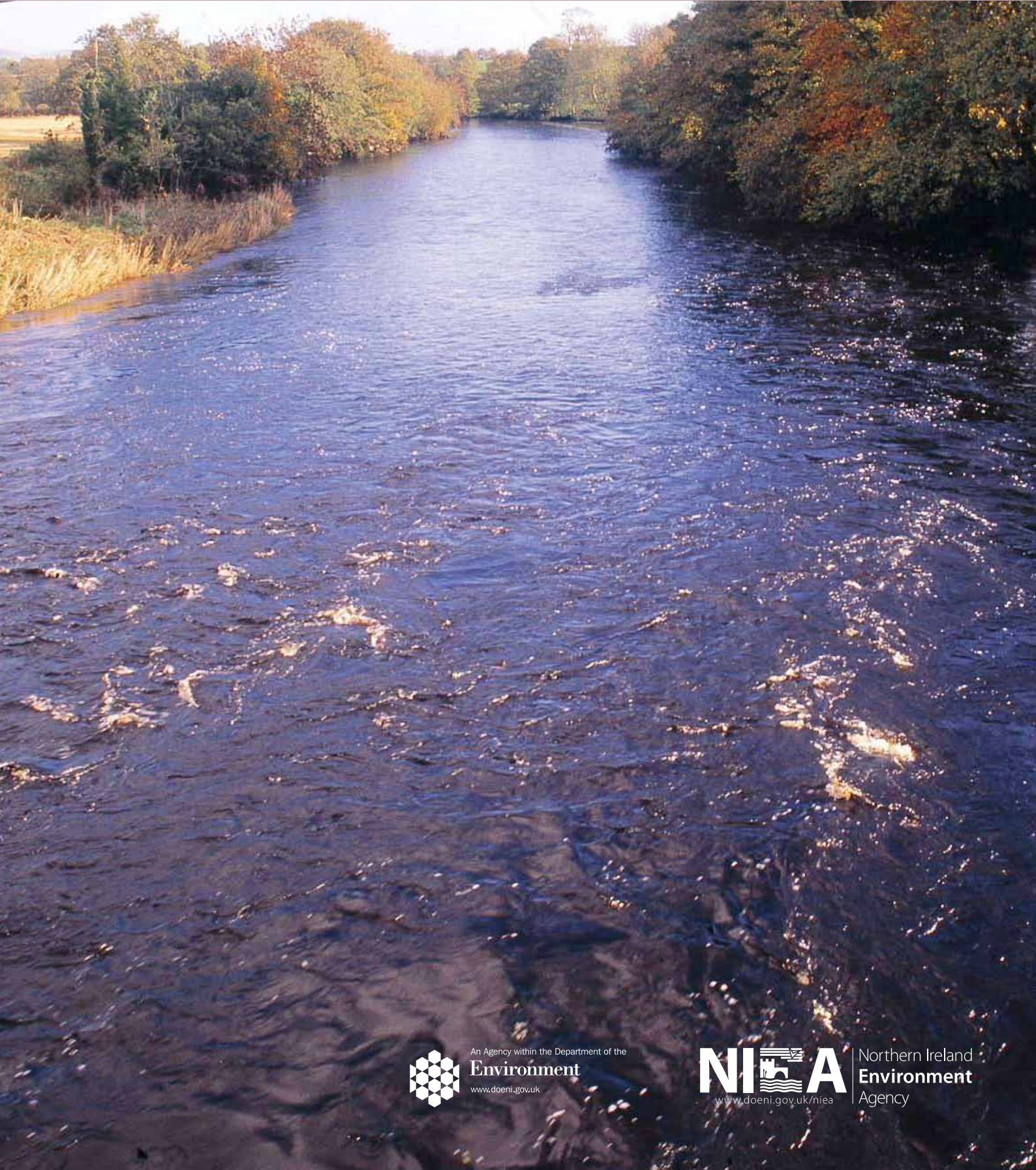
	LMA Action	Progress Report
28	Promote best practice in the use of pesticides through Derg pesticides sub-group to address Derg catchment pesticide detections	Pesticide working Group – consisting of NIW, UFU, DARD(FS, CAFRE, AFBI, CMB) Rivers Agency, DRD, Loughs Agency and NIEA. <ul style="list-style-type: none"> <li>• Target awareness raising</li> <li>• Leaflets to distributors</li> <li>• Web page published</li> </ul> <a href="http://www.doeni.gov.uk/niea/water-home/wfd/public_partic_3/pesticide_awareness.htm">http://www.doeni.gov.uk/niea/water-home/wfd/public_partic_3/pesticide_awareness.htm</a>
29	Promote best practice in the use of pesticides on farms	NIEA attended the Horticultural Show at Greenmount to promote Pesticide issues.
30	Carry out compliance assessment at industrial consented sites, WWTW and cross-compliance inspections at selected farms within the Derg and Mourne LMA.	LMA Cross Compliance inspections by WMU Agricultural Regulations Team In 2011 there were 20 visits and 7 breaches. On-going monitoring and compliance.
31	Upgrading of Waste Water Treatment Works (WWTW)	<ul style="list-style-type: none"> <li>• Spamount, Douglas Bridge, Camus – all Upgraded</li> <li>• Newtownstewart –Inlet area upgraded in past year</li> <li>• Garvetagh – Currently being upgraded</li> <li>• Killeter – Due to be upgraded</li> </ul>
32	Carry out full RHAT assessment (River Hydromorphology Assessment Technique) to assess the hydromorphological classification and produce recommendations at a water body scale.	Completed – Reports available on request.
33	Assess forestry operations, felling and redesign plans to ensure appropriate measures are in place to mitigate risk to adjacent watercourses.	Discussions with Forest Service are ongoing through regular meetings and appropriate measures are incorporated into felling operations to ensure minimal risk to adjacent watercourses.
34	Carry out monitoring and assessment to investigate pH in the Derg catchment	NIEA are carrying out investigative monitoring. Sampling probes have been deployed and the second round of monitoring is underway. The outcome of this investigative work will be in Spring 2013.

	LMA Action	Progress Report
35	Promote riparian zone management to alleviate excessive tunnelling on Leaghany River.	Loughs Agency, RA and Forestry – dealt with under Forest and Water Guidelines.
36	Carry out monitoring and assessment to ascertain the effectiveness of rubble mats in balancing acid pulses in the Leaghany River.	Small scale monitoring programme assessing pH – ongoing Loughs Agency
37	Investigate identified water quality impacts ie elevated copper and zinc levels	<ul style="list-style-type: none"> <li>• Zinc levels in the Glendorgan River</li> <li>• Copper and zinc levels in Shanaghy Burn and Mourne Beg River Upper</li> </ul> Investigative work ongoing
38	Carry out fish habitat improvement works as dictated by business plan/corporate plan to introduce large woody debris in the Glendorgan River	Discussions ongoing – Loughs Agency
39	Carry out fish habitat improvement works as dictated by business plan/corporate plan to augment river gravels previously installed	Spawning gravel introduced October 2011 – Loughs Agency
40	Carry out pollution prevention and enforcement measures to reduce ammonia problems identified in the Derg River 1 (Lower)	WMU and WQI's investigated the ammonia problems in this water body. While not being able to positively identify a source their pro active work halted the ammonia spikes.
41	Conduct invasive alien species recording during river walks and raise awareness on how to prevent the spread of invasive alien species.	<ul style="list-style-type: none"> <li>• During the course of river walks any sightings or suspected sightings of invasive species are collated and reported to Invasive Species Ireland.</li> <li>• Promote invasive species at the Horticultural Show in Greenmount on 17<sup>th</sup> Sept 2012</li> </ul> Loughs Agency have mapped invasive species for the Derg River

	LMA Action	Progress Report
42	<p>Obtain data on reservoir / lake levels, catchment flows and transfers of water from other water body sources to inform the review of the current abstraction / impoundment licence at the –</p> <ul style="list-style-type: none"> <li>• Mourne Beg River Upper</li> <li>• Lower River Derg</li> </ul> <p>Agree monitoring plans and include details on augmented flows returned to the waterway below.</p>	<p>Initial discussions with NIW are on-going.</p>
43	<p>Review the current abstraction licence to finalise maximum abstraction volumes, take account of seasonal variations and ensure the ecological need for compensation flows are fully considered at the –</p> <ul style="list-style-type: none"> <li>• Mourne Beg River Upper</li> <li>• Lower River Derg</li> </ul>	<p>Initial discussions with NIW are on-going.</p>
44	<p>Carry out pollution prevention and enforcement measures, if necessary, to ensure minimal impact of wind farms in the water body.</p>	<ul style="list-style-type: none"> <li>• Killen Burn WQI's will investigate any pollution incidences that have been reported and advice will be given at the time.</li> </ul>

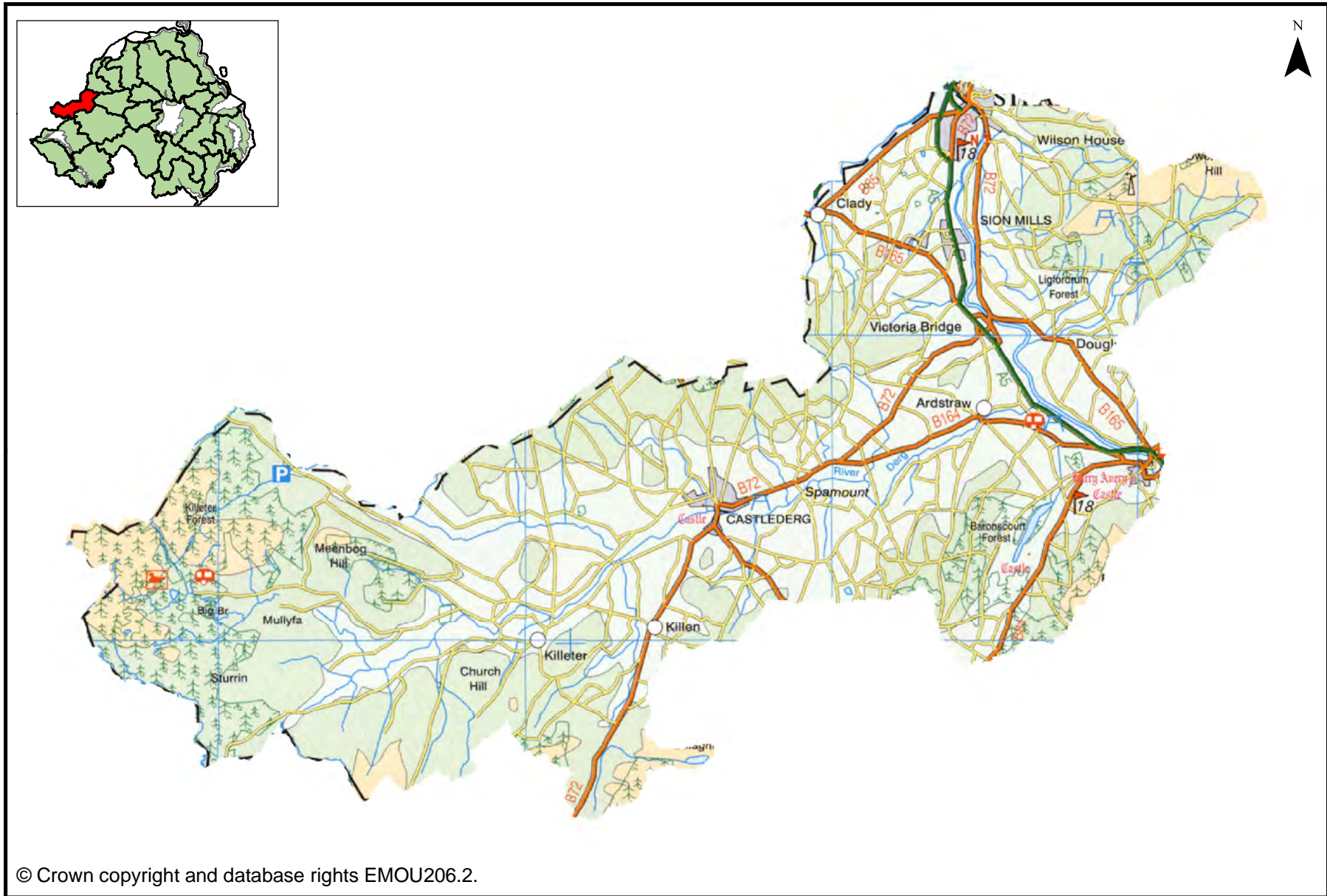


**DERG AND MOURNE**  
Local Management Area





### Map 1: Derg and Mourne Local Management Area



© Crown copyright and database rights EMOU206.2.

## **Introduction**

River Basin Management Plans were published in December 2009. The plans describe where the water environment needs to be protected or improved, the timeframe to make these improvements and how that can be achieved. The plans will be implemented through Local Management Areas (LMAs) during the 2009 to 2015 planning cycle. This Derg & Mourne Local Management Area Action Plan is one of a series of action plans that have been developed for the 26 LMAs across the Neagh Bann, North Western and North Eastern River Basin Districts. The action plan details local measures identified to improve the water environment.

## **Derg & Mourne Local Management Area**

Derg and Mourne LMA (Map 1) is part of the North Western River Basin District and covers an area of approximately 410 km<sup>2</sup>. There are several main rivers in this LMA. These are River Mourne/Strule, River Derg, River Finn and Mourne Beg River.

Strabane, Sion Mills and Castlederg are the largest towns in the area. The land usage is predominantly improved grassland giving way to acid grass, fen, mixed woodland and coniferous woodland west of Killeter.

There are large areas of cut over blanket bog and large expanses of intact bog of national and international importance within the LMA. The area fringes on the Sperrin Area of Outstanding Natural Beauty. The rivers are of international importance for Atlantic Salmon. Other important fish species are also present within this LMA. These include Trout (Sea trout and resident Brown Trout), Sea Lamprey, River/Brook Lamprey, European Eel, Pike and Perch.

The Derg and Mourne LMA supports important habitats and wildlife. These areas have been designated under European Directives and require special protection. Details of the protected areas are summarised in a table at the end of this report.

## **What is the status of the water environment in the Derg & Mourne LMA?**

82.4% of surface water bodies in Derg and Mourne LMA (Map 2) have been classified as less than good status. Many of the rivers failed to achieve good status due to impacted invertebrate and diatom communities and elevated specific pollutant levels.

All groundwater bodies in the LMA are achieving good status.

Three water bodies in the area were identified as being impacted by abstraction and flow regulation. The main rivers affected were Mourne Beg and River Derg. In the Mourne Beg River the impact did not result in a lowering of the overall status and we will continue to monitor this river for any further changes.

A number of biological and chemical water quality elements used in classification can be affected by both diffuse and point source pollution. In this LMA the main impact was seen in the invertebrate communities. This element is associated with organic enrichment and the

rivers affected were the River Derg tributary, Lough Catherine, Shanaghy Burn, Mourne Beg and Cavanalee. There was also evidence of nutrient enrichment within the LMA. The main impact was observed in diatom communities. The rivers affected were Killen Burn, Mourne River and River Derg.

Three river water bodies failed to achieve good status for specific pollutants/priority substances (specifically copper and zinc). It is currently unclear if this is due to natural conditions. The elevated metal levels may be associated with upland peaty soils and granite outcrops. The rivers that were affected were: Shanaghy Burn, Mourne Beg and Glendergan.

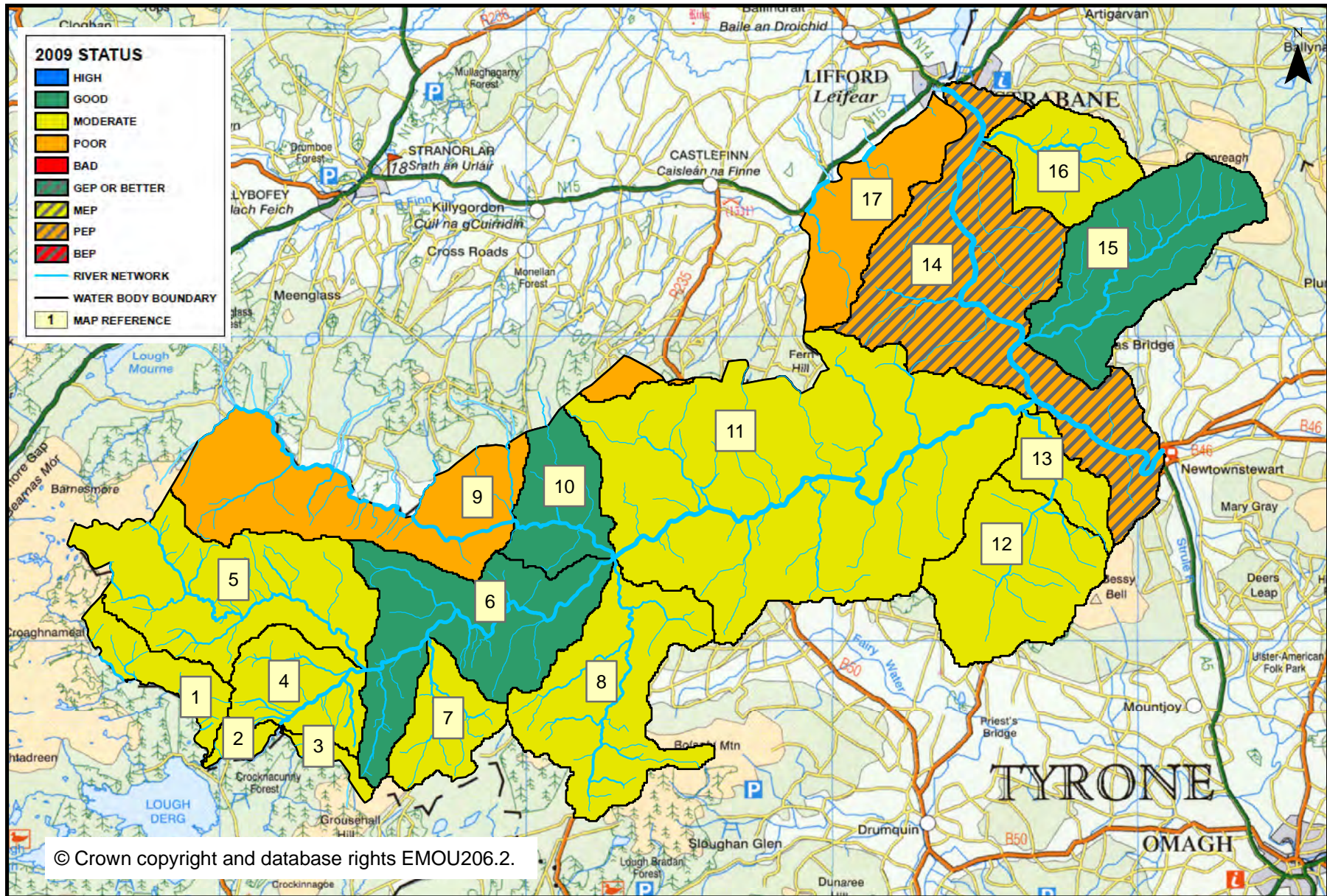
Two water bodies were identified as being affected by changes to morphology (physical habitat). The rivers that were affected were Finn (Foyle) and Mourne. Reaches of the Mourne River are classified as heavily modified due to the presence of weirs and flood control at Strabane.

The water environment in Northern Ireland has been impacted by the introduction of invasive alien species. Species which have already become established in this area include Japanese Knotweed (*Fallopia japonica*) and Himalayan Balsam (*Impatiens glandulifera*).



This page is intentionally blank.

Map 2: 2009 status of surface water bodies in Derg and Mourne LMA



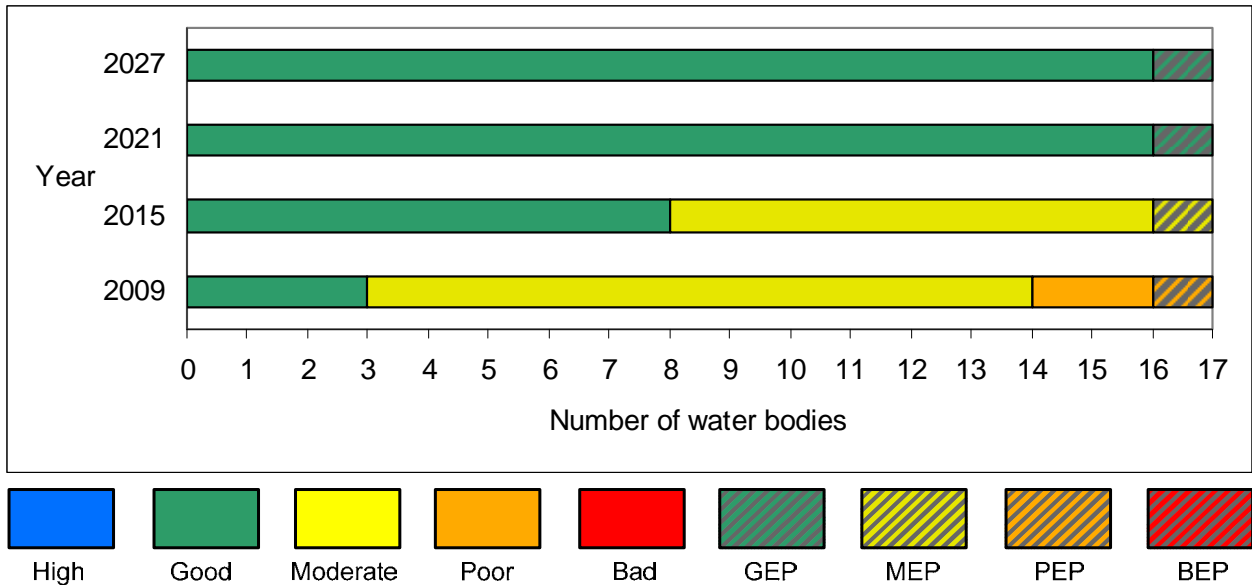
**Table 1: 2009 status and proposed objectives**

Map Reference	Water Body Code	Water Body Name	2009 Status	2015 Objective	Page Number
1	UKGBNI1NW010103064	Leaghany River	Moderate	Moderate	10
2	UKGBNI1NW010102059	Derg River 4(Upper)	Moderate	Moderate	11
3	UKGBNI1NW010103065	Owenboy Burn	Moderate	Moderate	11
4	UKGBNI1NW010102056	Derg River 3	Moderate	Moderate	11
5	UKGBNI1NW010102067	Glendergan River	Moderate	Moderate	12
6	UKGBNI1NW010102094	River Derg	Good	Good	12
7	UKGBNI1NW010102047	Shanaghy Burn (aka Tievemore Burn)	Moderate	Good	13
8	UKGBNI1NW010102050	Killen Burn	Moderate	Good	13
9	UKGBNI1NW010102066	Mourne Beg River Upper	Poor	Moderate	14
10	UKGBNI1NW010102064	Mourne Beg River Lower	Good	Good	14
11	UKGBNI1NW010102095	Derg River 1(Lower)	Moderate	Moderate	15
12	UKGBNI1NW010102016	Lough Catherine	Moderate	Good	16
13	UKGBNI1NW010102005	River Derg Tributary	Moderate	Good	16
14	UKGBNI1NW010102074	Mourne River	PEP	MEP	17
15	UKGBNI1NW010102075	Douglas Burn	Good	Good	17
16	UKGBNI1NW010102077	Cavanalee River	Moderate	Good	18
17	UKGBNI1NW010103063	Finn River	Poor	Moderate	18

### What improvements do we plan to achieve?

We have set environmental objectives to deliver improvements as shown in Figure 1. We aim to achieve good status or better in 47.1% of our surface waters by 2015 and GEP (for Heavily Modified Water Bodies) in 5.9% of our surface waters by 2021. We also aim to maintain good status in 100% of our groundwaters.

**Figure 1: 2009 Status and proposed objectives for surface waters in Derg and Mourne LMA**



### How are we going to maintain and improve the water environment in the Derg and Mourne LMA?

There are a number of actions which will be implemented in the Derg & Mourne LMA in order to maintain and improve the water environment. The list of actions that follows sets out details of actions to be applied throughout the Derg & Mourne LMA. This is followed by specific actions for individual water bodies.

**The actions below apply throughout the LMA.**

	Action to be taken	Action to be taken by	Target Date
1	Complete desktop study and risk analysis using available catchment data to identify areas under pressure and allow further investigations on the ground to be carried out.	DOE NIEA	Completed
2	Carry out monitoring and assessment on a catchment scale by developing the concept of a SCAMP for the Derg Catchment.	NIWL	Mar 2013
3	Carry out agricultural advisory site visits to prevent pollution incidents arising from poor practices.	DARD Countryside Management Branch	Mar 2013
4	Carry out pre and post fish habitat improvement works survey where funding is committed for works.	Loughs Agency, DOE NIEA	Mar 2013
5	Carry out fish monitoring and assessment for annual report on catchment status and WFD fish monitoring programme.	Loughs Agency	Mar 2013
6	Continue to monitor mitigation measures through Drinking Water Inspectorate regulatory processes within this catchment.	DOE DWI	Mar 2013
7	Investigate identified water quality impacts in River Derg and tributaries catchment.	Loughs Agency, DOE NIEA	Mar 2013
8	Identification of contamination risks from 'source to tap' through the development of drinking water safety plans for the Derg catchment.	NIWL	Mar 2013
9	Ensure that licences for new and existing hydro power developments are compliant with the Water Framework Directive and Habitats Regulations to support good ecological status and carry out risk based compliance visits.	DOE NIEA	Mar 2013
10	Conduct a water resource assessment to inform an ongoing review of abstraction licences within Northern Ireland.	DOE NIEA	Mar 2013
11	Complete the phosphorus nutrient budget work for Northern Ireland to establish nutrient inputs from different sectors.	DOE NIEA, AFBI	Mar 2013
12	Create an inventory of physical structures within the river channel and bank structures to ensure required standards are met.	DOE NIEA, Castledearg AC, UAF, Loughs Agency, FASTA	Mar 2013
13	Review Rivers Agency's annual watercourse maintenance program.	DOE NIEA, Rivers Agency	Mar 2013
14	Review of groundwater abstraction and planning applications where necessary.	DOE NIEA, Geological Survey NI	Dec 2015
15	Develop leaflets and articles to promote effective farm nutrient and waste management.	DARD Countryside Management Branch, DOE NIEA	Mar 2013

	Action to be taken	Action to be taken by	Target Date
16	Raise awareness and promote the benefits of effective farm nutrient and waste management.	DARD Countryside Management Branch	Mar 2013
17	Encourage riparian zone management with an aim to improve biodiversity and minimise sedimentation through practical management measures on farms.	DARD Countryside Management Branch	Mar 2013
18	Promote riparian zone management project opportunities such as buffer zone creation, fencing, native species planting and in-channel habitat improvements including spawning bed and nursery habitat improvement.	Loughs Agency	Mar 2013
19	Provide advice on protected area designations to work towards improving unfavourable condition assessments.	DOE NIEA	Mar 2013
20	Highlight external funding opportunities for water management projects to local partners such as the Woodland Trust.	DOE NIEA	Mar 2013
21	Support pollution prevention campaigns such as 'Reduce Reuse Recycle', 'Bag It & Bin It', 'Stop and Think (Not Down the Sink)' and ' Stop and Think (About the Water you Drink)'.	DOE NIEA	Mar 2013
22	Promote the NIEA Water Pollution Hotline through increased advertising, promotion and waterside signage and printing on local angling club tickets.	DOE NIEA, Castlederg AC, Pettigo DAA, FASTA	Mar 2013
23	Promote public participation and raise awareness of catchment management issues by release of relevant press articles and web publication of LMA e-zine.	DOE NIEA	Mar 2013
24	Support local measures that will improve water quality, in particular, reduction in the presence of pesticides and the levels of organic matter in raw water which cause implications for water treatment at Castlederg water treatment works.	DOE DWI, DOE NIEA, NIWL	Mar 2013
25	Promote public participation by supporting local community events..	DOE NIEA	Mar 2013
26	Promote public participation and encourage local projects through Water Environment Community awards.	DOE NIEA	Mar 2013
27	Promote public participation to develop collaborative habitat improvement projects and provide advice and recommendations for in-channel and riparian improvements.	Loughs Agency	Mar 2013
28	Promote public participation by organising two Catchment Stakeholder Group meetings per year to provide an open forum for discussion on water issues and encourage involvement in developing and implementing the Local Management Area Plan.	DOE NIEA	Mar 2013
29	Promote best practice in the use of pesticides through Derg pesticides sub-group to address Derg catchment pesticide detections.	NIWL, DOE NIEA, UFU, DARD, LA, DRD	Mar 2013
30	Promote best practice in the use of pesticides on farms.	DARD Countryside Management Branch	Mar 2013



The actions below apply to individual water bodies in the LMA. The 2009 status or ecological potential is shown for each water body.

UKGBNI1NW010103064		Leaghany River	2009 Status: Moderate	
	Action to be taken		Action to be taken by	Target Date
1	Liaise with ROI organisations to investigate and reduce pressure from potential cross border sources.		DOE NIEA, Loughs Agency, DCC, Coillte	Mar 2013
2	Assess forestry operations, felling and redesign plans for Glenderg and Slievdoe forest to ensure appropriate measures are in place to mitigate risk to adjacent watercourses.		DOE NIEA, DARD Forest Service, Loughs Agency	Mar 2013
3	Carry out fish monitoring and assessment to assess migration of Lough Derg trout downstream into the River Derg.		PDAA, Loughs Agency	Mar 2013
4	Carry out fish habitat improvement works as dictated by business plan/corporate plan.		Loughs Agency	Mar 2013
5	Carry out fish habitat improvement works to address excessive tunnelling.		DARD Rivers Agency, Loughs Agency	Mar 2013
6	Promote riparian zone management to alleviate excessive tunnelling on Leaghany River.		DOE NIEA, Loughs Agency, DARD Rivers Agency	Mar 2013
7	Carry out monitoring and assessment to ascertain the effectiveness of rubble mats in balancing acid pulses in water body.		Loughs Agency	Mar 2013
8	Carry out monitoring and assessment to investigate pH in the Leaghany River.		DOE NIEA	Mar 2013

[A number of catchment wide actions also apply to this water body. These can be found on Page 8.](#)

UKGBNI1NW010102059		Derg River 4 (Upper)	2009 Status: Moderate	
	Action to be taken		Action to be taken by	Target Date
1	Carry out monitoring and assessment to investigate pH in the Derg River.		DOE NIEA	Mar 2013
2	Carry out fish monitoring and assessment to assess migration of Lough Derg trout downstream into the River Derg.		Pettigo DAA, Loughs Agency	Mar 2013
3	Assess forestry operations, felling and redesign plans for Slievadoo forest to ensure appropriate measures are in place to mitigate risk to adjacent watercourses.		DOE NIEA, DARD Forest Service, Loughs Agency	Mar 2013
4	Liaise with ROI organisations to investigate and reduce pressure from potential cross border sources.		DOE NIEA, Loughs Agency, DCC	Mar 2013

[A number of catchment wide actions also apply to this water body. These can be found on Page 8.](#)

UKGBNI1NW010103065		Owenboy Burn	2009 Status: Moderate	
	Action to be taken		Action to be taken by	Target Date
1	Liaise with ROI organisations to investigate and reduce pressure from potential cross border sources.		DOE NIEA, DCC, Loughs Agency	Mar 2013

[A number of catchment wide actions also apply to this water body. These can be found on Page 8.](#)

UKGBNI1NW010102056		River Derg 3	2009 Status: Moderate	
	Action to be taken		Action to be taken by	Target Date
1	Promote riparian zone management such as native planting to buffer impacts.		DOE NIEA, Loughs Agency	Mar 2013
2	Carry out monitoring and assessment to investigate pH in the Derg River.		DOE NIEA	Mar 2013

[A number of catchment wide actions also apply to this water body. These can be found on Page 8.](#)



UKGBNI1NW010102067		Glendergan River	2009 Status: Moderate	
	Action to be taken		Action to be taken by	Target Date
1	Carry out monitoring and assessment to investigate pH in the Glendergan River.		DOE NIEA	Mar 2013
2	Investigate identified water quality impacts i.e. elevated zinc levels in the Glendergan River.		DOE NIEA	Mar 2013
3	Assess forestry operations, felling and redesign plans for Glenderg and Slievedoo forest to ensure appropriate measures are in place to mitigate risk to adjacent watercourses.		DOE NIEA, DARD Forest Service, Loughs Agency	Mar 2013
4	Investigate fly tipping within the water body at Sraghcumber Bridge.		DOE NIEA	Mar 2013
5	Carry out fish habitat improvement works as dictated by business plan/corporate plan to introduce large woody debris.		Loughs Agency	Mar 2013
6	Carry out full RHAT assessment on Glendergan River to enable classification and recommendations at the water body scale.		DOE NIEA	Completed
7	Investigate feasibility and practicality of implementing morphological mitigation measures as recommended.		DOE NIEA	Mar 2013

[A number of catchment wide actions also apply to this water body. These can be found on Page 8.](#)

UKGBNI1NW010102094		River Derg	2009 Status: Good	
	Action to be taken		Action to be taken by	Target Date
1	Maintain current regulatory controls as water body status is Good or better.		DOE NIEA	Mar 2013

[A number of catchment wide actions also apply to this water body. These can be found on Page 8.](#)

UKGBNI1NW010102047		Shanaghy Burn (aka Tievemore Burn)	2009 Status: Moderate	
	Action to be taken		Action to be taken by	Target Date
1	Conduct biological investigations to assess aquatic invertebrates in Shanaghy tributaries.		DOE NIEA	Completed
2	Carry out a river walk upstream of Shanaghy Bridge to identify inputs causing excessive aquatic plant growth.		DOE NIEA	Mar 2013
3	Assess sources of organic pollution downstream of Glashagh Bridge.		DOE NIEA	Mar 2013
4	Investigate identified water quality impacts i.e. copper and zinc levels in this water body.		DOE NIEA	Mar 2013
5	Carry out compliance assessment, investigate any unconsented industrial discharges and where required ensure Water Order consent is obtained.		DOE NIEA	Mar 2013
<a href="#">A number of catchment wide actions also apply to this water body. These can be found on Page 8.</a>				

UKGBNI1NW010102050		Killen Burn	2009 Status: Moderate	
	Action to be taken		Action to be taken by	Target Date
1	Conduct biological investigations to assess aquatic invertebrates in priority areas of the Killen Burn water body identified by desktop data analysis.		DOE NIEA	Completed
2	Carry out a river walk on Killen Burn feeder at Killen, Killen Burn tributary at Garvetagh and on the Back Burn at the Grove to identify inputs causing less than good aquatic plants and phytobenthos.		DOE NIEA	Mar 2013
3	Carry out compliance assessment, investigate any unconsented industrial discharges and where required ensure Water Order consent is obtained.		DOE NIEA	Mar 2013
4	Carry out pollution prevention and enforcement measures, if necessary, to ensure minimal impact of wind farms in the water body.		DOE NIEA	Mar 2013
<a href="#">A number of catchment wide actions also apply to this water body. These can be found on Page 8.</a>				

UKGBNI1NW010102066		Mourne Beg River Upper	2009 Status: Poor	
	Action to be taken		Action to be taken by	Target Date
1	Carry out monitoring and assessment to investigate pH in the upper Mourne Beg River.		DOE NIEA	Mar 2013
2	Investigate identified water quality impacts i.e. copper and zinc levels in this water body.		DOE NIEA	Mar 2013
3	Liaise with ROI organisations to investigate and reduce pressure from potential cross border sources.		DOE NIEA, DCC, Loughs Agency	Mar 2013
4	Carry out fish habitat improvement works as dictated by business plan/corporate plan to augment river gravels previously installed.		Loughs Agency	Mar 2013
5	Carry out fish habitat improvement works to address excessive tunnelling.		DARD Rivers Agency, Loughs Agency	Mar 2013
6	Carry out compliance assessment, investigate any unconsented industrial discharges and where required ensure Water Order consent is obtained.		DOE NIEA	Mar 2013
7	Assess forestry operations, felling and redesign plans for Glenderg forest to ensure appropriate measures are in place to mitigate risk to adjacent watercourses.		DOE NIEA, DARD Forest Service, Loughs Agency	Mar 2013
8	Obtain data on reservoir / lake levels, catchment flows and transfers of water from other water body sources to inform the review of the current abstraction / impoundment licence at the Mourne Beg River Upper. Agree monitoring plans and include details on augmented flows returned to the waterway.		DOE NIEA	Mar 2019
9	Review the current abstraction licence to finalise maximum abstraction volumes, take account of seasonal variations and ensure the ecological need for compensation flows are fully considered at the Mourne Beg River Upper.		DOE NIEA	Mar 2019

[A number of catchment wide actions also apply to this water body. These can be found on Page 8.](#)

UKGBNI1NW010102064		Mourne Beg River Lower	2009 Status: Good	
	Action to be taken		Action to be taken by	Target Date
1	Promote riparian zone management to alleviate excessive tunnelling on Dreenan Burn.		DOE NIEA, Loughs Agency, DARD Rivers Agency	Mar 2013
2	Maintain current regulatory controls as water body status is Good or better.		DOE NIEA	Mar 2013

[A number of catchment wide actions also apply to this water body. These can be found on Page 8.](#)

UKGBNI1NW010102095		Derg River 1 (Lower)	2009 Status: Moderate	
	Action to be taken		Action to be taken by	Target Date
1	Conduct biological investigations to assess aquatic invertebrates in priority areas of the Derg River water body identified by desktop data analysis.		DOE NIEA	Completed
2	Carry out a river walk upstream of Greenville Bridge on the Greenville Stream, Derg feeder up and downstream of Spamount to identify localised causes of less than good phytobenthos.		DOE NIEA	Mar 2013
3	Assess sources of oil contamination identified during investigative monitoring.		DOE NIEA	Mar 2013
4	Carry out pollution prevention and enforcement measures, investigate any unconsented industrial discharges and where required ensure Water Order consent is obtained.		DOE NIEA	Mar 2013
5	Carry out pollution prevention and enforcement measures to reduce ammonia problems identified in this water body.		DOE NIEA	Mar 2013
6	Undertake river restoration project and raise local awareness in Ardstraw.		Ardstraw DCDA, DOE NIEA	Mar 2013
7	Carry out improvement works to the WWTW at Spamount.		NIWL	Dec 2012
8	Conduct invasive alien species recording during river walks and raise awareness on how to prevent the spread of invasive alien species.		DOE NIEA	Dec 2013
9	Carry out full RHAT assessment on Derg River to enable classification and recommendations at the water body scale.		DOE NIEA	Completed
10	Investigate feasibility and practicality of implementing morphological mitigation measures as recommended.		DOE NIEA	Dec 2013
11	Obtain data on reservoir / lake levels, catchment flows and transfers of water from other water body sources to inform the review of the current abstraction / impoundment licence at the lower River Derg. Agree monitoring plans and include details on augmented flows returned to the waterway.		DOE NIEA	Mar 2019
12	Review the current abstraction licence to finalise maximum abstraction volumes, take account of seasonal variations and ensure the ecological need for compensation flows are fully considered at the lower River Derg.		DOE NIEA	Mar 2019

[A number of catchment wide actions also apply to this water body. These can be found on Page 8.](#)

UKGBNI1NW010102016		Lough Catherine	2009 Status: Moderate	
	Action to be taken		Action to be taken by	Target Date
1	Carry out pollution prevention and enforcement measures, if necessary, to prevent future industrial consents failures.		DOE NIEA	Mar 2013
2	Encourage riparian zone management with an aim to improve biodiversity and minimise sedimentation through practical management measures on farms.		Baronscourt Estate	Mar 2013
3	Promote public participation through events held at Baronscourt Estate.		Baronscourt Estate, DOE NIEA	Mar 2013
4	Upgrading of WWTW at Letterbin.		NIWL	Completed

[A number of catchment wide actions also apply to this water body. These can be found on Page 8.](#)

UKGBNI1NW010102005		River Derg tributary	2009 Status: Moderate	
	Action to be taken		Action to be taken by	Target Date
1	Carry out pollution prevention and enforcement measures, if necessary, to prevent future industrial consents failures.		DOE NIEA	Mar 2013

[A number of catchment wide actions also apply to this water body. These can be found on Page 8.](#)

UKGBNI1NW010102074		Mourne River	2009 Status: PEP	
	Action to be taken	Action to be taken by	Target Date	
1	Carry out pollution prevention and enforcement measures, if necessary, to prevent future industrial consents failures.	DOE NIEA	Mar 2013	
2	Carry out compliance assessment, investigate any unconsented industrial discharges and where required ensure Water Order consent is obtained.	DOE NIEA	Mar 2013	
3	Upgrading of WWTW at Camus.	NIWL	Dec 2012	
4	Assess sources of organic pollution causing nutrient enrichment in the catchment.	DOE NIEA	Mar 2013	
5	Carry out full RHAT assessment on Mourne River to enable classification and recommendations at the water body scale.	DOE NIEA	Completed	
6	Investigate feasibility and practicality of implementing morphological mitigation measures as recommended.	DOE NIEA	Mar 2013	
7	Promote riparian zone management to address sporadic areas of bank erosion at Camus, Victoria Bridge and Sion Mills.	DOE NIEA, Loughs Agency, Rivers Agency	Mar 2013	
8	Conduct invasive alien species recording during river walks and raise awareness on how to prevent the spread of invasive alien species i.e. Giant Hogweed, Japanese Knotweed and Himalayan Balsam.	DOE NIEA	Mar 2013	

[A number of catchment wide actions also apply to this water body. These can be found on Page 8.](#)

UKGBNI1NW010102075		Douglas Burn	2009 Status: Good	
	Action to be taken	Action to be taken by	Target Date	
1	Assess forestry operations, felling and redesign plans for Ligfordrum forest to ensure appropriate measures are in place to mitigate risk to adjacent watercourses.	DOE NIEA, DARD Forest Service, Loughs Agency	Mar 2013	
2	Maintain current regulatory controls as water body status is Good or better.	DOE NIEA	Mar 2013	
3	Upgrading of WWTW at Douglas Bridge.	NIWL	Mar 2013	

[A number of catchment wide actions also apply to this water body. These can be found on Page 8.](#)

UKGBNI1NW010102077		Cavanalee River	2009 Status: Moderate	
	Action to be taken		Action to be taken by	Target Date
1	Conduct biological investigations to assess aquatic invertebrates in priority areas of the Cavanalee River water body identified by desktop data analysis.		DOE NIEA	Completed
2	Carry out a river walk on Cavanalee River upstream of Cavanalee Bridge, Milltown Bridge and the Cavanalee River tributary at Edymore to identify localised causes of suppressed invertebrates and high BOD.		DOE NIEA	Mar 2013
3	Conduct invasive alien species recording during river walks and raise awareness on how to prevent the spread of invasive alien species i.e. Giant Hogweed, Japanese Knotweed and Himalayan Balsam.		DOE NIEA	Mar 2013
4	Carry out pollution prevention and enforcement measures, if necessary, to resolve localised pollution problems identified from river walks.		DOE NIEA	Mar 2013

[A number of catchment wide actions also apply to this water body. These can be found on Page 8.](#)

UKGBNI1NW010103063		Finn River	2009 Status: Poor	
	Action to be taken		Action to be taken by	Target Date
1	Carry out pollution prevention and enforcement measures, investigate any unconsented industrial discharges and where required ensure Water Order consent is obtained.		DOE NIEA	Mar 2013
2	Liaise with ROI organisations to investigate and reduce pressure from potential cross border sources.		DOE NIEA, DCC, Loughs Agency	Mar 2013
3	Carry out full RHAT assessment on Finn River to enable classification and recommendations at the water body scale.		DOE NIEA	Completed
4	Investigate feasibility and practicality of implementing morphological mitigation measures as recommended.		DOE NIEA	Mar 2013
5	Conduct invasive alien species recording during river walks and raise awareness on how to prevent the spread of invasive alien species.		DOE NIEA	Mar 2013

[A number of catchment wide actions also apply to this water body. These can be found on Page 8.](#)

## **What other measures are being implemented to maintain and improve the water environment in the Derg & Mourne LMA?**

The Programme of Measures described in the North Western River Basin Management Plan (RBMP) have been categorised into two types of measures: existing and planned and supplementary. Existing and planned measures aim to ensure that existing water uses are appropriately managed and that the water environment remains at good status.

Existing and planned measures include those which have been put in place to meet legal requirements. Those which apply in this LMA include:

- The Drinking Water Directive (80/778/EEC) as amended by Directive (98/83/EC);
- The Sewage Sludge Directive (86/278/EEC);
- The Urban Waste-water Treatment Directive (91/271/EEC);
- The Environmental Impact Assessment Directive (85/337/EEC);
- The Plant Protection Products Directive (91/414/EEC);
- The Nitrates Directive (91/676/EEC);
- The Habitats Directive (92/43/EEC); and
- The Integrated Pollution Prevention Control Directive (96/61/EC).

A number of other existing and planned measures apply in this LMA:

- Cost recovery for water use and promotion of efficient and sustainable water use;
- Protection of drinking water sources;
- Abstraction and Impoundment Control;
- Point source and diffuse source discharge control;
- Controls on physical modifications to surface waters;
- Prevention or reduction of the impact of accidental pollution incidents;
- Authorisation of discharges to groundwater;
- Priority substances control; and
- Controls on other activities impacting on water status.

Further information on existing and planned measures for each sector is available on the programme of measures section of the website.

Supplementary Measures are a number of Northern Ireland wide measures which were agreed by all relevant Departments and Agencies in Northern Ireland including DCAL, DARD, DOE, DRD, NIEA, Loughs Agency and NI Water. Supplementary measures have been identified for the following sectors:

- Abstraction and flow regulation;
- Diffuse and point source (Agriculture, Collection & treatment of sewage, Urban Development, Forestry, Industry and other business, Waste);
- Freshwater Morphology and Marine Morphology;



- Invasive Alien Species and
- Other.

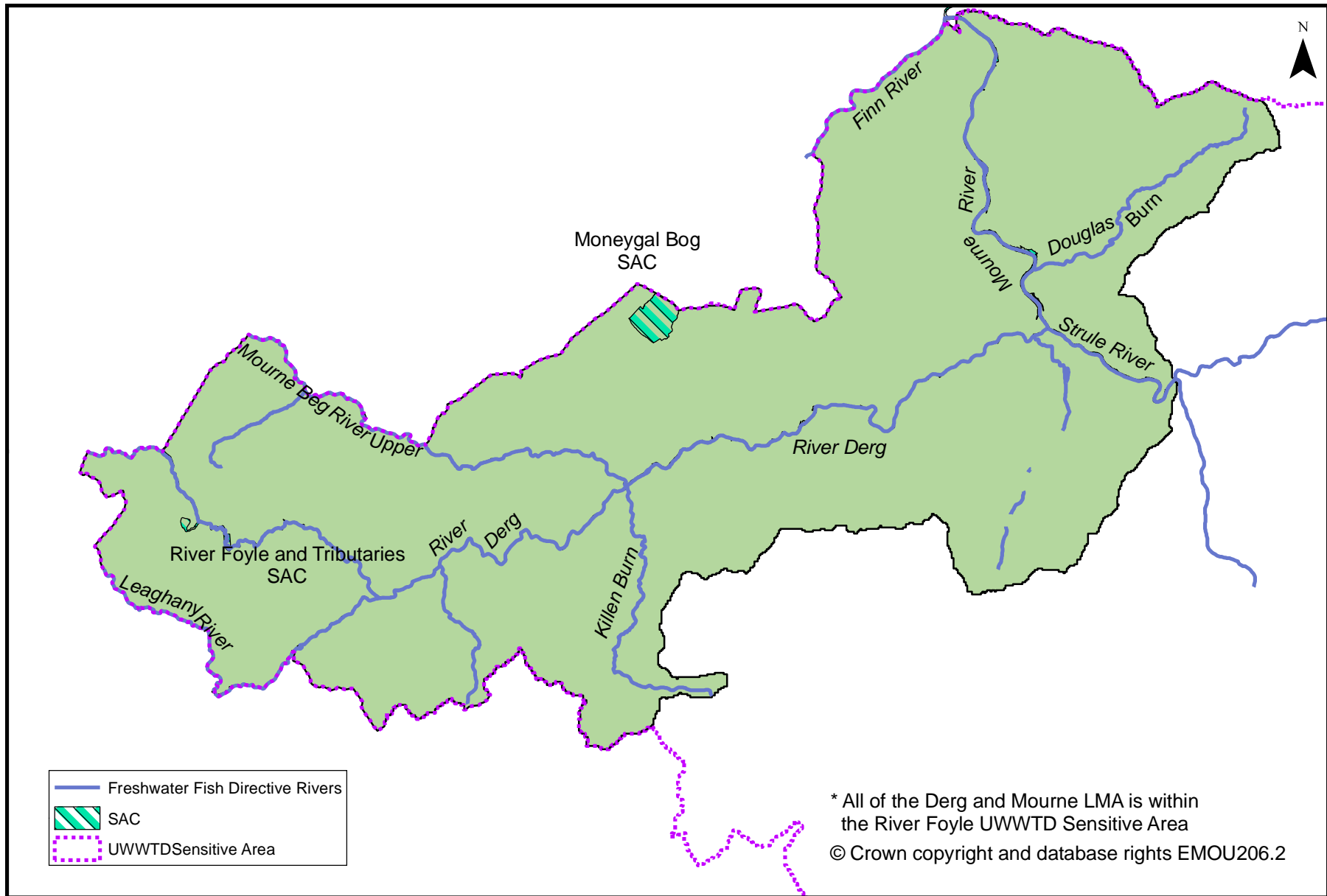
Progress on the implementation of these supplementary measures listed in the RBMPs will be reported to the European Commission in December 2012 and progress is being collated and documented by NIEA. This LMA action plan is an element in the series of supplementary measures for the North West RBD.

**What measures are agreed for water dependent Natura 2000 sites in unfavourable condition?**

Special Areas of Conservation (Habitats Directive) and Special Protection Areas (Birds Directive) are assessed as being in favourable or unfavourable condition. These areas have been examined to determine if water dependent features are present.

The condition of all the features of the River Foyle and Tributaries Special Area of Conservation has not been assessed. There are no water dependent Special Protection Areas in this LMA. There are no specific measures for the Moneygal Bog, Moneygal Bog Part II, Scraghy, Essan Burn and Mullyfamore ASSIs as there are no water related adverse activities causing unfavourable condition assessments of the water dependent features. Further details on Special Areas of Conservation in Derg and Mourne LMA are available in the protected areas section of the website.

### Map 3: Protected Areas in Derg and Mourne LMA



## Protected Areas in Derg and Mourne LMA

The LMA supports important habitats and wildlife. These areas have been designated under European Directives and require special protection. The protected areas are summarised in Table 2 and illustrated in Map 3.

**Table 2: Protected Areas in Derg and Mourne**

Protected Area Type	Location
<p><b>Waters used for the abstraction of drinking water (drinking water protected areas)</b></p>	<p>There are groundwater and 2 drinking water protected areas.</p>
<p><b>Areas designed to protect economically significant aquatic species</b></p> <p>Freshwater Fish Directive (78/659/EEC)</p> <p>Shellfish Waters Directive (79/923/EC)</p>	<p>There are 145 km of rivers identified under the Freshwater Fish Directive all designated Salmonid</p> <p>There are no designated shellfish waters.</p>
<p><b>Bathing Waters</b></p> <p>These are bathing waters identified under the Bathing Waters Directives (76/160/EEC)</p>	<p>There are no identified bathing waters.</p>
<p><b>Nutrient Sensitive Areas</b></p> <p>Areas designated as sensitive under the Urban Waste Water Treatment Directive (91/271/EEC) and the</p> <p>Nitrates Directive (91/676/EEC)</p>	<p>There is 1 Urban Waste Water Treatment Directive sensitive area; River Foyle.</p> <p>A total territory approach has been adopted in Northern Ireland for the Nitrates Directive.</p>
<p><b>Areas designated for the protection of habitats or species (Natura 2000 sites)</b></p> <p>These are areas designated for the protection of habitats or species where the maintenance or improvement of the status of water is an important factor in their protection.</p> <p>Habitats Directive (92/43/EEC)</p> <p>Birds Directive (79/409/EEC)</p>	<p>There are 2 water dependent Special Area of Conservation; River Foyle &amp; its tributaries and the Moneygal Bog.</p> <p>There are no water dependent Special Protection Areas.</p>

## Abbreviations

Term	Explanation
AFBI	Agri-Food and Biosciences Institute
ADCDA	Ardstraw and District Community Development Association
BOD	Biochemical oxygen demand
CAC	Castlederg Angling Club
DARD	Department of Agriculture and Rural Development
DCC	Donegal County Council
DOE	Department of the Environment
DRD	Department of Regional Development
DWI	Drinking Water Inspectorate
EP	Ecological Potential – the status of a heavily modified water body measured against the maximum ecological quality it could achieve given the constraints imposed upon it by those heavily modified characteristics necessary for its use. There are four classes for the status of heavily modified water bodies: good ecological potential or better (GEP), moderate ecological potential (MEP), poor ecological potential (PEP) and bad ecological potential (BEP).
FASTA	Foyle Association of Salmon and Trout Anglers
GSNI	Geological Survey of Northern Ireland
LMA	Local Management Area
NIEA	Northern Ireland Environment Agency
NIWL	Northern Ireland Water Limited
UAF	Ulster Angling Federation
UFU	Ulster Farmers Union
PDAA	Pettigo and District Angling Association
RBMP	River Basin Management Plan
RHAT	River Hydromorphology Assessment Technique
ROI	Republic of Ireland
WWTW	Waste Water Treatment Works

### Working together to implement the Local Management Action Plan.

If you would like to get involved, find out more about the plans, or are carrying out work that will assist in protecting the water environment let us know at the Upper Foyle Catchment Stakeholder Group meetings or by contacting the North Western RBMP Implementation Manager, Alvin Wilson.

Email: [alvin.wilson@doeni.gov.uk](mailto:alvin.wilson@doeni.gov.uk)

Telephone: 028 8262 3230.

Further details are available at [www.doeni.gov.uk/niea/nw-workingtogether](http://www.doeni.gov.uk/niea/nw-workingtogether)

### Water Pollution Hotline:

**\*Freephone 0800 80 70 60**

This line is manned 24 hours a day, 7 days a week.

\*Mobile calls are charged at standard network rates.

If you become aware of a water pollution incident please call the Water Pollution Hotline in confidence giving the location and nature of the pollution.





Our aim is to protect, conserve and promote the natural environment and built heritage for the benefit of present and future generations.

Northern Ireland Environment Agency  
Water Management Unit  
17 Antrim Road  
Lisburn  
BT28 3AL  
T. (028) 9262 3004  
[www.doeni.gov.uk/niea](http://www.doeni.gov.uk/niea)