

Significant Water Management Issues

# Braid and Main Local Management Area Action Plan and Update

December 2013

<b>UKGBNI1NB030302148</b>	<b>River Main tributary</b>	<b>2009 Status: Moderate</b>
---------------------------	-----------------------------	------------------------------

	<b>Action</b>	<b>Action to be taken by</b>	<b>Target Date</b>
1	Carry out a river walk from Station Road to fork in river at railway line to assess investigate polluting impact on aquatic invertebrates	DOE NIEA	Complete
2	Carry out monitoring and assessment between Garryduff Road and the railway line to assess causes of dissolved oxygen suppression in this water body	DOE NIEA	Complete
3	Carry out compliance assessment of industrial consented discharge	DOE NIEA	On-going
4	Carry out a visual inspection of WWTW at Dunloy	DOE NIEA	On-going
5	Conduct biological investigations to assess aquatic invertebrates upstream of Carey Isle	DOE NIEA	Complete

<b>UKGBNI1NB030302212</b>	<b>Killagan water</b>	<b>2009 Status: Poor</b>
---------------------------	-----------------------	--------------------------

	<b>Action</b>	<b>Action to be taken by</b>	<b>Target Date</b>
1	Carry out monitoring and assessment between Corkey Quarry and Kilmandil Road to assess causes of dissolved oxygen suppression in this water body	DOE NIEA	Mar 2014
2	Carry out compliance assessment of consented industrial discharges including site drainage and private sewage	DOE NIEA	Mar 2014
3	Carry out a river walk to investigate polluting impacts on aquatic invertebrates	DOE NIEA	Mar 2014
4	Assess sources of organic pollution including the impact of septic tanks around Dunloy	DOE NIEA	Mar 2014
5	Conduct biological investigations to assess aquatic invertebrates at Killagan Bridge, A44 Road Bridge, Kilmanoil Bridge and Islegorm	DOE NIEA	Complete
6	Carry out pollution prevention and enforcement measures in relation to Corkey Quarry	DOE NIEA	Dec 2015

<b>UKGBNI1NB030302156</b>	<b>River Main</b>	<b>2009 Status: Moderate</b>
---------------------------	-------------------	------------------------------

	<b>Action</b>	<b>Action to be taken by</b>	<b>Target Date</b>
--	---------------	------------------------------	--------------------

1	Carry out a river walk and Dissolved Oxygen survey from Bridge Road to Damstown Road Bridge ( on Bellaghy Rd)	DOE NIEA	Mar 2014
2	Carry out compliance assessment of industrial consented discharges including private sewage, vehicle wash and quarry premises	DOE NIEA	Mar 2014
3	Conduct biological investigations to assess aquatic invertebrates in Damstown Burn at Pike Hill, Damstown bridge and Damstown Feeder at the bridge	DOE NIEA	Complete

<b>UKGBNI1NB030302234</b>	<b>Cloghmills Water</b>	<b>2009 Status: Good</b>	
---------------------------	-------------------------	--------------------------	--

	<b>Action</b>	<b>Action to be taken by</b>	<b>Target Date</b>
1	Carry out monitoring and assessment to assess causes of dissolved oxygen suppression in this water body	DOE NIEA	Mar 2014
2	Carry out compliance assessment of consented industrial discharge	DOE NIEA	Mar 2014

<b>UKGBNI1NB030302013</b>	<b>River Main</b>	<b>2009 Status: Moderate</b>	
---------------------------	-------------------	------------------------------	--

	<b>Action</b>	<b>Action to be taken by</b>	<b>Target Date</b>
1	Carry out compliance assessment of industrial consented discharge	DOE NIEA	Mar 2014
2	Upgrading of WWTW at Glarryford by installing a package Rotating Biological Contactor	NIWL	Complete
3	Upgrading of WWTW at Duneany by installing a package Rotating Biological Contactor	NIWL	Complete
4	Carry out a visual inspection of WWTW at Glarryford	DOE NIEA	Complete
5	Carry out a visual inspection of WWTW at Duneany	DOE NIEA	Complete
6	Investigate identified water quality impacts by carrying out a Dissolved Oxygen survey in the area above Glarryford	DOE NIEA	Dec 2013

<b>UKGBNI1NB030302024</b>	<b>River Main tributary</b>	<b>2009 Status: Moderate</b>	
---------------------------	-----------------------------	------------------------------	--

	<b>Action</b>	<b>Action to be taken by</b>	<b>Target</b>
--	---------------	------------------------------	---------------

		<b>taken by</b>	<b>Date</b>
1	Carry out a visual inspection of WWTW at Carnbeg	DOE NIEA	Complete
2	Carry out compliance assessment of industrial consented discharges including private sewage discharges	DOE NIEA	Mar 2014
3	Investigate identified water quality impacts by carrying out a Dissolved Oxygen survey above Dundermot Bridge	DOE NIEA	Dec 2015

<b>UKGBNI1NB030302237</b>	<b>Skerry Water</b>	<b>2009 Status: Moderate</b>
---------------------------	---------------------	------------------------------

	<b>Action</b>	<b>Action to be taken by</b>	<b>Target Date</b>
1	Carry out a visual inspection of WWTW at Newtown Crommelin	DOE NIEA	Complete
2	Carry out pollution prevention and enforcement measures following a serious fish kill in this water body	DOE NIEA	Dec 2012

<b>UKGBNI1NB030302233</b>	<b>Glenravel Water</b>	<b>2009 Status: MEP</b>
---------------------------	------------------------	-------------------------

	<b>Action</b>	<b>Action to be taken by</b>	<b>Target Date</b>
1	Carry out compliance assessment of Cargan WWTW	DOE NIEA	Mar 2014
2	Carry out compliance assessment of consented industrial discharges	DOE NIEA	Mar 2014
3	Investigate feasibility and practicality of implementing morphological mitigation measures as recommended in respect of Dungonnell Dam	DOE NIEA, NIWL	Dec 2015
4	Carry out compliance assessment visits on hydro power installations to ensure compliance with the Abstraction and Impoundment Regulations	DOE NIEA	Dec 2015
5	Provide advice on protected area designations in respect of the Garron Plateau	DOE NIEA	Dec 2015
6	Support local environmental initiatives such as SCAMP in relation to the Garron Plateau	DOE NIEA, RSPB	Dec 2015
7	Identification of contamination risks from 'source to tap' through the development of drinking water safety plans	NIWL	Dec 2015

---

<b>UKGBNI1NB030302011</b>	<b>Clogh River</b>	<b>2009 Status: Moderate</b>
---------------------------	--------------------	------------------------------

	<b>Action</b>	<b>Action to be taken by</b>	<b>Target Date</b>
1	Carry out a visual inspection of WWTW in respect of Clogh, Killygore	DOE NIEA	Mar 2014
2	Upgrading of WWTW at Martinstown under PC10 programme	NIWL	Dec 2013
3	Carry out compliance assessment of consented industrial discharges	DOE NIEA	Mar 2014
4	Investigate identified water quality impacts by undertaking a Dissolved Oxygen survey upstream of Glarryford bridge	DOE NIEA	Complete

---

<b>UKGBNI1NB030302019</b>	<b>Clogh River</b>	<b>2009 Status: Moderate</b>
---------------------------	--------------------	------------------------------

	<b>Action</b>	<b>Action to be taken by</b>	<b>Target Date</b>
1	Carry out compliance assessment of consented industrial discharges	DOE NIEA	Mar 2014
2	Investigate identified water quality impacts by carrying out a Dissolved Oxygen survey upstream of Glarryford bridge	DOE NIEA	Complete

---

<b>UKGBNI1NB030302165</b>	<b>River Main tributary</b>	<b>2009 Status: Moderate</b>
---------------------------	-----------------------------	------------------------------

	<b>Action</b>	<b>Action to be taken by</b>	<b>Target Date</b>
1	Assess forestry operations in relation to Craig's forest	DOE NIEA	Dec 2015

---

<b>UKGBNI1NB030302157</b>	<b>Aghill Burn</b>	<b>2009 Status: Moderate</b>
---------------------------	--------------------	------------------------------

	<b>Action</b>	<b>Action to be taken by</b>	<b>Target Date</b>
1	Carry out compliance assessment of consented industrial discharges	DOE NIEA	Mar 2014

---

2	Carry out a river walk upstream of the routine monitoring station to identify possible sources of pollution	DOE NIEA	Complete
---	---	----------	----------

<b>UKGBNI1NB030302158</b>	<b>River Main</b>	<b>2009 Status: Moderate</b>	
---------------------------	-------------------	------------------------------	--

	<b>Action</b>	<b>Action to be taken by</b>	<b>Target Date</b>
1	Carry out a visual inspection of WWTW at Tullygrawley and Railway View	DOE NIEA	Complete
2	Carry out compliance assessment for consented industrial discharges	DOE NIEA	Mar 2014

<b>UKGBNI1NB030302231</b>	<b>Cleggan River</b>	<b>2009 Status: Good</b>	
---------------------------	----------------------	--------------------------	--

	<b>Action</b>	<b>Action to be taken by</b>	<b>Target Date</b>
1	Maintain current regulatory controls as water body status is Good or better	DOE NIEA	Dec 2015

<b>UKGBNI1NB030302232</b>	<b>Ticloy Water</b>	<b>2009 Status: Good</b>	
---------------------------	---------------------	--------------------------	--

	<b>Action</b>	<b>Action to be taken by</b>	<b>Target Date</b>
1	Maintain current regulatory controls as water body status is Good or better	DOE NIEA	Dec 2015

<b>UKGBNI1NB030302016</b>	<b>Breckagh Water</b>	<b>2009 Status: Moderate</b>	
---------------------------	-----------------------	------------------------------	--

	<b>Action</b>	<b>Action to be taken by</b>	<b>Target Date</b>
1	Assess forestry operations , ascertain felling program in the catchment and engage with forestry field staff to ensure measures are in place to mitigate risks from felling	DOE NIEA	Dec 2015
2	Assess sources of organic pollution upstream of the routine monitoring point	DOE NIEA	Mar 2014
3	Carry out fish monitoring and assessment on Priest's Burn at Breckagh Bridge	DOE NIEA, AFBI	Dec 2015

4	Investigate feasibility and practicality of implementing morphological mitigation measures as recommended including fencing of banks and adequate buffer strips	DOE NIEA, DARD Countryside Management Branch, DARD Forest Service	Mar 2014
---	---	---	----------

<b>UKGBNI1NB030302022</b>	<b>Artoges River</b>	<b>2009 Status: Good</b>	
---------------------------	----------------------	--------------------------	--

	<b>Action</b>	<b>Action to be taken by</b>	<b>Target Date</b>
1	Maintain current regulatory controls as water body status is Good or better	DOE NIEA	Dec 2015
2	Identification of contamination risks from 'source to tap' through the development of drinking water safety plans	NIWL	Dec 2015

<b>UKGBNI1NB030302015</b>	<b>Braid River</b>	<b>2009 Status: Good</b>	
---------------------------	--------------------	--------------------------	--

	<b>Action</b>	<b>Action to be taken by</b>	<b>Target Date</b>
1	Maintain current regulatory controls as water body status is Good or better	DOE NIEA	Dec 2015

<b>UKGBNI1NB030302023</b>	<b>Braid River</b>	<b>2009 Status: Moderate</b>	
---------------------------	--------------------	------------------------------	--

	<b>Action</b>	<b>Action to be taken by</b>	<b>Target Date</b>
1	Assess sources of organic pollution within this water body	DOE NIEA	Mar 2014

<b>UKGBNI1NB030302010</b>	<b>Braid River</b>	<b>2009 Status: Moderate</b>	
---------------------------	--------------------	------------------------------	--

	<b>Action</b>	<b>Action to be taken by</b>	<b>Target Date</b>
1	Investigate identified water quality impacts in the catchment	DOE NIEA	On-going

<b>UKGBNI1NB030302236</b>	<b>Glen Burn</b>	<b>2009 Status: Good</b>
---------------------------	------------------	--------------------------

	<b>Action</b>	<b>Action to be taken by</b>	<b>Target Date</b>
1	Maintain current regulatory controls as water body status is Good or better	DOE NIEA	Dec 2015

<b>UKGBNI1NB030302020</b>	<b>Braid River</b>	<b>2009 Status: Good</b>
---------------------------	--------------------	--------------------------

	<b>Action</b>	<b>Action to be taken by</b>	<b>Target Date</b>
1	Maintain current regulatory controls as water body status is Good or better	DOE NIEA	Dec 2015

<b>UKGBNI1NB030302021</b>	<b>Devenagh Burn</b>	<b>2009 Status: Good</b>
---------------------------	----------------------	--------------------------

	<b>Action</b>	<b>Action to be taken by</b>	<b>Target Date</b>
1	Conduct biological investigations to assess aquatic invertebrates at Devenagh Bridge and Nuns Bridge	DOE NIEA	Complete
2	Investigate identified water quality impacts by carrying out a Dissolved Oxygen survey from Devenagh bridge to Nun's bridge	DOE NIEA	Mar 2014

<b>UKGBNI1NB030302018</b>	<b>Braid River</b>	<b>2009 Status: PEP</b>
---------------------------	--------------------	-------------------------

	<b>Action</b>	<b>Action to be taken by</b>	<b>Target Date</b>
1	Carry out a river walk from Ballykeel bridge to the confluence with Deerfin Burn	DOE NIEA	Complete
2	Investigate feasibility and practicality of implementing morphological mitigation measures as recommended in the hydromorphology survey report	DOE NIEA	Dec 2015

<b>UKGBNI1NB030302159</b>	<b>River Main tributary</b>	<b>2009 Status: Poor</b>
---------------------------	-----------------------------	--------------------------



	<b>Action</b>	<b>Action to be taken by</b>	<b>Target Date</b>
1	Conduct biological investigations to assess aquatic invertebrates in Aghoghill Burn at Killybegs bridge, Ballyminstra, and Rose Brook, Aghoghill feeder from Gracehill	DOE NIEA	Complete
2	Carry out compliance assessment of consented industrial discharges	DOE NIEA	Mar 2014
3	Carry out pollution prevention and enforcement measures in the area of Killybegs bridge	DOE NIEA	On-going
4	Carry out a river walk from Gloonan Road to River Main	DOE NIEA	Mar 2014

<b>UKGBNI1NB030302235</b>	<b>Douglas Burn</b>	<b>2009 Status: High</b>	
---------------------------	---------------------	--------------------------	--

	<b>Action</b>	<b>Action to be taken by</b>	<b>Target Date</b>
1	Maintain current regulatory controls as water body status is Good or better	DOE NIEA	Dec 2015

<b>UKGBNI1NB030302161</b>	<b>Kells Water</b>	<b>2009 Status: Good</b>	
---------------------------	--------------------	--------------------------	--

	<b>Action</b>	<b>Action to be taken by</b>	<b>Target Date</b>
1	Maintain current regulatory controls as water body status is Good or better	DOE NIEA	Dec 2015

<b>UKGBNI1NB030302017</b>	<b>Deerfin Burn</b>	<b>2009 Status: Poor</b>	
---------------------------	---------------------	--------------------------	--

	<b>Action</b>	<b>Action to be taken by</b>	<b>Target Date</b>
1	Conduct biological investigations to assess aquatic invertebrates at Harryville, Milltown, Ballylesson stream at Mageestown and Ballycreggy stream at Ballylesson	DOE NIEA	Complete
2	Carry out pollution prevention and enforcement measures in response to observed sewage fungus in Ballycreggy stream	DOE NIEA	On-going
3	Carry out monitoring and assessment into Dissolved Oxygen suppression upstream of Lisminary road bridge	DOE NIEA	Complete

<b>UKGBNI1NB030302160</b>	<b>River Main</b>	<b>2009 Status: Moderate</b>
---------------------------	-------------------	------------------------------

	<b>Action</b>	<b>Action to be taken by</b>	<b>Target Date</b>
1	Carry out a visual inspection of WWTW at Straid	DOE NIEA	Complete
2	Carry out a visual inspection of WWTW at Slaght	DOE NIEA	Dec 2013

<b>UKGBNI1NB030302199</b>	<b>Glenwhirry River</b>	<b>2009 Status: MEP</b>
---------------------------	-------------------------	-------------------------

	<b>Action</b>	<b>Action to be taken by</b>	<b>Target Date</b>
1	Assess forestry operations in relation to Ballyboley and Capanagh forests	DOE NIEA	Dec 2015
2	Assess significance of sheep dip usage and review groundwater authorisations where appropriate	DOE NIEA	Dec 2015
3	Investigate feasibility and practicality of implementing morphological mitigation measures as recommended in respect of Killylane reservoir	DOE NIEA, NIWL	Dec 2015
4	Identification of contamination risks from 'source to tap' through the development of drinking water safety plans	NIWL	Dec 2015

<b>UKGBNI1NB030302201</b>	<b>Glenwhirry River</b>	<b>2009 Status: Good</b>
---------------------------	-------------------------	--------------------------

	<b>Action</b>	<b>Action to be taken by</b>	<b>Target Date</b>
1	Maintain current regulatory controls as water body status is Good or better	DOE NIEA	Dec 2015

<b>UKGBNI1NB030302168</b>	<b>Connor Burn</b>	<b>2009 Status: Poor</b>
---------------------------	--------------------	--------------------------

	<b>Action</b>	<b>Action to be taken by</b>	<b>Target Date</b>
1	Carry out fish monitoring and assessment at Connor enclosure	DOE NIEA,	Dec 2015

---

AFBI

---

2	Investigate feasibility and practicality of implementing morphological mitigation measures as recommended including planting to stabilise the banks	DOE NIEA, DARD Rivers Agency	Mar 2014
---	---	------------------------------------	----------

---

3	Investigate sources of sediment above the weir at Connor enclosure	DOE NIEA	Mar 2014
---	--	----------	----------

---

---

<b>UKGBNI1NB030302014</b>	<b>Kells Water</b>	<b>2009 Status: Good</b>
---------------------------	--------------------	--------------------------

---

	<b>Action</b>	<b>Action to be taken by</b>	<b>Target Date</b>
--	---------------	------------------------------	--------------------

---

1	Maintain current regulatory controls as water body status is Good or better	DOE NIEA	Dec 2015
---	---	----------	----------

---

2	Investigate identified water quality impacts in relation to reduced flow at weir during dry weather	DOE NIEA	Dec 2015
---	---	----------	----------

---

---

<b>UKGBNI1NB030302164</b>	<b>Sharvogues Burn</b>	<b>2009 Status: Moderate</b>
---------------------------	------------------------	------------------------------

---

	<b>Action</b>	<b>Action to be taken by</b>	<b>Target Date</b>
--	---------------	------------------------------	--------------------

---

1	Conduct biological investigations to assess aquatic invertebrates at Sharvogues, downstream of filling station and at Kells Road Bridge	DOE NIEA	Complete
---	---	----------	----------

---

2	Carry out compliance assessment of consented industrial discharges	DOE NIEA	Mar 2014
---	--	----------	----------

---

3	Assess significance of sheep dip usage and review groundwater authorisations where appropriate	DOE NIEA	Dec 2015
---	--	----------	----------

---

---

<b>UKGBNI1NB030302150</b>	<b>River Main</b>	<b>2009 Status: Moderate</b>
---------------------------	-------------------	------------------------------

---

	<b>Action</b>	<b>Action to be taken by</b>	<b>Target Date</b>
--	---------------	------------------------------	--------------------

---

1	Carry out compliance assessment of consented industrial discharges	DOE NIEA	Mar 2014
---	--	----------	----------

---

2	Assess forestry operations in Randalstown forest	DOE NIEA	Dec 2015
---	--	----------	----------

---

---

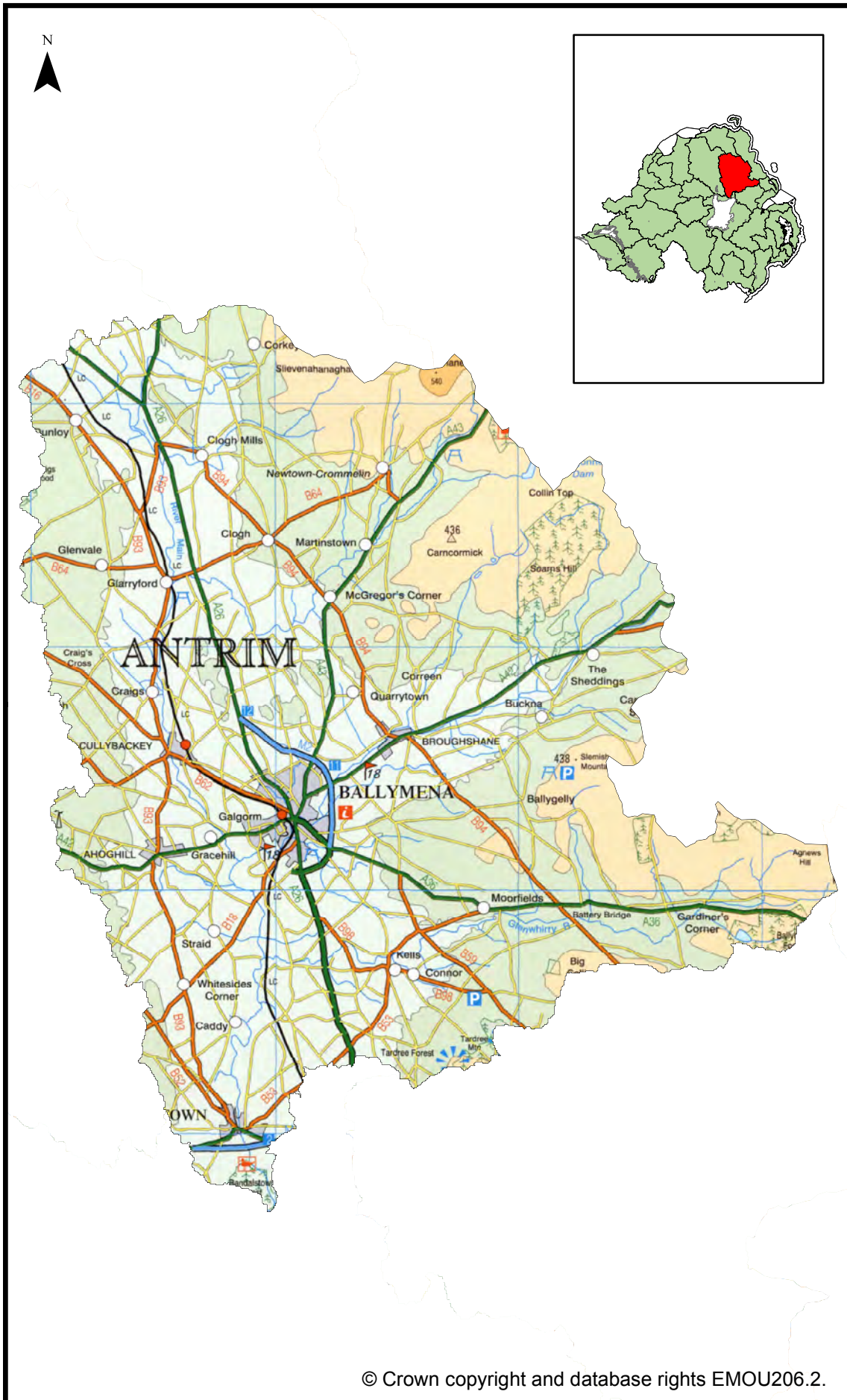
3	Carry out a visual inspection of WWTW and septic tanks including Coolsythe Road and Connaught Road	DOE NIEA	Complete
4	Carry out a visual inspection of WWTW and septic tanks at Procklis	DOE NIEA	Complete
5	Carry out compliance assessment visits on hydro power installations to ensure compliance with the Abstraction and Impoundment regulations	DOE NIEA	Dec 2015
6	Carry out fish monitoring and assessment at Dunmore Bridge	DCAL	Complete
7	Investigate feasibility and practicality of implementing morphological mitigation measures as recommended including fencing and planting native vegetation	DOE NIEA, DARD Countryside Management Branch	Mar 2014

---

**BRAID AND MAIN**  
Local Management Area



# Map 1: Braid and Main Local Management Area



## **Introduction**

River Basin Management Plans were published in December 2009. The plans describe where the water environment needs to be protected or improved, the timeframe to make these improvements and how that can be achieved. The plans will be implemented through Local Management Areas (LMAs) during the 2009 to 2015 planning cycle. This Braid and Main Local Management Area Action Plan is one of a series of action plans that have been developed for the 26 LMAs across the Neagh Bann, North Western and North Eastern River Basin Districts. The action plan details local measures identified to improve the water environment.

## **Braid and Main Local Management Area**

The Braid and Main LMA (Map 1) is part of the Neagh Bann River Basin District and drains into Lough Neagh at Randalstown Forest. The land area covered by the LMA is approximately 714 km<sup>2</sup>. The main river is the River Main, with a very significant River Braid draining into the Main near Ballymena. Both the Braid and the Main have tributaries feeding them such as Kells Water, Ahoghill Burn, Artoges River and the Clogh River. The rivers and their tributaries also support a wide range of recreational activities including walking, canoeing and angling.

The main towns are Ballymena and Randalstown and there are several smaller towns throughout the area, such as Ahoghill, Cullybackey, Broughshane, Dunloy, Cloughmills and Kells. The main land use is improved grassland with some forestry and a number of important bogs present in the LMA. The north and west of the LMA borders on the Antrim Hills and this region contains the Antrim Coast and Glens Area of Outstanding Natural Beauty.

The LMA supports important habitats and wildlife. These areas have been designated under European Directives and require special protection. The protected areas are summarised in a table at the end of this report.

## **What is the status of surface waters in Braid and Main LMA?**

66% of surface water bodies in Braid and Main LMA have been classified as less than good status (Map 2). There are a number of pressures that may prevent some waters reaching good quality. The main ones are considered to be:

- Abstraction and flow regulation
- Diffuse and point source pollution
- Changes to morphology (physical habitat)
- Invasive alien species

Groundwaters (underground water) interact with the surface waters around them, thus the quality and quantity of an area's groundwater can affect the surface waters.

There is one groundwater body within Braid and Main LMA. Ballymena groundwater body is currently at poor status due to nitrate levels but has a target to achieve good status by 2021.

Three water bodies in the area were identified as being impacted by abstraction and flow regulation. Braid River at Ballymena has been altered for flood defence and is extensively culverted. Glenwhirry River has abstractions at Crosswater for Killylane WWTW. Glenravel River has an abstraction at the Dungonnell Dam which has an intake from the

Inver River. As a result sections of Braid and Glenwhirry Rivers and Glenravel Water have been classified as heavily modified.

A number of the biological and chemical water quality elements used in classification can be affected by both diffuse and point source pollution.

In this LMA the main impacts were seen in invertebrate and macrophyte suppression. The rivers affected were: Main, Deerfin, Braid, Aghill Burn, Sharvogues Burn, Killagan and Skerry Water.

Six water bodies were identified as being affected by changes to morphology (physical habitat). The main rivers affected were: Clogh, Kells, Braid, Connor Burn and Skerry Water.

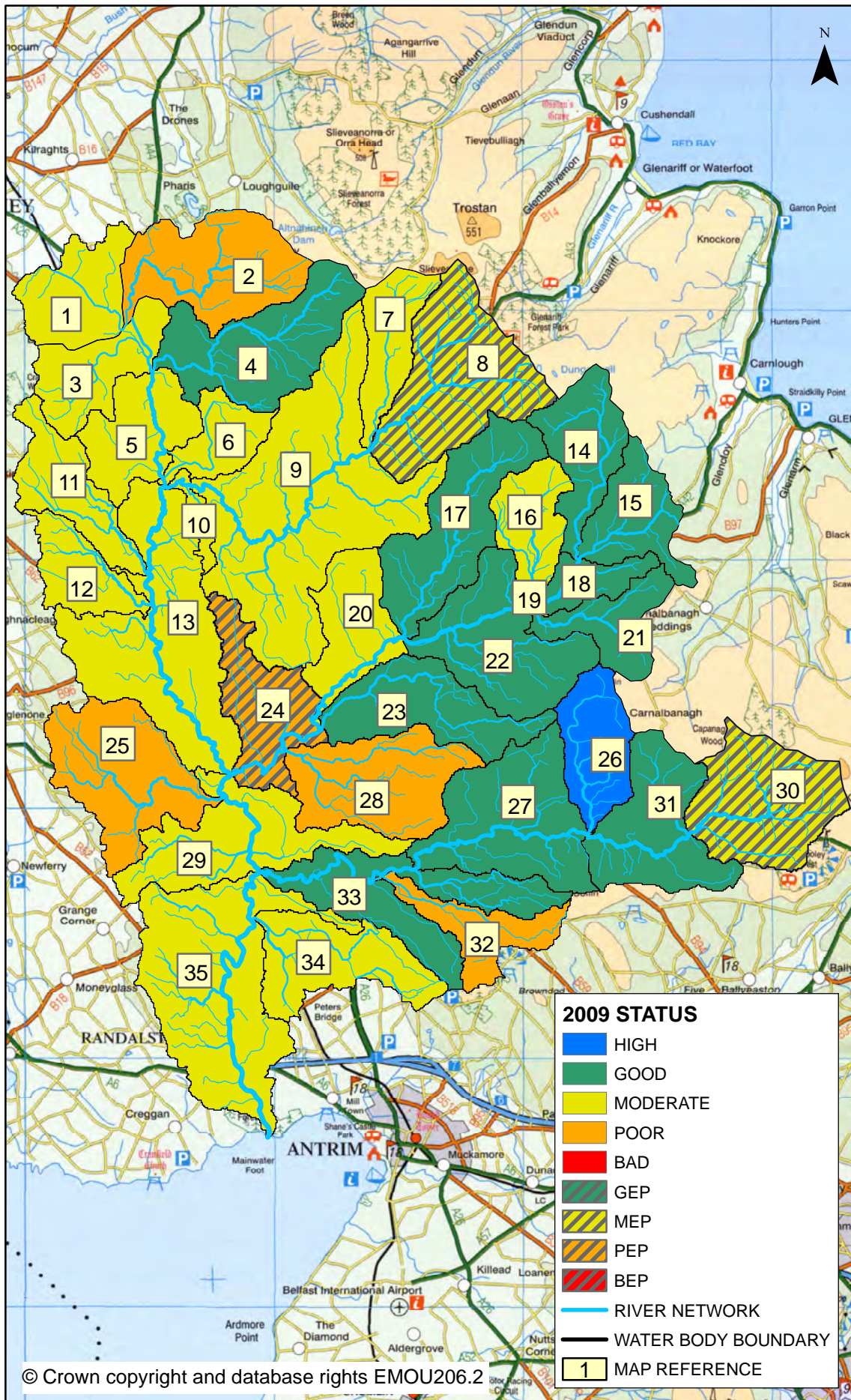
The water environment in Northern Ireland has been impacted by the introduction of invasive alien species. Species which have already become established in this area include:

- Canadian Pondweed (*Elodea canadensis*)
- Giant Hogweed (*Heracleum mantegazzianum*)
- Japanese Knotweed (*Fallopia japonica*)
- Himalayan Balsam (*Impatiens glandulifera*)



This page is intentionally blank

**Map 2: 2009 status of surface water bodies in Braid and Main LMA**



**Table 1: 2009 status and proposed objectives**

Map Reference	Water Body Code	Water Body Name	2009 Status	2015 Objective	Page Number
1	UKGBNI1NB030302148	River Main tributary	Moderate	Moderate	11
2	UKGBNI1NB030302212	Killagan Water	Poor	Moderate	11
3	UKGBNI1NB030302156	River Main	Moderate	Moderate	12
4	UKGBNI1NB030302234	Cloghmills Water	Good	Good	12
5	UKGBNI1NB030302013	River Main	Moderate	Moderate	12
6	UKGBNI1NB030302024	River Main tributary	Moderate	Moderate	13
7	UKGBNI1NB030302237	Skerry Water	Moderate	Good	13
8	UKGBNI1NB030302233	Glenravel Water	MEP	GEP	14
9	UKGBNI1NB030302011	Clogh River	Moderate	Good	14
10	UKGBNI1NB030302019	Clogh River	Moderate	Good	15
11	UKGBNI1NB030302165	River Main tributary	Moderate	Good	15
12	UKGBNI1NB030302157	Aghill Burn	Moderate	Good	15
13	UKGBNI1NB030302158	River Main	Moderate	Good	15
14	UKGBNI1NB030302231	Cleggan River	Good	Good	16
15	UKGBNI1NB030302232	Ticloym Water	Good	Good	16
16	UKGBNI1NB030302016	Breckagh Water	Moderate	Good	16
17	UKGBNI1NB030302022	Artoges River	Good	Good	17
18	UKGBNI1NB030302015	Braid River	Good	Good	17
19	UKGBNI1NB030302023	Braid River	Moderate	Good	17
20	UKGBNI1NB030302010	Braid River	Moderate	Good	17
21	UKGBNI1NB030302236	Glen Burn	Good	Good	18
22	UKGBNI1NB030302020	Braid River	Good	Good	18

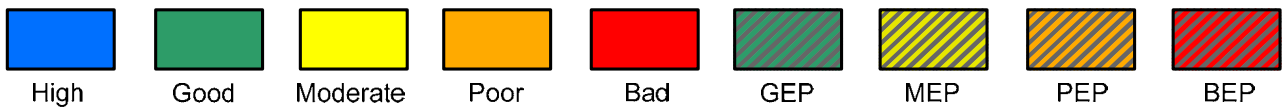
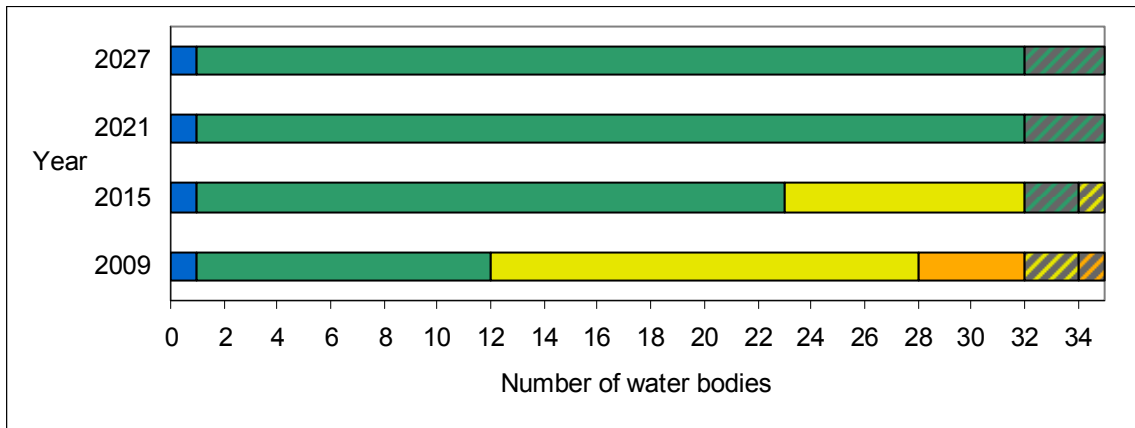
**Table 1: 2009 status and proposed objectives (continued)**

Map Reference	Water Body Code	Water Body Name	2009 Status	2015 Objective	Page Number
23	UKGBNI1NB030302021	Devenagh Burn	Good	Good	18
24	UKGBNI1NB030302018	Braid River	PEP	MEP	18
25	UKGBNI1NB030302159	River Main tributary	Poor	Moderate	19
26	UKGBNI1NB030302235	Douglas Burn	High	High	19
27	UKGBNI1NB030302161	Kells Water	Good	Good	19
28	UKGBNI1NB030302017	Deerfin Burn	Poor	Moderate	20
29	UKGBNI1NB030302160	River Main	Moderate	Good	20
30	UKGBNI1NB030302199	Glenwhirry River	MEP	GEP	20
31	UKGBNI1NB030302201	Glenwhirry River	Good	Good	21
32	UKGBNI1NB030302168	Connor Burn	Poor	Moderate	21
33	UKGBNI1NB030302014	Kells Water	Good	Good	21
34	UKGBNI1NB030302164	Sharvogues Burn	Moderate	Moderate	22
35	UKGBNI1NB030302150	River Main	Moderate	Good	22
36	UKGBNI4NB002	Ballymena (Groundwater Body)	Poor	Poor	23

### What improvements do we plan to achieve?

We have set environmental objectives to deliver improvements as shown below. We aim to achieve good status or better in 71% of our surface waters by 2015 and good status in 100% of our groundwaters by 2021.

**Figure 1: 2009 status and proposed objectives for surface waters in Braid and Main LMA**



### How are we going to maintain and improve the water environment in Braid and Main LMA?

There are a number of actions which will be implemented in Braid and Main LMA in order to maintain and improve the water environment. The list of actions that follows include actions that apply throughout the LMA and also actions that apply to individual water bodies.

**The actions below apply throughout the LMA.**

	Action to be taken	Action to be taken by	Target Date
1	Conduct a water resource assessment to inform an ongoing review of abstraction licences within Northern Ireland.	DOE NIEA	Dec 2013
2	Ensure that licences for new and existing hydro power developments are compliant with the Water Framework Directive and Habitats Regulations to support good ecological status and carry out risk based compliance visits.	DOE NIEA	Mar 2014
3	Review of groundwater abstraction and planning applications where necessary.	DOE NIEA	Dec 2014
4	Review the relevance of nutrient budget in the context of this LMA to establish relative nutrient inputs from agriculture, industry and sewage discharges.	DOE NIEA	Mar 2014
5	Observation of nitrate trends in groundwater and liaison with research partners for further investigation.	DOE NIEA	Dec 2015
6	Raise awareness and promote the benefits of effective pollution control and farm nutrient and waste management within the LMA.	DARD Countryside Management Branch	Mar 2014
7	Develop leaflets and articles to promote effective farm nutrient and waste management within the LMA.	DARD Countryside Management Branch	Mar 2014
8	Encourage riparian zone management with an aim to improve biodiversity and minimise sedimentation through practical management measures on farms within the LMA.	DARD Countryside Management Branch	Mar 2014
9	Promote best practice in the use of pesticides on farms within the LMA.	DARD Countryside Management Branch	Mar 2014
10	Promote the control of invasive alien species on farmland within the LMA.	DARD Countryside Management Branch	Mar 2014
11	Conduct invasive alien species recording during river walks and raise awareness on how to prevent the spread of invasive alien species within the LMA.	DOE NIEA	Mar 2014
12	Promote public participation by hosting bi-annual Catchment Stakeholder group meetings, holding bi-lateral meetings with interested groups and individuals and the generation of e-zines.	DOE NIEA	Mar 2014
13	Promote public participation by working with the N I Rivers Trust Development Officer to encourage the establishment of the Main Rivers Trust.	DOE NIEA	Mar 2014
14	Promote the NIEA Water Pollution Hotline through increased advertising, promotion and waterside signage in appropriate areas.	DOE NIEA	Mar 2014

	Action to be taken	Action to be taken by	Target Date
15	Review Rivers Agency's annual watercourse maintenance program within the LMA.	DOE NIEA, DARD Rivers Agency	Mar 2014
16	Highlight external funding opportunities for water management projects to local partners including the Water Quality Improvement Grant.	DOE NIEA	Mar 2014
17	Support local environmental initiatives such as river clean up campaigns.	DOE NIEA	Mar 2014
18	Support pollution prevention campaigns such as 'Reduce Reuse Recycle', 'Bag It & Bin It', 'Stop and Think (Not Down the Sink)'.	DOE NIEA, NIWL	Mar 2014
19	Complete desktop study and risk analysis using available catchment data to identify areas under pressure and allow further investigations on the ground to be carried out within the LMA.	DOE NIEA	Mar 2014
20	Investigate feasibility and practicality of implementing morphological mitigation measures as recommended throughout the LMA.	DARD Rivers Agency	Mar 2014
21	Carry out agricultural advisory site visits where identified as an issue through river walks and spot checks or as identified by stakeholders.	DOE NIEA, DARD Countryside Management Branch	Mar 2014
22	Offer a farm nutrient and waste management advisory visit to farmers following a pollution incident (on referral by NIEA) throughout the LMA.	DARD Countryside Management Branch	Mar 2014

The actions below apply to individual water bodies in the LMA. The 2009 status or ecological potential is shown for each water body.

UKGBNI1NB030302148		River Main tributary	2009 Status: Moderate	
	Action to be taken		Action to be taken by	Target Date
1	Carry out a river walk from Station Road to fork in river at railway line to assess investigate polluting impact on aquatic invertebrates.		DOE NIEA	Mar 2014
2	Carry out monitoring and assessment between Garryduff Road and the railway line to assess causes of dissolved oxygen suppression in this water body.		DOE NIEA	Mar 2014
3	Carry out compliance assessment of industrial consented discharge.		DOE NIEA	Mar 2014
4	Carry out a visual inspection of WWTW at Dunloy.		DOE NIEA	Dec 2013
5	Conduct biological investigations to assess aquatic invertebrates upstream of Carey Isle.		DOE NIEA	Completed

[A number of catchment wide actions also apply to this water body. These can be found on Page JĚ](#)

UKGBNI1NB030302212		Killagan water	2009 Status: Poor	
	Action to be taken		Action to be taken by	Target Date
1	Carry out monitoring and assessment between Corkey Quarry and Kilmandil Road to assess causes of dissolved oxygen suppression in this water body.		DOE NIEA	Mar 2014
2	Carry out compliance assessment of consented industrial discharges including site drainage and private sewage.		DOE NIEA	Mar 2014
3	Carry out a river walk to investigate polluting impacts on aquatic invertebrates.		DOE NIEA	Mar 2014
4	Assess sources of organic pollution including the impact of septic tanks around Dunloy.		DOE NIEA	Mar 2014
5	Conduct biological investigations to assess aquatic invertebrates at Killagan Bridge, A44 Road Bridge, Kilmanoil Bridge and Islegorm.		DOE NIEA	Completed
6	Carry out pollution prevention and enforcement measures in relation to Corkey Quarry.		DOE NIEA	Dec 2015

[A number of catchment wide actions also apply to this water body. These can be found on Page J.](#)



UKGBNI1NB030302156		River Main	2009 Status: Moderate	
	Action to be taken		Action to be taken by	Target Date
1	Carry out a river walk and Dissolved Oxygen survey from Bridge Road to Damstown Road Bridge ( on Bellaghy Rd).		DOE NIEA	Mar 2014
2	Carry out compliance assessment of industrial consented discharges including private sewage, vehicle wash and quarry premises.		DOE NIEA	Mar 2014
3	Conduct biological investigations to assess aquatic invertebrates in Damstown Burn at Pike Hill, Damstown bridge and Damstown Feeder at the bridge.		DOE NIEA	Completed

[A number of catchment wide actions also apply to this water body. These can be found on Page J.](#)

UKGBNI1NB030302234		Cloghmills Water	2009 Status: Good	
	Action to be taken		Action to be taken by	Target Date
1	Carry out monitoring and assessment to assess causes of dissolved oxygen suppression in this water body.		DOE NIEA	Mar 2014
2	Carry out compliance assessment of consented industrial discharge.		DOE NIEA	Mar 2014

[A number of catchment wide actions also apply to this water body. These can be found on Page J.](#)

UKGBNI1NB030302013		River Main	2009 Status: Moderate	
	Action to be taken		Action to be taken by	Target Date
1	Carry out compliance assessment of industrial consented discharge.		DOE NIEA	Mar 2014
2	Upgrading of WWTW at Glarryford by installing a package Rotating Biological Contactor.		NIWL	Completed
3	Upgrading of WWTW at Duneany by installing a package Rotating Biological Contactor.		NIWL	Completed
4	Carry out a visual inspection of WWTW at Glarryford.		DOE NIEA	Completed
5	Carry out a visual inspection of WWTW at Duneany.		DOE NIEA	Completed
6	Investigate identified water quality impacts by carrying out a Dissolved Oxygen survey in the area above Glarryford.		DOE NIEA	Dec 2013

[A number of catchment wide actions also apply to this water body. These can be found on Page J.](#)

UKGBNI1NB030302024		River Main tributary	2009 Status: Moderate	
	Action to be taken		Action to be taken by	Target Date
1	Carry out a visual inspection of WWTW at Carnbeg.		DOE NIEA	Completed
2	Carry out compliance assessment of industrial consented discharges including private sewage discharges.		DOE NIEA	Mar 2014
3	Investigate identified water quality impacts by carrying out a Dissolved Oxygen survey above Dundermot Bridge.		DOE NIEA	Dec 2015

[A number of catchment wide actions also apply to this water body. These can be found on Page J.](#)

UKGBNI1NB030302237		Skerry Water	2009 Status: Moderate	
	Action to be taken		Action to be taken by	Target Date
1	Carry out a visual inspection of WWTW at Newtown Crommelin.		DOE NIEA	Completed
2	Carry out pollution prevention and enforcement measures following a serious fish kill in this water body.		DOE NIEA	Completed

[A number of catchment wide actions also apply to this water body. These can be found on Page J.](#)

UKGBNI1NB030302233		Glenravel Water	2009 Status: MEP	
	Action to be taken		Action to be taken by	Target Date
1	Carry out compliance assessment of Cargan WWTW.		DOE NIEA	Mar 2014
2	Carry out compliance assessment of consented industrial discharges.		DOE NIEA	Mar 2014
3	Investigate feasibility and practicality of implementing morphological mitigation measures as recommended in respect of Dungonnell Dam.		DOE NIEA, NIWL	Dec 2015
4	Carry out compliance assessment visits on hydro power installations to ensure compliance with the Abstraction and Impoundment Regulations.		DOE NIEA	Dec 2015
5	Provide advice on protected area designations in respect of the Garron Plateau.		DOE NIEA	Dec 2015
6	Support local environmental initiatives such as SCAMP in relation to the Garron Plateau.		DOE NIEA, RSPB	Dec 2015
7	Identification of contamination risks from 'source to tap' through the development of drinking water safety plans.		NIWL	Dec 2015

[A number of catchment wide actions also apply to this water body. These can be found on Page J.](#)

UKGBNI1NB030302011		Clogh River	2009 Status: Moderate	
	Action to be taken		Action to be taken by	Target Date
1	Carry out a visual inspection of WWTW in respect of Clogh, Killygore.		DOE NIEA	Mar 2014
2	Upgrading of WWTW at Martinstown under PC10 programme.		NIWL	Dec 2013
3	Carry out compliance assessment of consented industrial discharges.		DOE NIEA	Mar 2014
4	Investigate identified water quality impacts by undertaking a Dissolved Oxygen survey upstream of Glarryford bridge.		DOE NIEA	Dec 2013

[A number of catchment wide actions also apply to this water body. These can be found on Page J.](#)

UKGBNI1NB030302019		Clogh River	2009 Status: Moderate	
	Action to be taken		Action to be taken by	Target Date
1	Carry out compliance assessment of consented industrial discharges.		DOE NIEA	Mar 2014
2	Investigate identified water quality impacts by carrying out a Dissolved Oxygen survey upstream of Glarryford bridge.		DOE NIEA	Dec 2015
<a href="#">A number of catchment wide actions also apply to this water body. These can be found on Page J.</a>				

UKGBNI1NB030302165		River Main tributary	2009 Status: Moderate	
	Action to be taken		Action to be taken by	Target Date
1	Assess forestry operations in relation to Craig's forest.		DOE NIEA	Dec 2015
<a href="#">A number of catchment wide actions also apply to this water body. These can be found on Page J.</a>				

UKGBNI1NB030302157		Aghill Burn	2009 Status: Moderate	
	Action to be taken		Action to be taken by	Target Date
1	Carry out compliance assessment of consented industrial discharges.		DOE NIEA	Mar 2014
2	Carry out a river walk upstream of the routine monitoring station to identify possible sources of pollution.		DOE NIEA	Dec 2013
<a href="#">A number of catchment wide actions also apply to this water body. These can be found on Page J.</a>				

UKGBNI1NB030302158		River Main	2009 Status: Moderate	
	Action to be taken		Action to be taken by	Target Date
1	Carry out a visual inspection of WWTW at Tullygrawley and Railway View.		DOE NIEA	Completed
2	Carry out compliance assessment for consented industrial discharges.		DOE NIEA	Mar 2014
<a href="#">A number of catchment wide actions also apply to this water body. These can be found on Page J.</a>				

UKGBNI1NB030302231		Cleggan River	2009 Status: Good	
	Action to be taken		Action to be taken by	Target Date
1	Maintain current regulatory controls as water body status is Good or better.		DOE NIEA	Dec 2015
<a href="#">A number of catchment wide actions also apply to this water body. These can be found on Page J.</a>				

UKGBNI1NB030302232		Ticloy Water	2009 Status: Good	
	Action to be taken		Action to be taken by	Target Date
1	Maintain current regulatory controls as water body status is Good or better.		DOE NIEA	Dec 2015
<a href="#">A number of catchment wide actions also apply to this water body. These can be found on Page J.</a>				

UKGBNI1NB030302016		Breckagh Water	2009 Status: Moderate	
	Action to be taken		Action to be taken by	Target Date
1	Assess forestry operations, ascertain felling program in the catchment and engage with forestry field staff to ensure measures are in place to mitigate risks from felling.		DOE NIEA	Dec 2015
2	Assess sources of organic pollution upstream of the routine monitoring point.		DOE NIEA	Mar 2014
3	Carry out fish monitoring and assessment on Priest's Burn at Breckagh Bridge.		DOE NIEA, AFBI	Dec 2015
4	Investigate feasibility and practicality of implementing morphological mitigation measures as recommended including fencing of banks and adequate buffer strips.		DOE NIEA, DARD Countryside Management Branch, DARD Forest Service	Mar 2014
<a href="#">A number of catchment wide actions also apply to this water body. These can be found on Page J.</a>				

UKGBNI1NB030302022		Artoges River	2009 Status: Good	
	Action to be taken		Action to be taken by	Target Date
1	Maintain current regulatory controls as water body status is Good or better.		DOE NIEA	Dec 2015
2	Identification of contamination risks from 'source to tap' through the development of drinking water safety plans.		NIWL	Dec 2015
<a href="#">A number of catchment wide actions also apply to this water body. These can be found on Page J.</a>				

UKGBNI1NB030302015		Braid River	2009 Status: Good	
	Action to be taken		Action to be taken by	Target Date
1	Maintain current regulatory controls as water body status is Good or better.		DOE NIEA	Dec 2015
<a href="#">A number of catchment wide actions also apply to this water body. These can be found on Page J.</a>				

UKGBNI1NB030302023		Braid River	2009 Status: Moderate	
	Action to be taken		Action to be taken by	Target Date
1	Assess sources of organic pollution within this water body.		DOE NIEA	Mar 2014
<a href="#">A number of catchment wide actions also apply to this water body. These can be found on Page J.</a>				

UKGBNI1NB030302010		Braid River	2009 Status: Moderate	
	Action to be taken		Action to be taken by	Target Date
1	Investigate identified water quality impacts in the catchment.		DOE NIEA	Dec 2015
<a href="#">A number of catchment wide actions also apply to this water body. These can be found on Page J.</a>				

<b>UKGBNI1NB030302236</b>	<b>Glen Burn</b>	<b>2009 Status: Good</b>
---------------------------	------------------	--------------------------

	Action to be taken	Action to be taken by	Target Date
1	Maintain current regulatory controls as water body status is Good or better.	DOE NIEA	Dec 2015

[A number of catchment wide actions also apply to this water body. These can be found on Page J.](#)

<b>UKGBNI1NB030302020</b>	<b>Braid River</b>	<b>2009 Status: Good</b>
---------------------------	--------------------	--------------------------

	Action to be taken	Action to be taken by	Target Date
1	Maintain current regulatory controls as water body status is Good or better.	DOE NIEA	Dec 2015

[A number of catchment wide actions also apply to this water body. These can be found on Page J.](#)

<b>UKGBNI1NB030302021</b>	<b>Devenagh Burn</b>	<b>2009 Status: Good</b>
---------------------------	----------------------	--------------------------

	Action to be taken	Action to be taken by	Target Date
1	Conduct biological investigations to assess aquatic invertebrates at Devenagh Bridge and Nuns Bridge.	DOE NIEA	Completed
2	Investigate identified water quality impacts by carrying out a Dissolved Oxygen survey from Devenagh bridge to Nun's bridge.	DOE NIEA	Mar 2014

[A number of catchment wide actions also apply to this water body. These can be found on Page J.](#)

<b>UKGBNI1NB030302018</b>	<b>Braid River</b>	<b>2009 Status: PEP</b>
---------------------------	--------------------	-------------------------

	Action to be taken	Action to be taken by	Target Date
1	Carry out a river walk from Ballykeel bridge to the confluence with Deerfin Burn.	DOE NIEA	Dec 2013
2	Investigate feasibility and practicality of implementing morphological mitigation measures as recommended in the hydromorphology survey report.	DOE NIEA	Dec 2015

[A number of catchment wide actions also apply to this water body. These can be found on Page J.](#)

UKGBNI1NB030302159		River Main tributary	2009 Status: Poor	
	Action to be taken		Action to be taken by	Target Date
1	Conduct biological investigations to assess aquatic invertebrates in Aghoghill Burn at Killybegs bridge, Ballyminstra, and Rose Brook, Aghoghill feeder from Gracehill.		DOE NIEA	Completed
2	Carry out compliance assessment of consented industrial discharges.		DOE NIEA	Mar 2014
3	Carry out pollution prevention and enforcement measures in the area of Killybegs bridge.		DOE NIEA	Completed
4	Carry out a river walk from Gloonan Road to River Main.		DOE NIEA	Mar 2014

[A number of catchment wide actions also apply to this water body. These can be found on Page J.](#)

UKGBNI1NB030302235		Douglas Burn	2009 Status: High	
	Action to be taken		Action to be taken by	Target Date
1	Maintain current regulatory controls as water body status is Good or better.		DOE NIEA	Dec 2015

[A number of catchment wide actions also apply to this water body. These can be found on Page J.](#)

UKGBNI1NB030302161		Kells Water	2009 Status: Good	
	Action to be taken		Action to be taken by	Target Date
1	Maintain current regulatory controls as water body status is Good or better.		DOE NIEA	Dec 2015

[A number of catchment wide actions also apply to this water body. These can be found on Page J.](#)



<b>UKGBNI1NB030302017</b>	<b>Deerfin Burn</b>	<b>2009 Status: Poor</b>
---------------------------	---------------------	--------------------------

	Action to be taken	Action to be taken by	Target Date
1	Conduct biological investigations to assess aquatic invertebrates at Harryville, Milltown, Ballylesson stream at Mageestown and Ballycreggy stream at Ballylesson.	DOE NIEA	Completed
2	Carry out pollution prevention and enforcement measures in response to observed sewage fungus in Ballycreggy stream.	DOE NIEA	Dec 2013
3	Carry out monitoring and assessment into Dissolved Oxygen suppression upstream of Lisminary road bridge.	DOE NIEA	Mar 2014

[A number of catchment wide actions also apply to this water body. These can be found on Page J.](#)

<b>UKGBNI1NB030302160</b>	<b>River Main</b>	<b>2009 Status: Moderate</b>
---------------------------	-------------------	------------------------------

	Action to be taken	Action to be taken by	Target Date
1	Carry out a visual inspection of WWTW at Straid.	DOE NIEA	Completed
2	Carry out a visual inspection of WWTW at Slaght.	DOE NIEA	Dec 2013

[A number of catchment wide actions also apply to this water body. These can be found on Page J.](#)

<b>UKGBNI1NB030302199</b>	<b>Glenwhirry River</b>	<b>2009 Status: MEP</b>
---------------------------	-------------------------	-------------------------

	Action to be taken	Action to be taken by	Target Date
1	Assess forestry operations in relation to Ballyboley and Capanagh forests.	DOE NIEA	Dec 2015
2	Assess significance of sheep dip usage and review groundwater authorisations where appropriate.	DOE NIEA	Dec 2015
3	Investigate feasibility and practicality of implementing morphological mitigation measures as recommended in respect of Killylane reservoir.	DOE NIEA, NIWL	Dec 2015
4	Identification of contamination risks from 'source to tap' through the development of drinking water safety plans.	NIWL	Dec 2015

[A number of catchment wide actions also apply to this water body. These can be found on Page J.](#)

UKGBNI1NB030302201		Glenwhirry River	2009 Status: Good	
	Action to be taken		Action to be taken by	Target Date
1	Maintain current regulatory controls as water body status is Good or better.		DOE NIEA	Dec 2015
<a href="#">A number of catchment wide actions also apply to this water body. These can be found on Page J.</a>				

UKGBNI1NB030302168		Connor Burn	2009 Status: Poor	
	Action to be taken		Action to be taken by	Target Date
1	Carry out fish monitoring and assessment at Connor enclosure.		DOE NIEA, AFBI	Dec 2015
2	Investigate feasibility and practicality of implementing morphological mitigation measures as recommended including planting to stabilise the banks.		DOE NIEA, DARD Rivers Agency	Mar 2014
3	Investigate sources of sediment above the weir at Connor enclosure.		DOE NIEA	Mar 2014
<a href="#">A number of catchment wide actions also apply to this water body. These can be found on Page J.</a>				

UKGBNI1NB030302014		Kells Water	2009 Status: Good	
	Action to be taken		Action to be taken by	Target Date
1	Maintain current regulatory controls as water body status is Good or better.		DOE NIEA	Dec 2015
2	Investigate identified water quality impacts in relation to reduced flow at weir during dry weather.		DOE NIEA	Dec 2015
<a href="#">A number of catchment wide actions also apply to this water body. These can be found on Page J.</a>				

UKGBNI1NB030302164		Sharvogues Burn	2009 Status: Moderate	
	Action to be taken		Action to be taken by	Target Date
1	Conduct biological investigations to assess aquatic invertebrates at Sharvogues, downstream of filling station and at Kells Road Bridge.		DOE NIEA	Completed
2	Carry out compliance assessment of consented industrial discharges.		DOE NIEA	Mar 2014
3	Assess significance of sheep dip usage and review groundwater authorisations where appropriate.		DOE NIEA	Dec 2015

[A number of catchment wide actions also apply to this water body. These can be found on Page J.](#)

UKGBNI1NB030302150		River Main	2009 Status: Moderate	
	Action to be taken		Action to be taken by	Target Date
1	Carry out compliance assessment of consented industrial discharges.		DOE NIEA	Mar 2014
2	Assess forestry operations in Randalstown forest.		DOE NIEA	Dec 2015
3	Carry out a visual inspection of WWTW and septic tanks including Coolsythe Road and Connaught Road.		DOE NIEA	Completed
4	Carry out a visual inspection of WWTW and septic tanks at Procklis.		DOE NIEA	Completed
5	Carry out compliance assessment visits on hydro power installations to ensure compliance with the Abstraction and Impoundment regulations.		DOE NIEA	Dec 2015
6	Carry out fish monitoring and assessment at Dunmore Bridge.		DCAL	Completed
7	Investigate feasibility and practicality of implementing morphological mitigation measures as recommended including fencing and planting native vegetation.		DOE NIEA, DARD Countryside Management Branch	Mar 2014

[A number of catchment wide actions also apply to this water body. These can be found on Page J.](#)

UKGBNI4NB002		Ballymena (Groundwater body)		2009 Status: Poor	
Action to be taken		Action to be taken by	Target Date		
1	Observation of nitrate trends in groundwater and liaison with research partners for further investigation and timescale for recovery.	DOE NIEA	Dec 2015		
2	Raise awareness and promote the benefits of effective pollution control and farm nutrient and waste management within the LMA.	DARD Countryside Management Branch	Mar 2014		
3	Develop leaflets and articles to promote effective farm nutrient and waste management within the LMA.	DARD Countryside Management Branch	Mar 2014		

[A number of catchment wide actions also apply to this water body. These can be found on Page J.](#)

## **What other measures are being implemented to maintain and improve the water environment in the Braid & Main LMA?**

The programme of measures described in the Neagh Bann River Basin Management Plan has been categorised into two types of measures: existing and planned and supplementary. Existing and planned measures aim to ensure that existing water uses are appropriately managed and that the water environment remains at good status.

Existing and planned measures include those which have been put in place to meet legal requirements. Those which apply in this LMA include:

- The Birds Directive (79/409/EEC);
- The Drinking Water Directive (80/778/EEC) as amended by Directive (98/83/EC);
- The Environmental Impact Assessment Directive (85/337/EEC);
- The Sewage Sludge Directive (86/278/EEC);
- The Major Accidents Directive (96/82/EC);
- The Urban Waste-water Treatment Directive (91/271/EEC);
- The Plant Protection Products Directive (91/414/EEC);
- The Nitrates Directive (91/676/EEC);
- The Habitats Directive (92/43/EEC); and
- The Integrated Pollution Prevention Control Directive (96/61/EC).

A number of other existing and planned measures apply in this LMA:

- Cost recovery for water use and promotion of efficient and sustainable water use;
- Abstraction and impoundment control;
- Point source and diffuse source discharge control;
- Controls on physical modifications to surface waters;
- Prevention or reduction of the impact of accidental pollution incidents;
- Authorisation of discharges to groundwater;
- Priority substances control;
- Controls on other activities impacting on water status.

Further information on existing and planned measures for each sector is available on the programme of measures section of the website.

Supplementary Measures are a number of Northern Ireland wide measures which were agreed by all relevant Departments and Agencies in Northern Ireland including DCAL, DARD, DOE, DRD, NIEA, Loughs Agency and NI Water. Supplementary measures have been identified for the following sectors:

- Abstraction and flow regulation;
- Diffuse and point source (Agriculture, Collection & treatment of sewage, Urban Development, Forestry, Industry and other business, Waste);
- Freshwater Morphology and Marine Morphology; and
- Invasive Alien Species

Progress on the implementation of these supplementary measures listed in the RBMPs was reported to the European Commission in December 2012. This LMA action plan is an element in the series of supplementary measures for the Neagh Bann RBD.

**What measures are agreed for water dependent Natura 2000 sites in unfavourable condition?**

Special Areas of Conservation (Habitats Directive) and Special Protection Areas (Birds Directive) are assessed as being in favourable or unfavourable condition. These areas have been examined to determine if water dependent features are present.

There are no specific measures for the Garron Plateau and Rea's Wood & Farr's Bay Special Areas of Conservation as there are no water related adverse activities causing the condition assessment of the water dependent features. The Main Valley Bogs Special Area of Conservation has water dependent features which are in unfavourable condition.

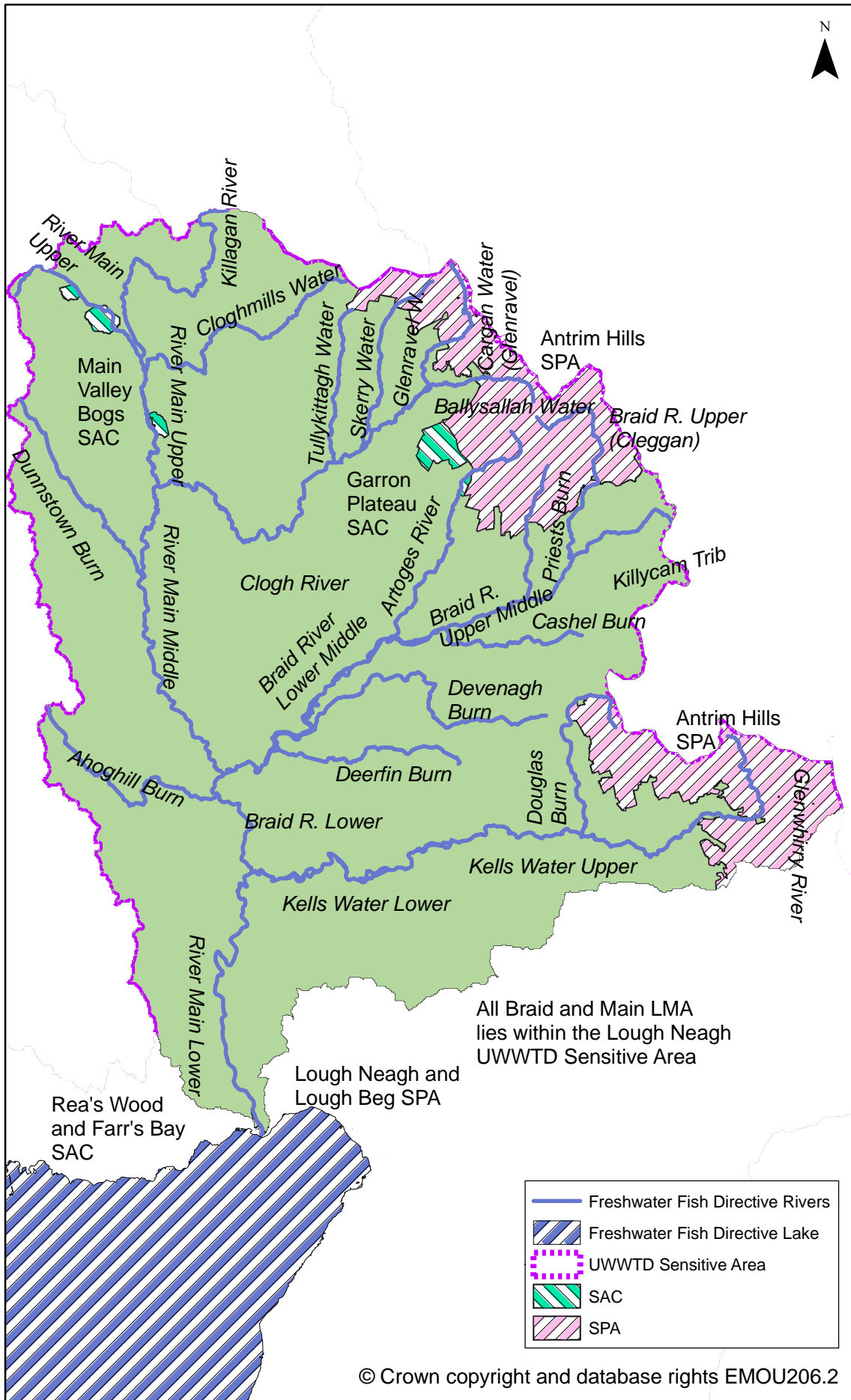
**Table 2: Measures for water dependent features of Special Areas of Conservation**

Name	Current condition assessment of water dependent features	Measures in place
Main Valley Bogs	Active raised bogs unfavourable due to water management (including drainage, dredging or alterations to the water table. Could be too much water or too little) and burning	Investigation ongoing; Management agreement / scheme: Wells in place for hydrology assessment

The Lough Neagh and Lough Beg Special Protection Area in this LMA is in unfavourable condition. Special Protection Areas in unfavourable condition require investigation to identify external and internal factors. The issues are unclear; may be changes in migratory patterns, disturbance to high tide roost sites, water quality and/or ecological factors. The condition of all the features of Antrim Hills Special Protection Area has not yet been assessed. Further details on Special Areas of Conservation and Special Protection Areas in Braid and Main LMA are available in the protected areas section of the website.

This page is intentionally blank

### Map 3: Protected Areas in Braid and Main LMA





## Protected areas in Braid and Main LMA

The LMA supports important habitats and wildlife. These areas have been designated under European Directives and require special protection. The protected areas are summarised in the following table.

**Table 3: Protected areas in Braid and Main LMA**

Protected Area Type	Location
<p><b>Waters used for the abstraction of drinking water (drinking water protected areas)</b></p>	<p>There are 5 surface water protected areas for drinking water. There is 1 groundwater protected area for drinking water.</p>
<p><b>Areas designed to protect economically significant aquatic Species</b></p> <p>Freshwater Fish Directive (78/659/EEC)</p> <p>Shellfish Waters Directive (79/923/EC)</p>	<p>There are 287 km of rivers identified under the Freshwater Fish Directive, all designated Salmonid.</p> <p>There are no designated shellfish waters.</p>
<p><b>Bathing Waters</b> These are bathing waters identified under the Bathing Waters Directives (76/160/EEC)</p>	<p>There are no identified bathing waters.</p>
<p><b>Nutrient Sensitive Areas</b></p> <p>Areas designated as sensitive under the Urban Waste Water Treatment Directive (91/271/EEC)</p> <p>Nitrates Directive (91/676/EEC)</p>	<p>There is 1 Urban Waste Water Treatment Directive sensitive area; Lough Neagh.</p> <p>A total territory approach has been adopted in Northern Ireland for the Nitrates Directive.</p>
<p><b>Areas designated for the protection of habitats or species (Natura 2000 sites)</b> These are areas designated for the protection of habitats or species where the maintenance or improvement of the status of water is an important factor in their protection.</p> <p>Habitats Directive (92/43/EEC)</p> <p>Birds Directive (79/409/EEC)</p>	<p>There are 3 water dependent Special Areas of Conservation; Garron Plateau, Rea's Wood &amp; Farr's Bay and Main Valley Bog.</p> <p>There are 2 Special Protection Areas; Lough Neagh and Lough Beg and Antrim Hills.</p>

## Abbreviations

Term	Explanation
DARD	Department of Agriculture and Rural Development
DCAL	Department of Culture, Arts and Leisure
DOE	Department of the Environment
EP	Ecological Potential – the status of a heavily modified water body measured against the maximum ecological quality it could achieve given the constraints imposed upon it by those heavily modified characteristics necessary for its use. There are four classes for the status of heavily modified water bodies: good ecological potential or better (GEP), moderate ecological potential (MEP), poor ecological potential (PEP) and bad ecological potential (BEP).
LMA	Local Management Area
NIEA	Northern Ireland Environment Agency
NIWL	Northern Ireland Water Limited
RSPB	Royal Society for the Protection of Birds
WWTW	Waste Water Treatment Works

## **Working together to implement the Local Management Area Action Plan.**

Local measures are also being applied in this LMA. There are a number of projects and initiatives run, for example, by local communities, angling groups and voluntary environmental organisations that will contribute to achieving the objectives we have set for our waters.

Work is currently ongoing to establish a Rivers Trust within this LMA.

If you are running a project or carrying out work that will assist in protecting the water environment or water dependant features, or restoring natural waters then we would encourage you to let us know at the Lower Neagh Bann Catchment Stakeholder Group meetings or by contacting the Catchment Management Officer, Gerry Wilson.

Email: [gerry.wilson@doeni.gov.uk](mailto:gerry.wilson@doeni.gov.uk)

Telephone: 028 9262 3219

Further details are available at [www.doeni.gov.uk/niea/neagh-workingtogether](http://www.doeni.gov.uk/niea/neagh-workingtogether)

## **Water Pollution Hotline:**

**\*Freephone 0800 80 70 60**

This line is manned 24 hours a day, 7 days a week.

\*Mobile calls are charged at standard network rates.

If you become aware of a water pollution incident please call the Water Pollution Hotline in confidence giving the location and nature of the pollution.



Our aim is to protect, conserve and promote the natural environment and built heritage for the benefit of present and future generations.

Northern Ireland Environment Agency  
Water Management Unit  
17 Antrim Road  
Lisburn  
BT28 3AL  
T. (028) 9262 3004  
[www.doeni.gov.uk/niea](http://www.doeni.gov.uk/niea)