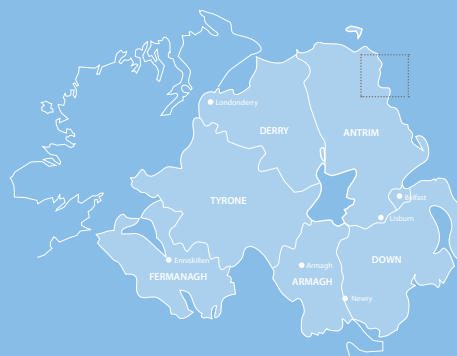


Bathing Water Profile

Waterfoot

May 2019



Department of
**Agriculture, Environment
and Rural Affairs**

www.daera-ni.gov.uk



**INVESTORS
IN PEOPLE**

Map of Northern Ireland's Bathing Waters 2019



Background to Bathing Water Profiles

This is one of a series of profiles which cover all 26 of Northern Ireland's identified bathing waters. These are the most popular of our bathing areas and have been 'identified' as part of a network of European bathing sites.

The purpose of the bathing water profile is to help the bather to make an informed choice before bathing. The profile gives information on the physical, geographical and hydrological characteristics of the bathing water while assessing the possible pollution risk at the site. Bathing water profiles are a European requirement, under the 2006 Bathing Water Directive (www.daera-ni.gov.uk/articles/bathing-water-quality). It is our intention to review the profiles annually.

All of our bathing waters are monitored on 20 occasions during the bathing season. In Northern Ireland the season runs between 1st June and 15th September each year. Bathing waters are tested for bacteria which indicate faecal contamination. Results are published weekly to bathing water operators and to the NI Direct website (www.nidirect.gov.uk/articles/bathing-water-quality). Waters are then classified annually as Excellent, Good, Sufficient or Poor, as defined by the European Bathing Water Directive, 2006.

Key Information

| | |
|-------------------------------------|---|
| Bathing Water Name | Waterfoot Bathing Water |
| EU bathing water ID number | UKNO4_50700 |
| Location | UK/Northern Ireland/County Antrim/Antrim Coast |
| Year of identification | 2006 |
| Local council area | Causeway Coast and Glens Borough Council |
| Bathing Water Operator | Causeway Coast and Glens Borough Council |
| Description of bathing beach | Sand, approximately 1.0 km in length, bounded by a river to the north |
| Monitoring Point | Northern end of bathing water, D 24192560 (Map 2) |

A Description of Waterfoot bathing water and the surrounding area

Waterfoot bathing water is a popular tourist destination located on the eastern coast of Northern Ireland. The beach is approximately one kilometre in length and is comprised entirely of sand.

The bathing area is backed by sand dunes which run the length of the beach and the village of Waterfoot (approx population 500) is at the northern end of the bathing water. However, the area is essentially rural. There are three caravan parks in the vicinity which cater for the influx of holidaymakers during the summer. The larger one of these backs onto the bathing water at the northern end. In addition there is a large car park and public toilet facilities located at the northern end with a smaller car park to the southern end.

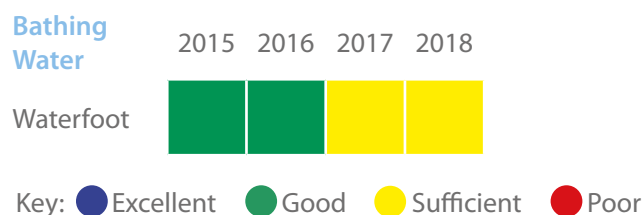
The land use within Waterfoot bathing water catchment area includes improved grassland, acid grass and dense dwarf. The geology of this region is igneous and sedimentary rock of Triassic/Cretaceous to Tertiary age

The Glenariff River flows onto the bathing area at the northern end. There is also the small port of Red Bay to the north of the river.

Bathing Water Quality History at Waterfoot

Waterfoot bathing water was identified in 2006. Monitoring and reporting is carried out by DAERA Marine and Fisheries Division.

Waterfoot Bathing Water Quality 2015-2018



In 2015 the 1976 Bathing Water Directive was replaced by the European Bathing Water Directive 2006/7/EC. This revised directive introduced more stringent bathing water standards. Bathing Waters are classified as Excellent, Good, Sufficient or Poor (see above). This classification is based on a statistical assessment of results from the past four years.

All of Northern Ireland's water quality objectives are set out in River Basin Management Plans (www.daera-ni.gov.uk/topics/water/river-basin-management). Within the Programme of Measures in the River Basin Management Plans there are a number of measures which relate directly to the protection of bathing waters.

Potential sources of pollution and measures to reduce the impact at the bathing water

It should be noted that weekly classification at Waterfoot bathing water is generally Excellent or Good.

The potential sources of pollution have been split into three main categories. These are waste water (sewage) treatment works discharges, waste water systems in urban areas and rural source pollution, including agriculture.

Waterfoot bathing water was identified as being at risk from likely water pollution based on summary analysis of bathing water results, monitoring of associated rivers and some investigative monitoring. The Department carried out investigative work in 2018, however these investigations proved inconclusive as to specific sources of pollution. DAERA Marine and Fisheries Division will continue to work with NIEA and other Departments to identify and resolve sources of pollution.

Are there Waste Water Treatment Works in the vicinity of Waterfoot beach?

Waste waters from the Waterfoot area are pumped to Cushendall waste water treatment works, approximately 2 km to the north. The screened effluent is discharged via a long sea outfall more than 2 km to the north east of the Waterfoot bathing water.

Are there other risks of pollution from waste water systems?

Waterfoot is a popular holiday location attracting many visitors during the summer season. The urbanisation associated with Waterfoot, and in particular the caravan parks located near the bathing area, is a potential source of pollution, particularly during and after periods of prolonged or heavy rainfall. Inland from the coastal development many older properties are served by private septic tanks. In the event of very heavy rainfall a collection system may not be able to deal with all the flow received. A portion of the contents of the collection system may overflow to a waterway under storm conditions. [This is why there is general advice not to bathe during or up to 2 days after such rain.](#)

The municipal collection and treatment of waste water has the potential to cause pollution because all combined collection systems must be designed to overflow in periods of extreme wet weather or

following failure of the system. If systems are not designed in that way, then sewers may overflow into residential areas. Within the wider Waterfoot and Cushendall area there are combined sewer overflows (CSO), emergency overflows and wastewater pumping stations with associated emergency overflows as shown on Map 1.

In order to reduce the potential for pollution in the water environment from these systems NIEA requires that all current and proposed systems meet the requirements of the Urban Wastewater Treatment Directive (www.daera-ni.gov.uk/publications/waste-water-treatment-works-discharges-and-ec-urban-waste-water-treatment-directive) and the Water Framework Directive (WFD).

During the expansion of any urban area, there is the potential for misconnections between the sewer system and surface drains, which may allow untreated wastewater to enter the water environment. When these become apparent, NIEA pursues them as pollution incidents.

A further measure in tackling urban pollution is through the use of sustainable urban drainage systems (SUDS), which NIEA encourages through its SUDS Strategy. Other measures include compliance with the Northern Ireland Water Order 1999 and implementation of Pollution Prevention Guidelines (www.netregs.org.uk/library_of_topics/pollution_prevention_guides.aspx).

Are there risks from agriculture and rural activities?

Agriculture is a major industry in Northern Ireland and the catchment area of Waterfoot bathing water, through which the Glenariff river flows, has a significant amount of improved grassland. Areas within the catchment where agriculture is the dominant land use may be subjected to inputs from chemical fertilisers and organic wastes which can contribute to pollution problems in the surrounding area. Prolonged periods of rainfall can cause surface runoff of these organic wastes, such as animal slurries, contributing the bacteria content in the water environment.

The Nitrates Action Programme Regulations (Northern Ireland) 2014 (previously the Nitrates Action Programme Regulations (Northern Ireland) 2010) and the Phosphorus (Use in Agriculture) Regulations (Northern Ireland) 2014 were introduced to improve the use of nutrients on farms and as a result improve water quality throughout Northern Ireland. The effectiveness of these regulations is continually reviewed through monitoring, enforcement and education.

Are there other potential sources of pollution?

Other sources of pollution exist in this bathing area, these include;

- Dogs
- Horses
- Litter
- Fly tipping

All issues have been addressed through local signage to ensure that these controllable causes of pollution do not affect the bacteria content of the water.

NIEA have compiled River Basin Management Plans, these take an integrated approach to the protection, improvement and sustainable use of the water environment. Each plan identifies existing pollution reduction programmes and additional measures which could be implemented to maintain or improve the water quality.

Waterfoot is located in the North Eastern River Basin Management Plan - further details can be found at www.daera-ni.gov.uk/publications/north-eastern-river-basin-management-plan-2015-2021

Is there evidence of short term water pollution events at Waterfoot?

From 2015-2018 there were five confirmed pollution incidents within 3kms of the bathing water. Four of these events occurred during the bathing seasons, three of which were reported by DAERA Marine and Fisheries Division.

What should I do if I see a pollution incident?

If you see a water pollution incident, you should immediately contact NIEA through the Emergency Water Pollution Hotline, which is operated 24 hours.

Phone: 0800 807060

When a pollution incident is reported or pollution is found to be affecting the water quality of a bathing water, an immediate investigation is instigated. All possible sources of pollution are checked. In addition, a resample will be collected to monitor whether the beach is still polluted. Bathing waters may be closed (by local authority or controlling body) until the water quality has improved and levels of bacteria are within mandatory standards.

Macro-Algae, Phytoplankton and Cyanobacteria (blue-green algae)

Waterfoot bathing water is not at risk of a proliferation of macro-algae, phytoplankton or cyanobacteria (blue/green algae).

Daily water quality forecasts

There is presently no facility to predict bathing water quality on a daily basis. However, the general advice remains: do not bathe during or for up to 2 days after heavy rainfall events.

Contact details

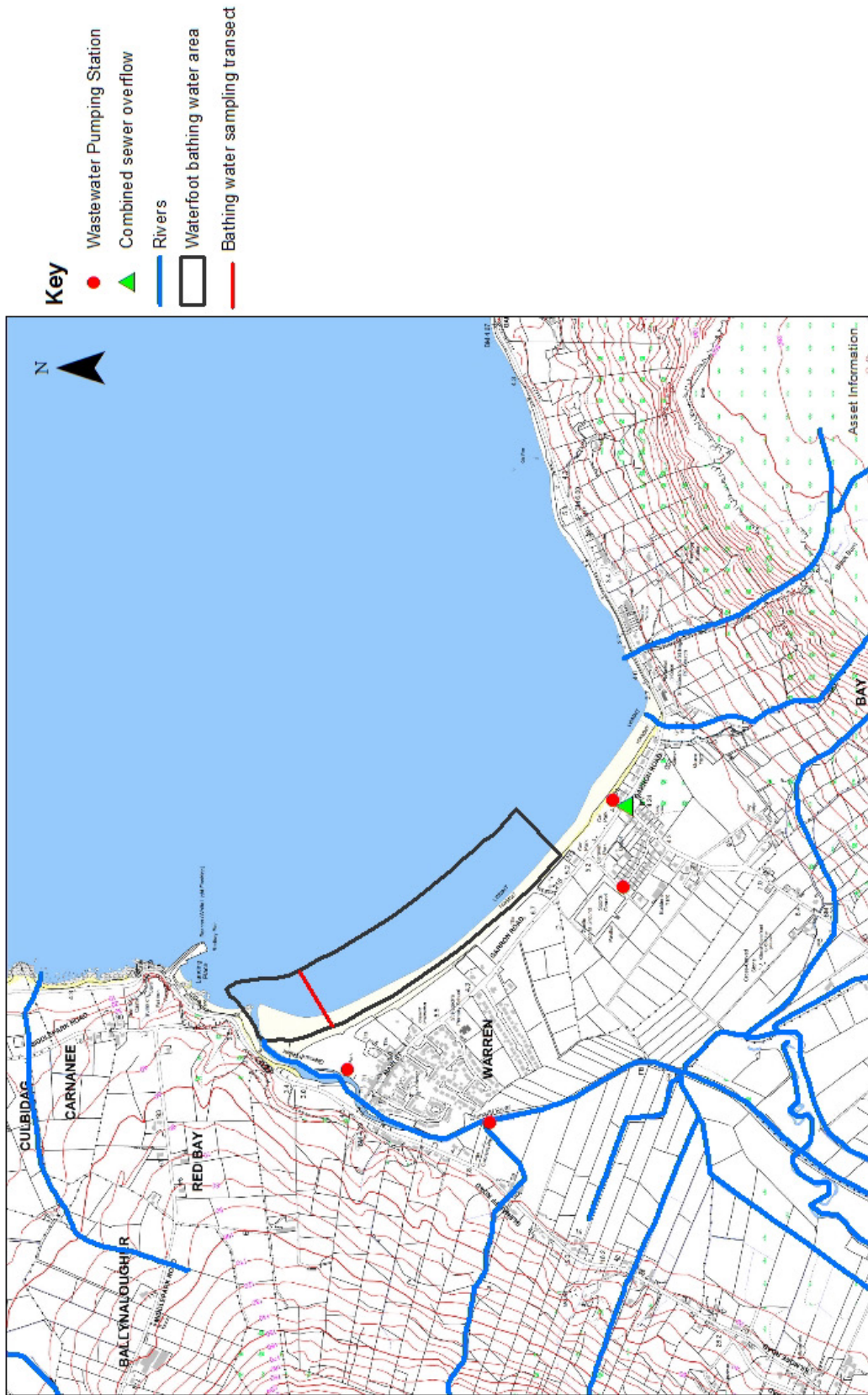
For general information about bathing water

DAERA Marine and Fisheries Division
17 Antrim Road
Tonagh
Lisburn, BT28 3AL
Email: Marine.InfoRequests@daera-ni.gov.uk
Phone: 028 9262 3244

Water Pollution 24hr Hotline Phone: 0800 807060

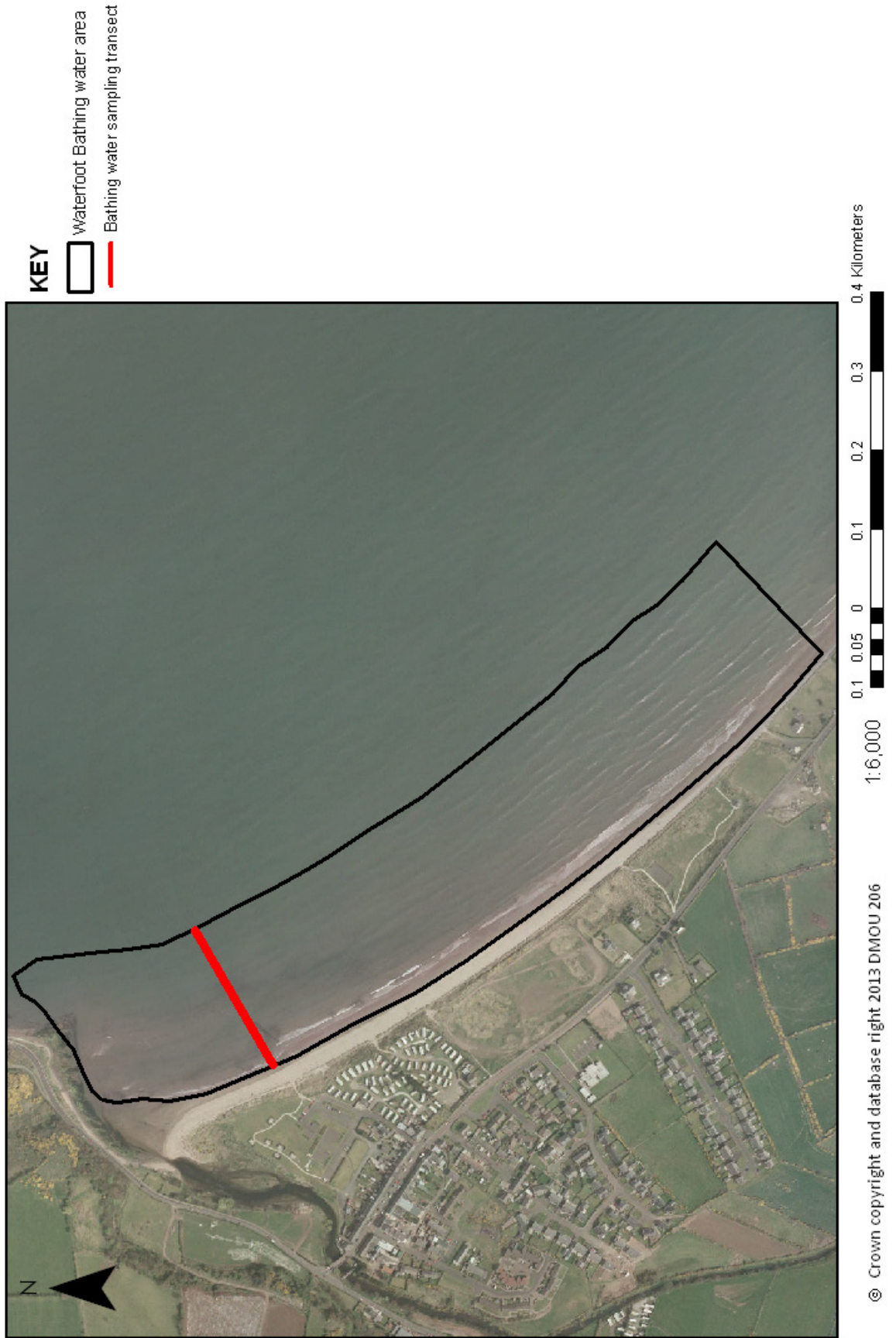
Local Authority Causeway Coast and Glens Borough Council
Sheskburn House
7 Mary Street
Ballycastle
BT54 6QH
Phone: 028 2076 2225

Map 1
Waterfoot Bathing Water -
Potential Pollution Sources



Crown Copyright and is reproduced with the permission of Land & Property Services under delegated authority from the Controller of Her Majesty's Stationery Office. © Crown copyright and database right 2018 DMOU206

Map 2
Waterfoot Bathing Water -
EC Bathing Water Sample Location



Department of Agriculture, Environment and
Rural Affairs
Marine and Fisheries Division
17 Antrim Road
Tonagh
Lisburn
BT28 3AL

Water Pollution Hotline: 0800 807060
Email: Marine.InfoRequests@daera-ni.gov.uk

ISBN: 978-1-84807-973-1



Department of
**Agriculture, Environment
and Rural Affairs**

www.daera-ni.gov.uk



**INVESTORS
IN PEOPLE**