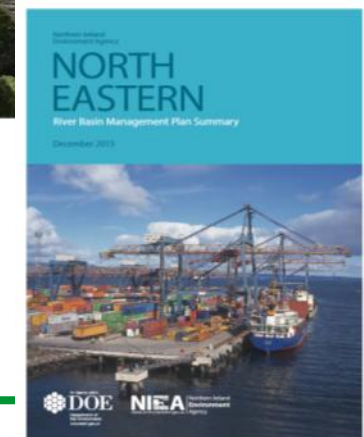
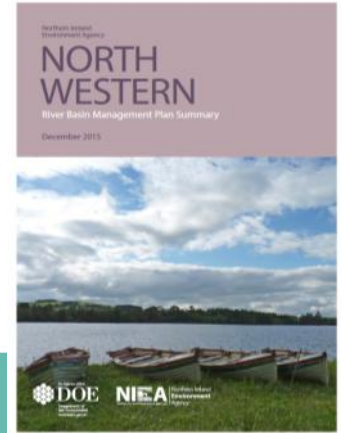


Background

- The plans set out current status, objectives, and national measures for 2015-2021
- Progress report on measures due in 2018
- Next published classification will be in 2018

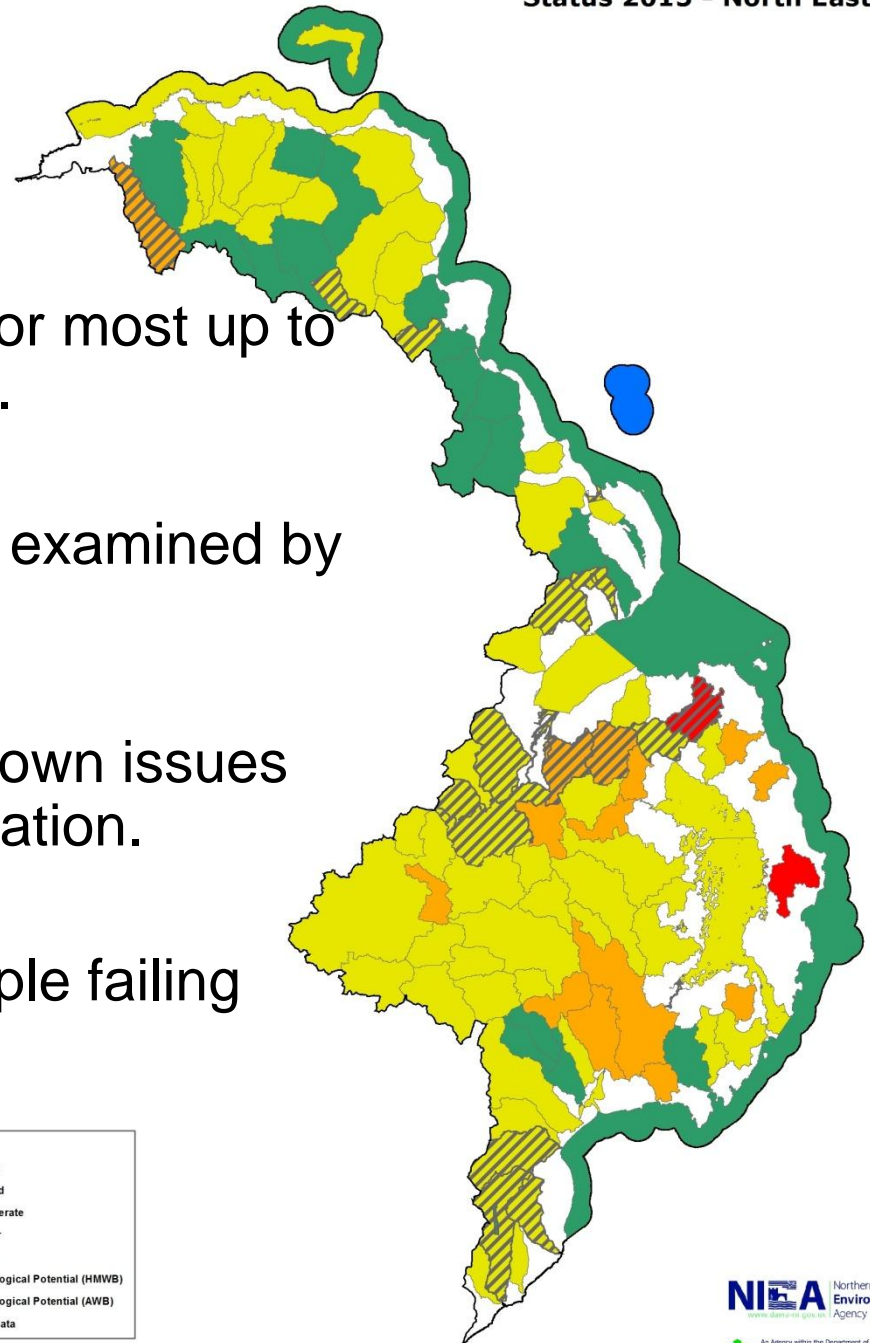


Status 2015 and Targets 2021

– % Good or better

Type	NW	NB	NE	All
All Surface waters	45	26	24	32
Groundwater	82	37	43	65
All WBs	52	27	26	37
TARGETS				
All Surface waters	85	69	52	70
Groundwater	82	37	43	65
All WBs	84	66	51	70

Prioritisation NE

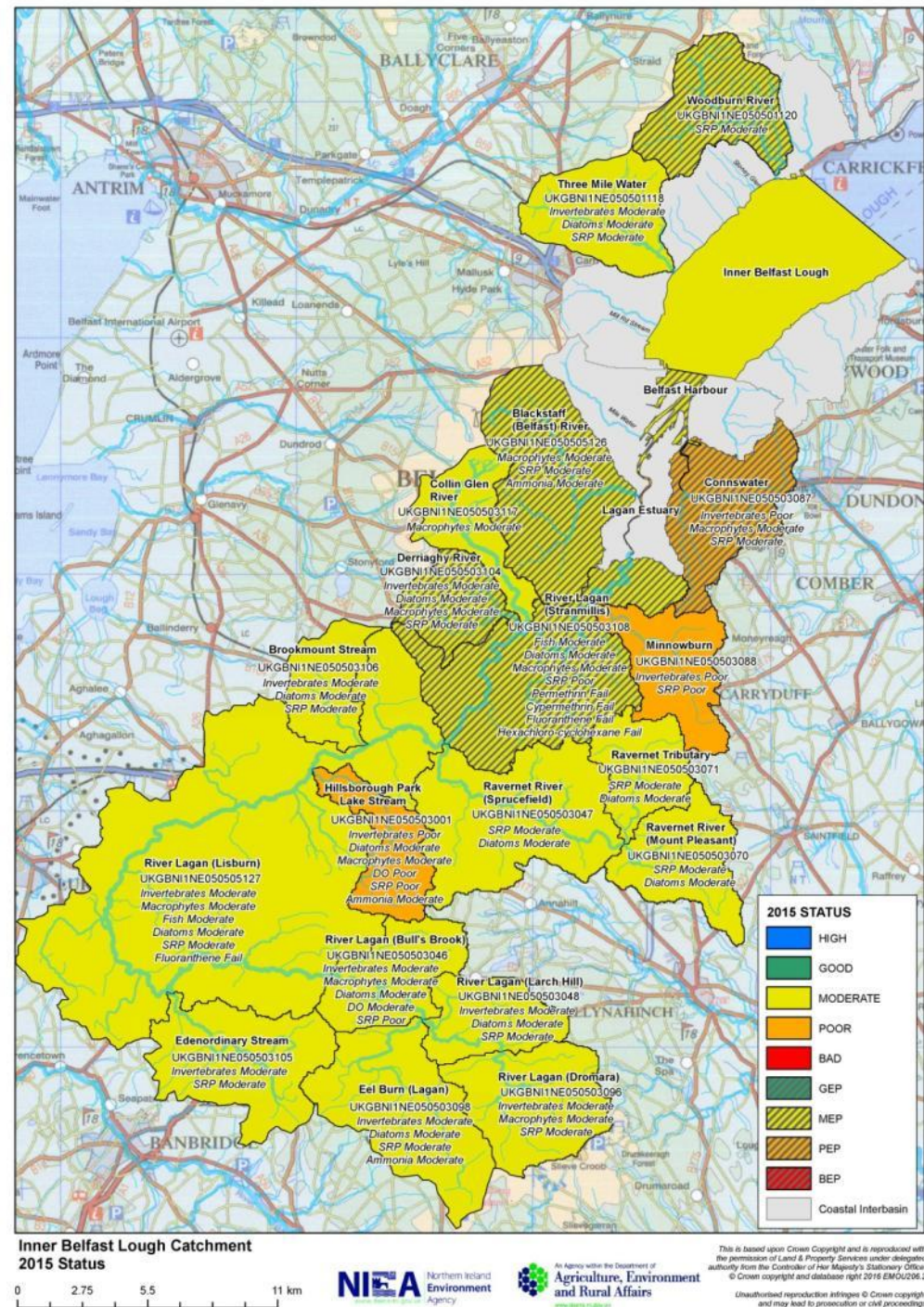


- All water bodies were reviewed for most up to date data and reasons for failure.
- Potential for improvements were examined by NIEA.
- Water bodies with a variety of known issues were selected for further investigation.
- Single failing elements and multiple failing elements.

Targeted Action

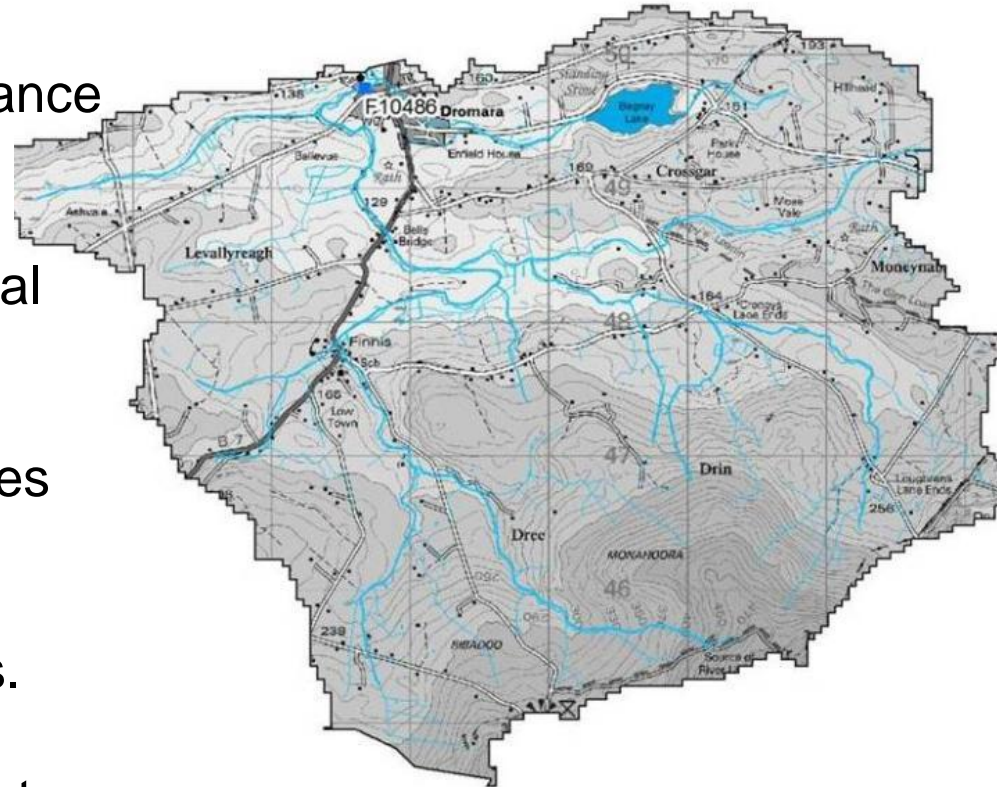
- Each water body study has actions specific to issues and pressures identified within it.
- Eg. Upper Dromara, Lagan.

Failures in invertebrates, macrophytes and soluble reactive phosphorus (SRP).



Actions - Upper Dromara

- Additional nutrient monitoring to see where enrichment is entering the system.
- Weighted agricultural cross compliance visits in this catchment for 2015.
- Increased inspections on agricultural businesses in area of high run off.
- Compliance of consented discharges checked.
- Checking areas for misconnections.
- Tracing of water courses and culverts.



Actions - Partner Projects

NIEA support other projects in a variety of ways.

- Riverfly
- Data, erosion maps, survey design advice.
- Investigations of issues highlighted, such as Glas-na-Bradán pipe survey.



Thank you

Charmaine.Beer@daera-ni.gov.uk

02892 623229

Aideen.Kelly@daera-ni.gov.uk

02892 633438

