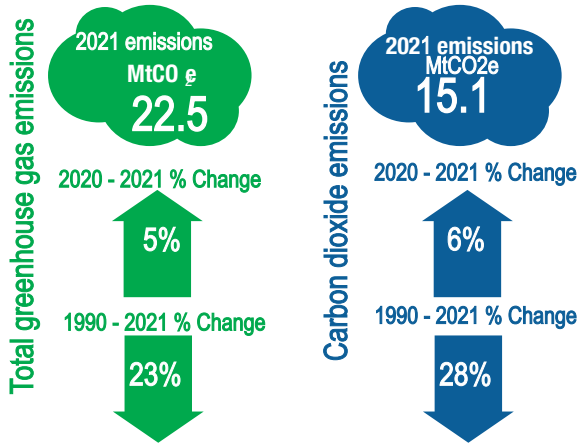
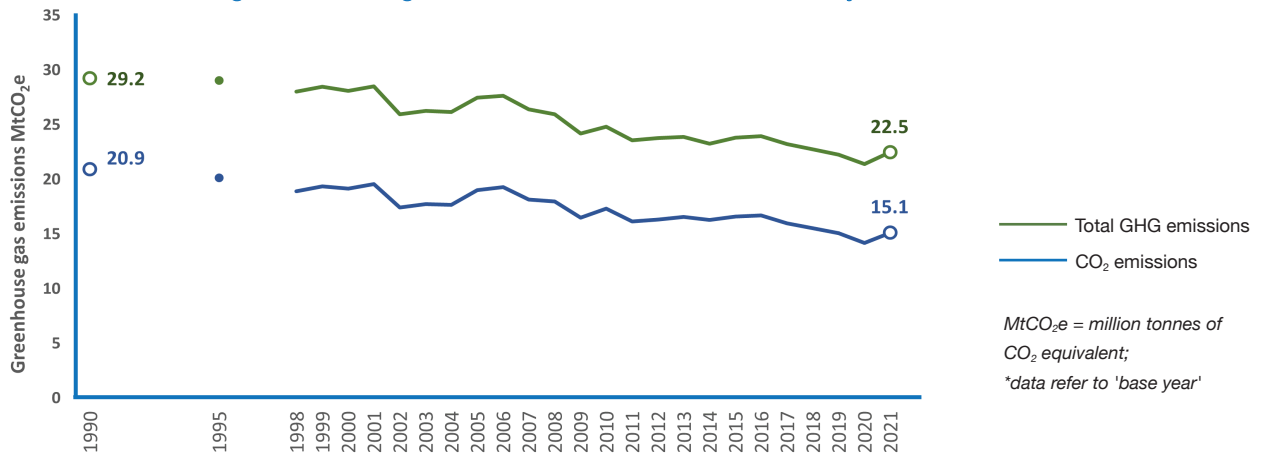
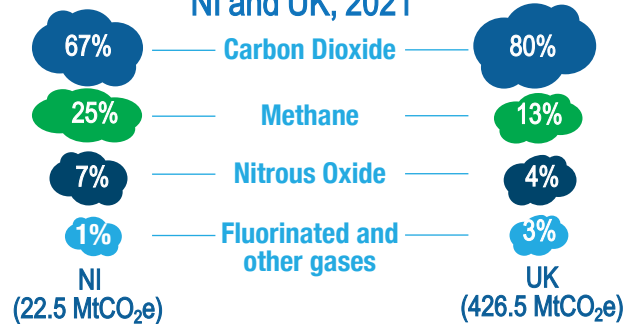


NI Greenhouse Gas Statistics 1990-2021

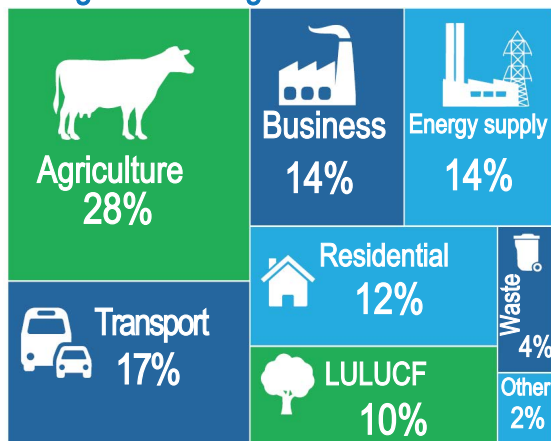
2021 NI greenhouse gas emissions have decreased by 23% since 1990*



Composition of greenhouse gas emissions (%), NI and UK, 2021

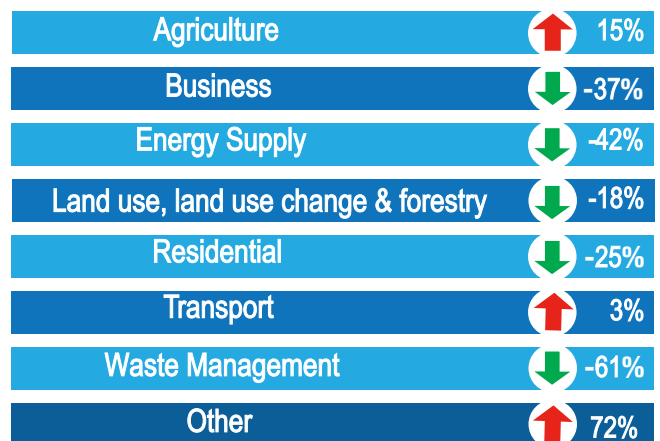


Agriculture was the largest emitting sector of NI greenhouse gas emissions in 2021



*Other consists of Public and Industrial processes

Energy Supply delivered the largest reduction in emissions from 1990 to 2021 (-2.2 MtCO₂e)



Sustainability at the heart of a living, working, active landscape valued by everyone.