

Marine and Fisheries Division Update

15 December 2020



Claire Vincent
Acting Director



Department of
**Agriculture, Environment
and Rural Affairs**

www.daera-ni.gov.uk

***Sustainability** at the heart of a living, working,
active landscape valued by everyone.*

Introduction



- Bathing Waters & SWIM Project
- Other monitoring work
- Managing coastal change
- Dundrum Bay and modelling
- Live and upcoming consultations



Department of
**Agriculture, Environment
and Rural Affairs**

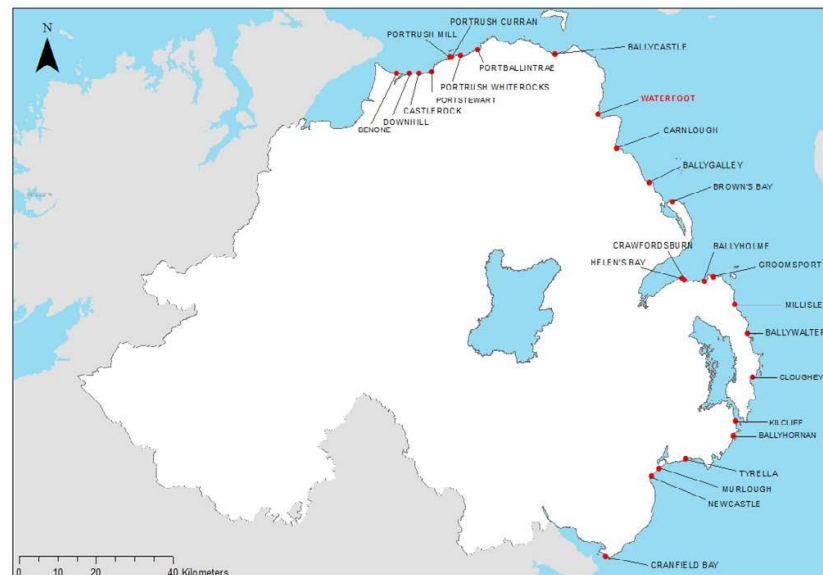
www.daera-ni.gov.uk

*Sustainability at the heart of a living, working,
active landscape valued by everyone.*

Compliance for Northern Irelands Identified Bathing Waters

2020

BATHING WATER	2020
Magilligan (Benone)	Excellent
Magilligan (Downhill)	Excellent
Castlerock	Excellent
Portstewart	Excellent
Portrush (Mill) West	Excellent
Portrush (Curran) East	Good
Portrush (Whiterocks)	Excellent
Portballintrae Salmon Rock	Excellent
Ballycastle	Good
Waterfoot	Sufficient
Carnlough	Sufficient
Ballygally	Good
Brown's Bay	Good
Helen's Bay	Excellent
Crawfordsburn	Excellent
Ballyholme	Sufficient
Groomspoint	Excellent
Millisle	Excellent
Ballywalter	Good
Cloughey	Excellent
Tyrella	Excellent
Murlough Co Down	Excellent
Newcastle	Sufficient
Cranfield (Cranfield Bay)	Excellent
Kilclief	Excellent
Ballyhornan	Excellent



17	Excellent
5	Good
4	Sufficient
0	Poor



Department of
**Agriculture, Environment
and Rural Affairs**

www.daera-ni.gov.uk

*Sustainability at the heart of a living, working,
active landscape valued by everyone.*

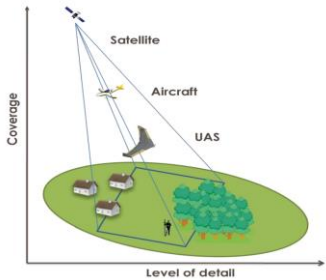
Compliance comparison for Northern Ireland's Identified Bathing Waters.

BATHING WATER	2017	2018	2019	2020
Magilligan (Benone)	Excellent	Excellent	Excellent	Excellent
Magilligan (Downhill)	Excellent	Excellent	Excellent	Excellent
Castlerock	Excellent	Good	Good	Excellent
Portstewart	Excellent	Excellent	Excellent	Excellent
Portrush (Mill) West	Excellent	Excellent	Excellent	Excellent
Portrush (Curran) East	Sufficient	Good	Good	Good
Portrush (Whiterocks)	Excellent	Excellent	Excellent	Excellent
Portballintrae	Excellent	Excellent	Excellent	Excellent
Ballycastle	Good	Excellent	Good	Good
Waterfoot	Sufficient	Sufficient	Sufficient	Sufficient
Carnlough	Sufficient	Good	Good	Sufficient
Ballygally	Good	Good	Good	Good
Brown's Bay	Good	Good	Good	Good
Helen's Bay	Excellent	Excellent	Excellent	Excellent
Crawfordsburn	Good	Good	Good	Excellent
Ballyholme	Poor	Sufficient	Sufficient	Sufficient
Groomsport	Excellent	Excellent	Excellent	Excellent
Millisle	Good	Excellent	Good	Excellent
Ballywalter	Sufficient	Sufficient	Good	Good
Cloughey	Not identified	Good	Excellent	Excellent
Tyrella	Excellent	Excellent	Excellent	Excellent
Murlough Co Down	Excellent	Excellent	Excellent	Excellent
Newcastle	Sufficient	Sufficient	Sufficient	Sufficient
Cranfield (Cranfield Bay)	Excellent	Excellent	Excellent	Excellent
Kilclief	Not identified	Excellent	Excellent	Excellent
Ballyhornan	Not identified	Excellent	Excellent	Excellent

Excellent
Good
Sufficient
Poor

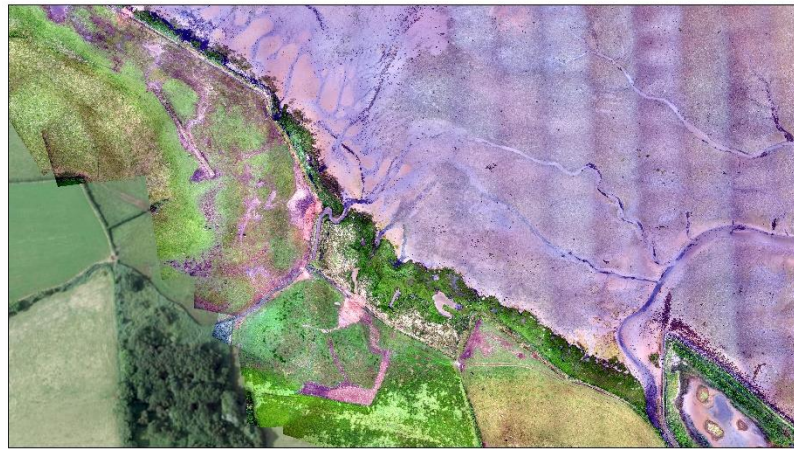
Other Marine Monitoring Work 2020

Remote Observation – using technology



Strangford Lough: Castle Espie Saltmarsh

Drone Imagery 2020



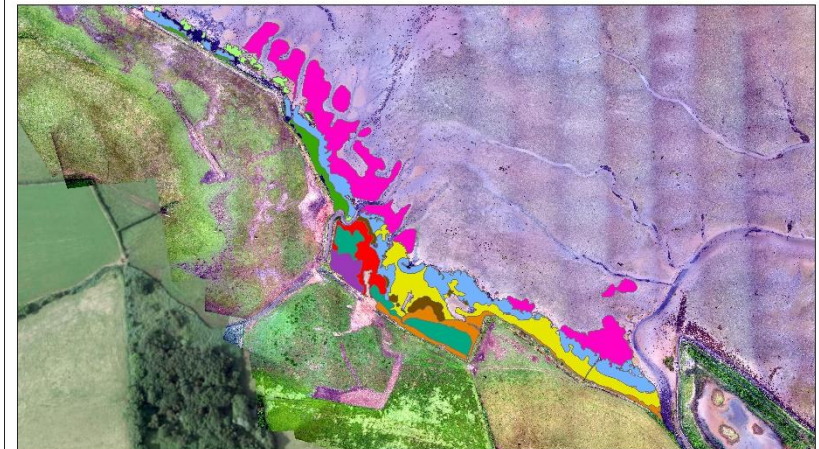
© Crown Copyright & Database Right 2020 – SpatialNI is a service provided by Ordnance Survey of Northern Ireland®

0 50 100 m



Strangford Lough: Castle Espie Saltmarsh

Community Map 2020



© Crown Copyright & Database Right 2020 – SpatialNI is a service provided by Ordnance Survey of Northern Ireland®

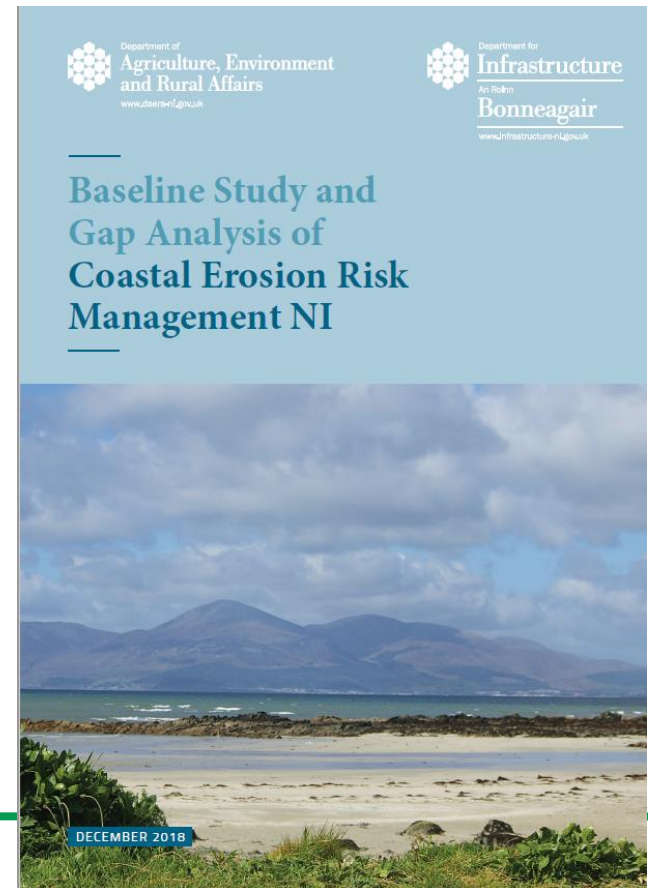


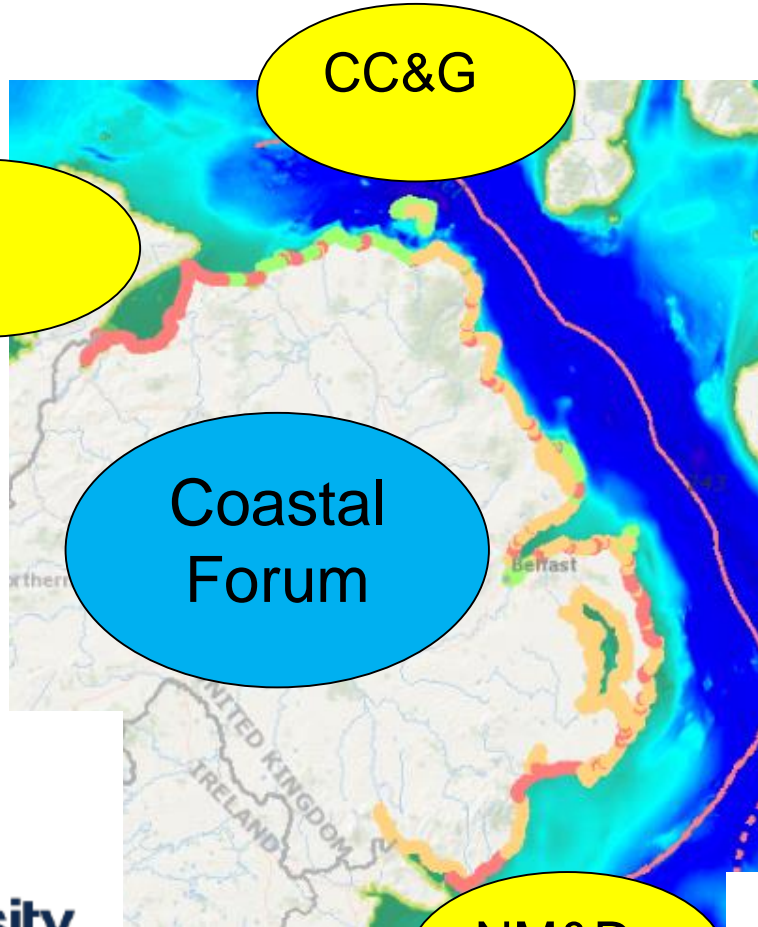
0 50 100 m



Managing Coastal Change

- No legislation in Northern Ireland governing strategic approach to management of our coastline
- Recognised by previous Ministers
- Coastal Forum established to address
- Working group – working with
 - Coastal councils
 - National Trust
 - Afbi
 - Ulster University
 - GSNI
- 3D Coastal Survey in 2021
 - Topographic and bathymetric LiDAR
 - Satellite derived bathymetry





CCAP - Afbi
Ards Peninsula



The Development of Catchment Ecosystem Models

Source to.....Sea



Opportunistic green algae –
indicative of elevated nutrients
and a WFD classification metric



Shellfish flesh quality – indicative
of faecal indicator organism loads
WFD Protected areas



Department of
**Agriculture, Environment
and Rural Affairs**

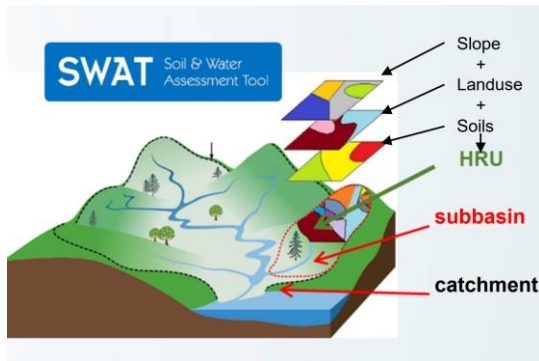
www.daera-ni.gov.uk

*Sustainability at the heart of a living, working,
active landscape valued by everyone.*

Collaborative Project – AFBI, NI Water, FSA and DAERA

Dundrum Ecosystem Modelling – AFBI

Understanding sources and pathways for pollution from bacteria and nutrients



SWAT (Soil & Water Assessment Tool)



Drainage Area Model (NIW) then Integrated with SWAT

Live consultations – M&FD

- Consultation on the development of fisheries management measures for Marine Protected Areas (MPAs) and establishment of Scallop enhancement sites in the Northern Ireland inshore region



Consultation on

The development of fisheries management measures for Marine Protected Areas and establishment of Scallop enhancement sites in the Northern Ireland inshore region

November 2020

Sustainability at the heart of a living, working, active landscape valued by everyone.



Coming up 2021

- Review of the Fisheries (NI) Act, 1966 - Bill team established – David Steele. Marine and Fisheries Division
- Consultation on Marine Strategy - Programme of Measures
- Review of Bathing Waters

In conclusion.....

- Work continues despite COVID restrictions
- Dundrum Bay work being used to influence wider Departmental policy on agri-environment policy moving forward
- Hugely busy space
 - Green Growth
 - Climate Change adaptation and mitigation
 - EU Transition
 - COVID response
- **CHALLENGE** - Managing water from source to sea moving forward to ensure we improve water quality, while mitigating and adapting to climate change