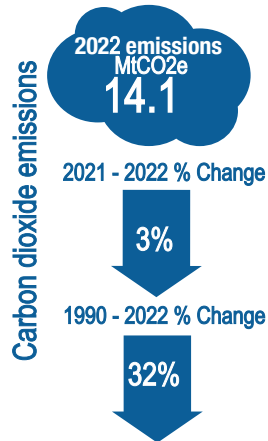
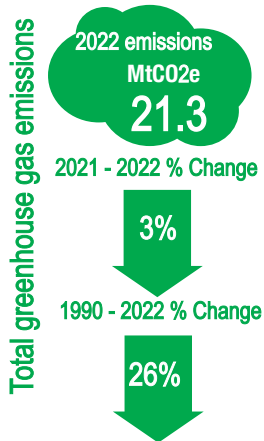
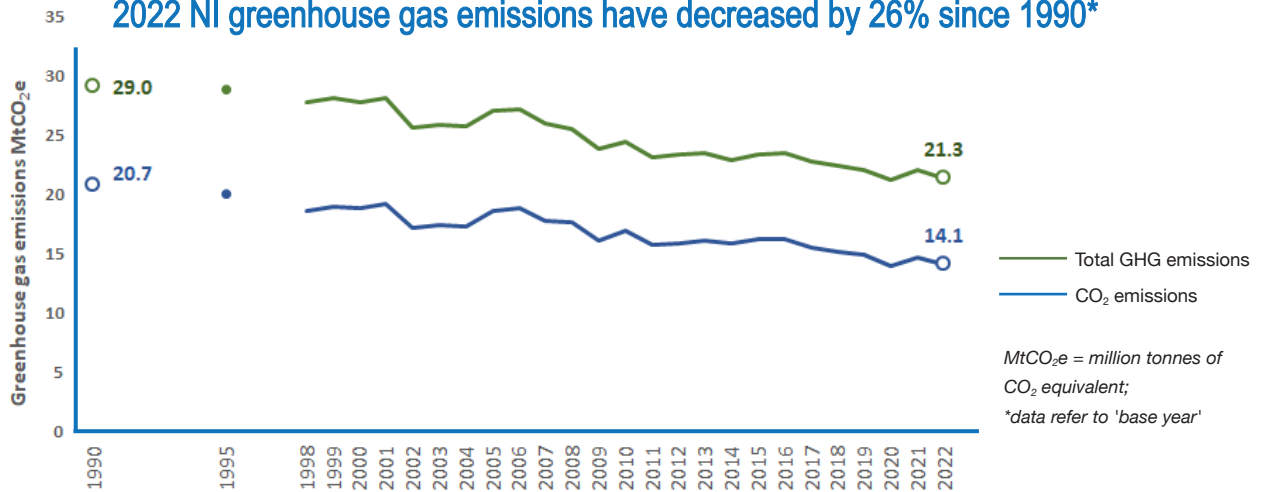
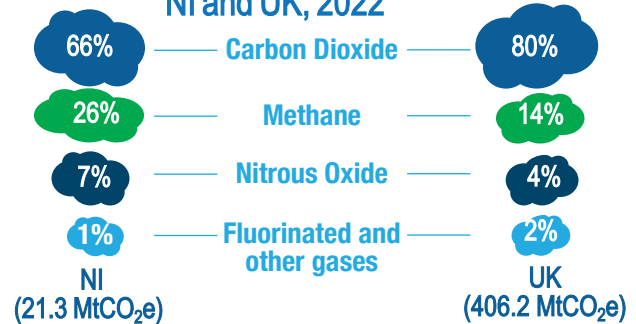


# NI Greenhouse Gas Statistics 1990-2022

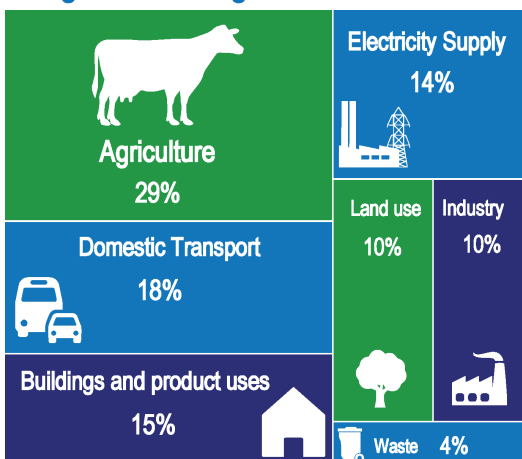
2022 NI greenhouse gas emissions have decreased by 26% since 1990\*



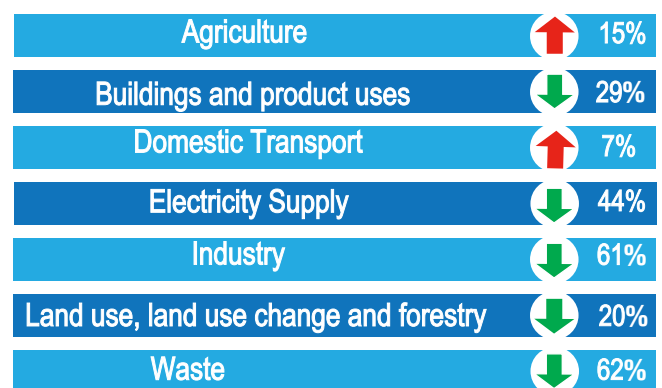
## Composition of greenhouse gas emissions (%), NI and UK, 2022



## Agriculture was the largest emitting sector of NI greenhouse gas emissions in 2022



## Industry delivered the largest reduction in emissions from 1990 to 2022 (-3.2 MtCO<sub>2</sub>e)



*Sustainability at the heart of a living, working, active landscape valued by everyone.*