

Water Status in Northern Ireland Targets and Measures

Wendy McKinley
NIEA Water Assessment, Data and Evidence

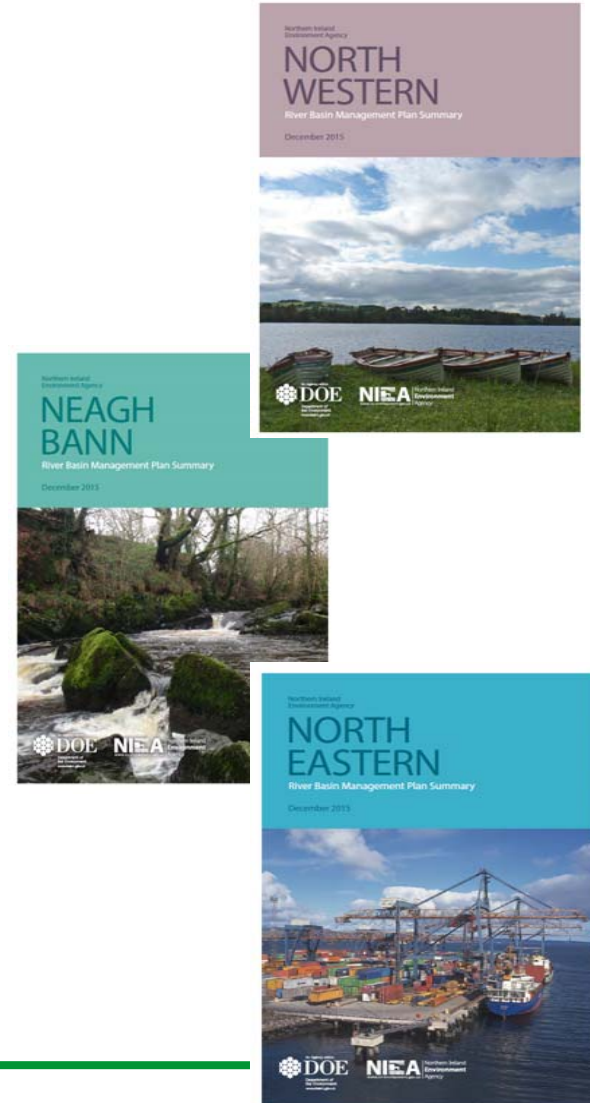
Content

- **Background**
- **Status and Targets for 2021**
- **Measures**



Background

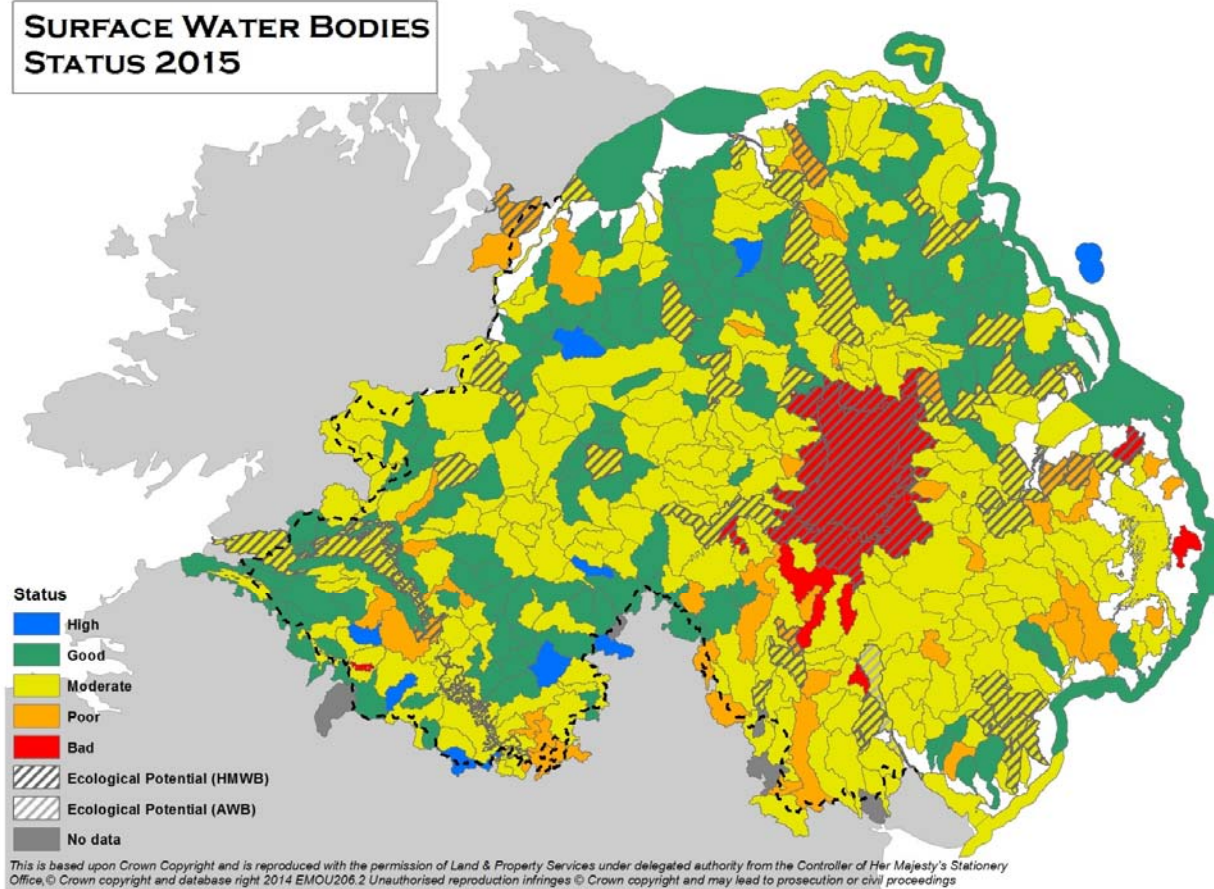
- **Second Cycle River Basin Management plans were published on 22 December 2015**
- **The plans set out current status, objectives, and national measures for 2015-2021**
- **Interim statistics on status will be published in Autumn 2018**
- **Progress report on measures to EC in December 2018**



Status and Targets

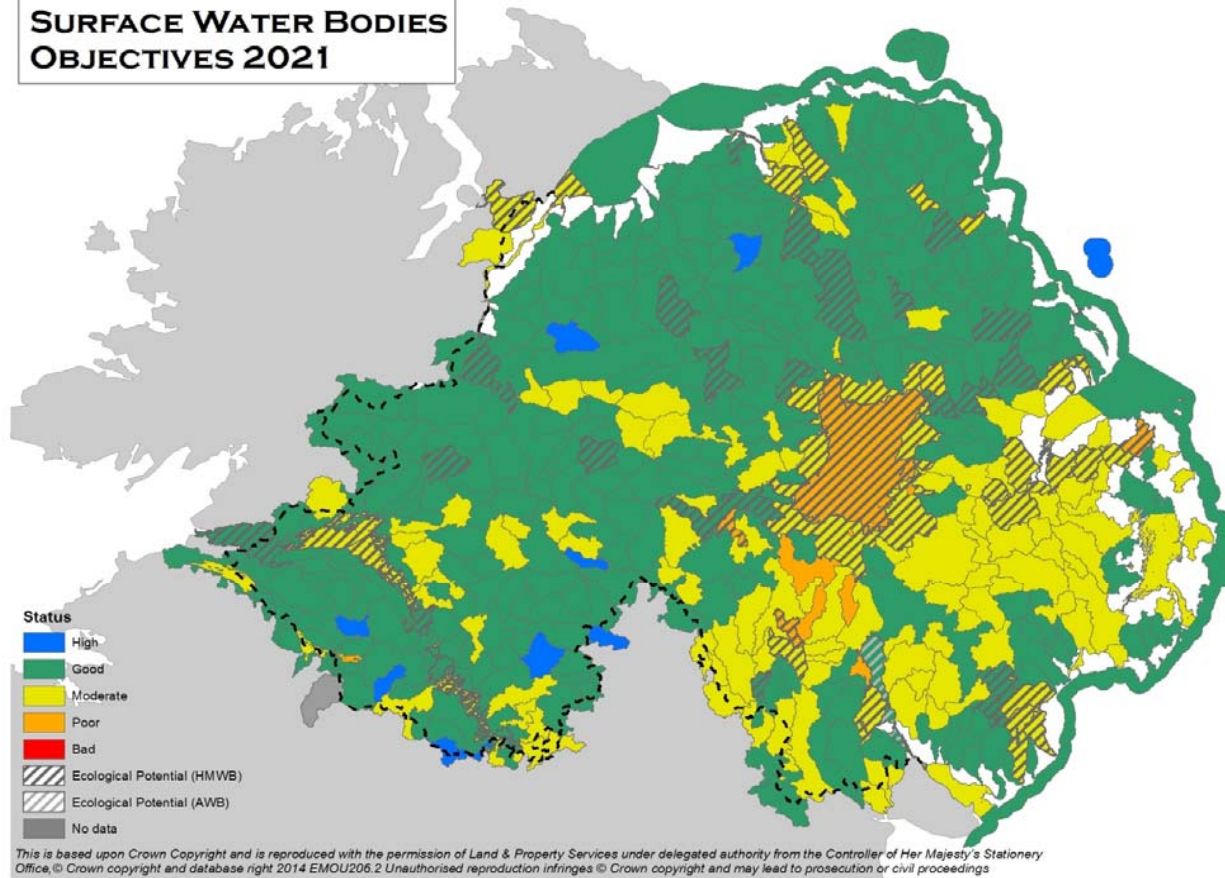
Surface Water Classification 2015

**SURFACE WATER BODIES
STATUS 2015**



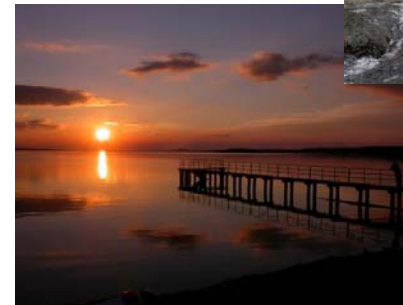
Surface Water Objectives 2021

SURFACE WATER BODIES OBJECTIVES 2021



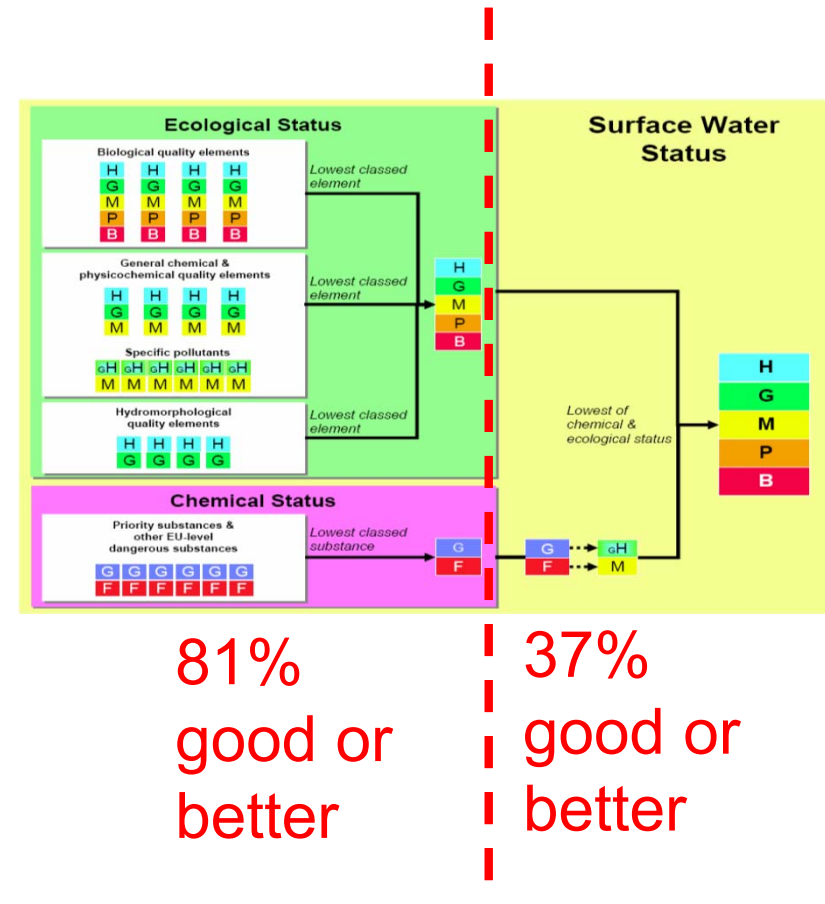
What do we monitor

- **40 different elements relating to water status**
- **Biological monitoring**
 - Plants, Diatoms, Phytoplankton
 - Invertebrates
 - Fish
- **Chemical monitoring programmes**
 - Nutrients, Oxygen Levels, Acidity, Metals, Pesticides, Flame Retardants, etc
- **Physical habitat assessments**
- **River flows and lake levels**



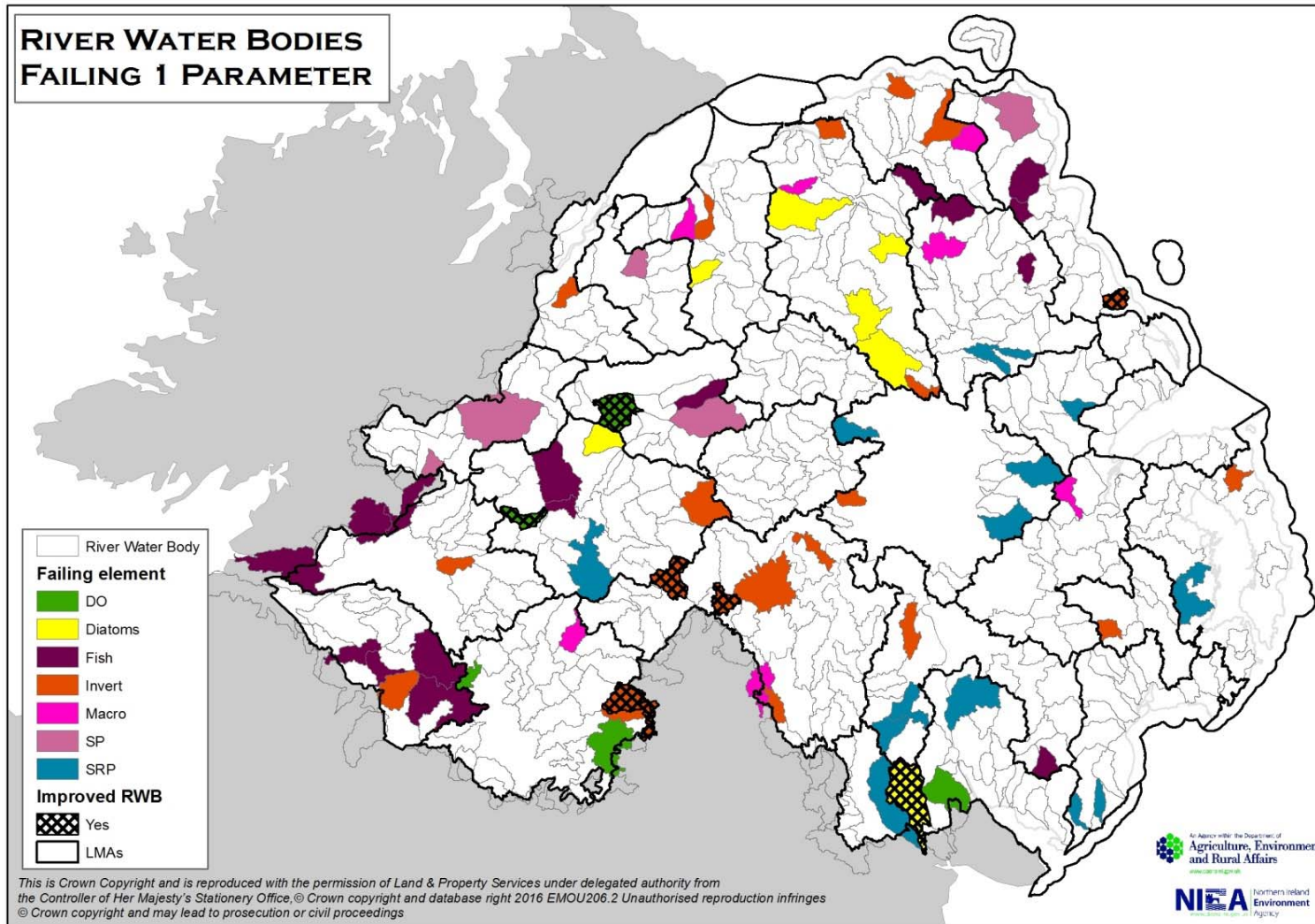
Factors Determining Progress

- ‘One out all out’ -Stringent assessment required by WFD masks improvements
- For individual assessments at element level (eg invertebrates, plants, phosphorus) over 81% are at good or better
- If one out of up to 40 assessments fails, then the water body fails



Examples of Single Element Failures

19% of all river water bodies fail on one assessment only



Measures

National Programme of Measures

- Provide the 'Tool box' of actions to choose from to tackle specific problems or to coordinate action at a catchment or national level
- May be legislative, statutory, or voluntary
- Lead by government, industry, partnerships or eNGOs
- 176 measures completed or ongoing from first cycle RBMPs will continue to deliver improvements in second cycle



Second Cycle Measures

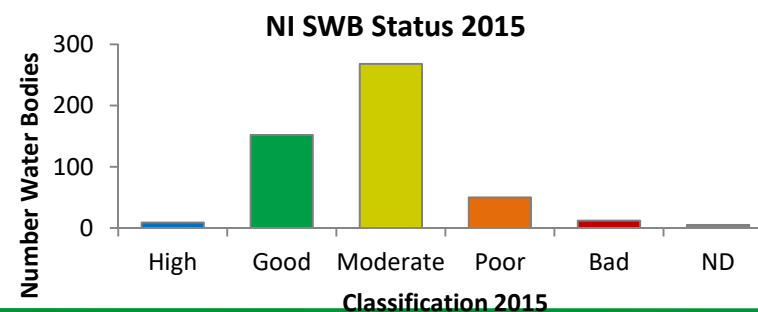
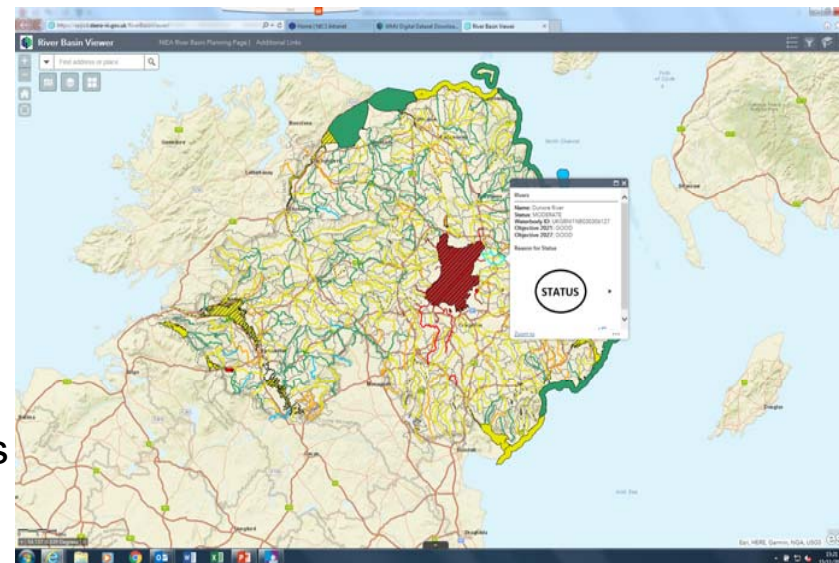
- **136 measures published in Second Cycle RBMPs**
 - **For example:**
 - Water protection measures within EFS schemes
 - Pilot catchment projects supported through Interreg
 - Catchment Care
 - Source to Tap
 - SWELL
 - Ongoing investment through NIW programmes
 - Programme of pilot river restoration projects including habitat and barriers
 - Prioritising actions to deal with misconnections
-

Evidence

- Interactive River Basin Map Viewer
- Water Datasets on Digital Downloads

- River Basin Districts
- Historical Landuse
- Industrial and Domestic Consents
- Surface Water Bodies
- Surface Water Bodies - Monitoring Sites
- Abstractions
- Marine
- Lakes
- Rivers
- Groundwater
- Local Management Areas

- Statistics Publications



Thank you